

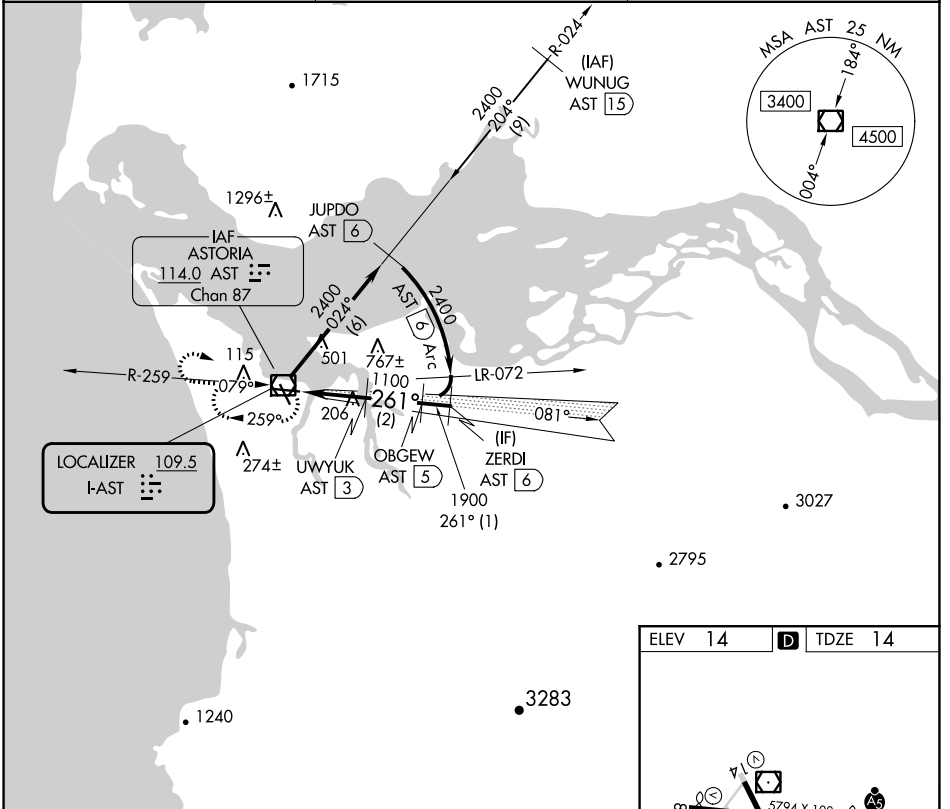
LOC I-AST 109.5	APP CRS 261°	Rwy ldg TDZE Elev	4780 14 14
---------------------------	------------------------	-------------------------	---------------------------------------

COPTER LOC RWY 26

ASTORIA RGNL (AST)

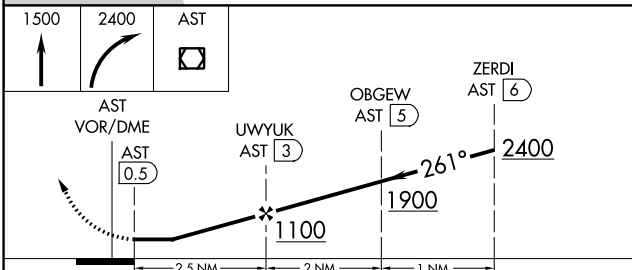
DME required.		MALSR	MISSED APPROACH: Climb to 1500 then climbing right turn to 2400 direct AST VOR/DME and hold.
<p>▼ DME from AST VOR/DME. Simultaneous reception of I-AST and AST DME required. For inop ALS increase visibility to 1 SM.</p>			

ASOS 135.375	SEATTLE CENTER 124.2 317.6	UNICOM 122.8 (CTAF) 0
------------------------	--------------------------------------	---------------------------------



NW-1, 13 JUN 2024 to 11 JUL 2024

NW-1, 13 JUN 2024 to 11 JUL 2024



ELEV 14	D	TDZE 14
---------	---	---------

REIL Rwy 8 0
REIL Rwy 14
MIRL Rwy 8-26 and 14-32 0

CATEGORY	COPTER		
H-LOC 26	460-3/4	446 (500-3/4)	