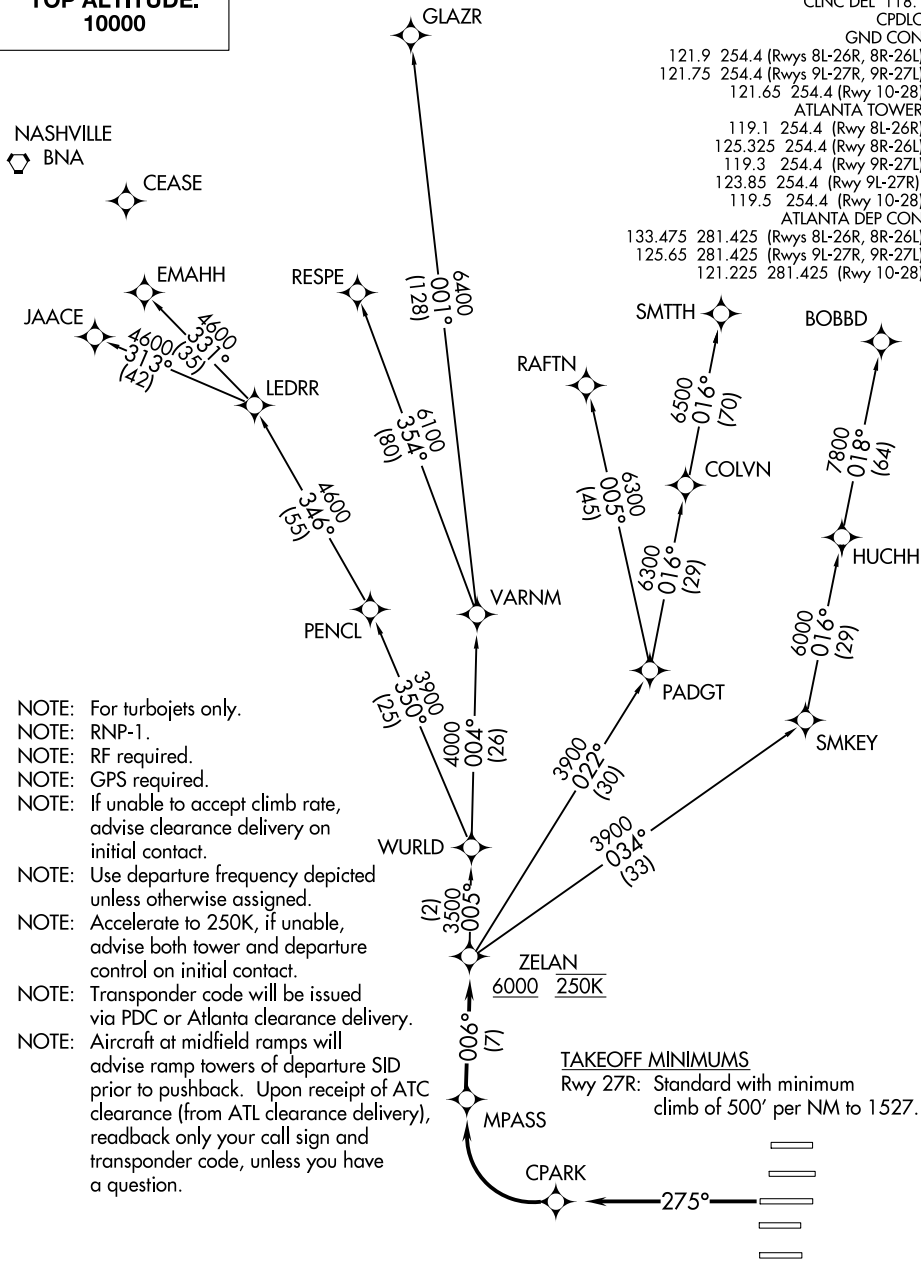


ZELAN FOUR DEPARTURE (RNAV)

**TOP ALTITUDE:
10000**

D-ATIS 125.55
 CLNC DEL 118.1
 CPDLC
 GND CON
 121.9 254.4 (Rwys 8L-26R, 8R-26L)
 121.75 254.4 (Rwys 9L-27R, 9R-27L)
 121.65 254.4 (Rwy 10-28)
 ATLANTA TOWER
 119.1 254.4 (Rwy 8L-26R)
 125.325 254.4 (Rwy 8R-26L)
 119.3 254.4 (Rwy 9R-27L)
 123.85 254.4 (Rwy 9L-27R)
 119.5 254.4 (Rwy 10-28)

ATLANTA DEP CON
 133.475 281.425 (Rwys 8L-26R, 8R-26L)
 125.65 281.425 (Rwys 9L-27R, 9R-27L)
 121.225 281.425 (Rwy 10-28)



- NOTE: For turbojets only.
- NOTE: RNP-1.
- NOTE: RF required.
- NOTE: GPS required.
- NOTE: If unable to accept climb rate, advise clearance delivery on initial contact.
- NOTE: Use departure frequency depicted unless otherwise assigned.
- NOTE: Accelerate to 250K, if unable, advise both tower and departure control on initial contact.
- NOTE: Transponder code will be issued via PDC or Atlanta clearance delivery.
- NOTE: Aircraft at midfield ramps will advise ramp towers of departure SID prior to pushback. Upon receipt of ATC clearance (from ATL clearance delivery), readback only your call sign and transponder code, unless you have a question.

TAKEOFF MINIMUMS
 Rwy 27R: Standard with minimum climb of 500' per NM to 1527.

(NARRATIVE ON FOLLOWING PAGE)

NOTE: Chart not to scale.

ZELAN FOUR DEPARTURE (RNAV)

SE-4, 13 JUN 2024 to 11 JUL 2024

SE-4, 13 JUN 2024 to 11 JUL 2024