

RNAV (GPS) RWY 30R

MEADOWS FLD (BFL)

WAAS CH 58118 W30A	APP CRS 301°	Rwy Idg TDZE 493 Apt Elev 510
--	------------------------	---

RNP APCH

⚠ For uncompensated Baro-VNAV systems, LNAV/VNAV NA below 0°C (32°F) or above 54°C (130°F). Circling NA northeast of Rwy 12L-30R. When local altimeter setting not received, use Porterville altimeter setting: increase LPV DA to 790, LNAV/VNAV DA to 990. Increase LNAV/VNAV all Cats visibilities to 1 1/4 mile; increase all MDA 100 feet and LNAV visibility Cats C and D to RVR 5000. VDP and Baro-VNAV NA when using Porterville altimeter setting. For inop ALS when using Porterville altimeter setting, increase LPV all Cats visibility to RVR 5000 and LNAV Cat C and D visibility to 1 3/8. # RVR 2400 when using Porterville altimeter setting.

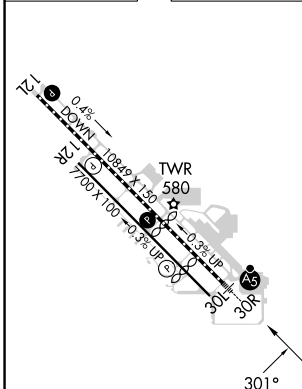


MISSED APPROACH:
Climb to 1000 then climbing right turn to 3000 direct STEBN and hold.

ATIS 118.6	BAKERSFIELD APP CON ★ 118.8 284.625 118.9 270.3 (SOUTH) (NORTH)	BAKERSFIELD TOWER ★ 118.1 (CTAF) 0 257.8	GND CON 121.7	UNICOM 122.95
----------------------	--	--	-------------------------	-------------------------



ELEV 510	D	TDZE 493
-----------------	----------	-----------------



TDZ/CL Rwy 30R
HIRL Rwy 12L-30R
MIRL Rwy 12R-30L
REIL Rwy 12R and 30L

1000	3000	STEBN	FASTO
↑	↪	✧	✧
*LNAV only		HOYMI 2.1 NM to RWY 30R	FASTO 3500
*1.1 NM to RWY 30R		JUPEX 2500	301° 3500
RWY 30R		1200*	2500
-1.1 NM		-1 NM	-4.1 NM
-7.3 NM		GP 3.00° TCH 51	
CATEGORY	A	B	C
LPV DA#	698/18 205 (200-1/2)		
LNAV/VNAV DA	898/45 405 (400-3/4)		
LNAV MDA	880/24	387 (400-1/2)	880/35 387 (400-3/4)
CIRCLING	960-1	450 (500-1)	960-1 1/2 1060-2 450 (500-1 1/2) 550 (600-2)

SW-3, 13 JUN 2024 to 11 JUL 2024

SW-3, 13 JUN 2024 to 11 JUL 2024