

SLAPP TWO DEPARTURE (RNAV)

AL-67 (FAA)

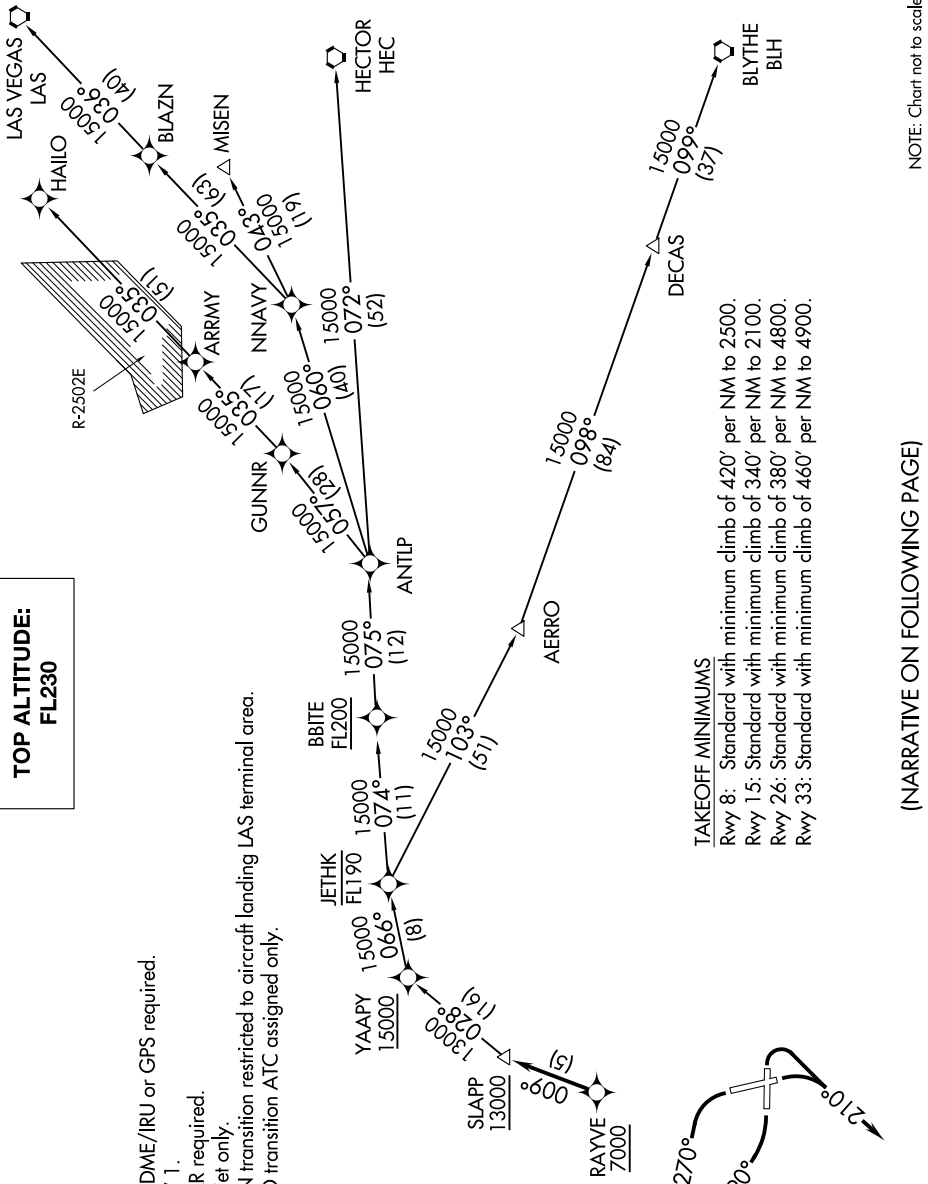
BOB HOPE (BUR)
BURBANK, CALIFORNIA

SW-3, 13 JUN 2024 to 11 JUL 2024

**TOP ALTITUDE:
FL230**

CINCDEL
118.0 348.6
CPDLC
SOCAL DEP CON
124.6 298.85

- NOTE: DME/DME/IRU or GPS required.
- NOTE: RNAV 1.
- NOTE: RADAR required.
- NOTE: Turbojet only.
- NOTE: MISEN transition restricted to aircraft landing LAS terminal area.
- NOTE: HAILO transition ATC assigned only.



TAKEOFF MINIMUMS
 Rwy 8: Standard with minimum climb of 420' per NM to 2500.
 Rwy 15: Standard with minimum climb of 340' per NM to 2100.
 Rwy 26: Standard with minimum climb of 380' per NM to 4800.
 Rwy 33: Standard with minimum climb of 460' per NM to 4900.

(NARRATIVE ON FOLLOWING PAGE)

NOTE: Chart not to scale.

SLAPP TWO DEPARTURE (RNAV)

(SLAPP2.SLAPP) 10SEP20

BURBANK, CALIFORNIA
BOB HOPE (BUR)