

WAAS CH 97432 W36A	APP CRS 356°	Rwy Idg TDZE 1954 Apt Elev 1954	5949
--	------------------------	---	-------------

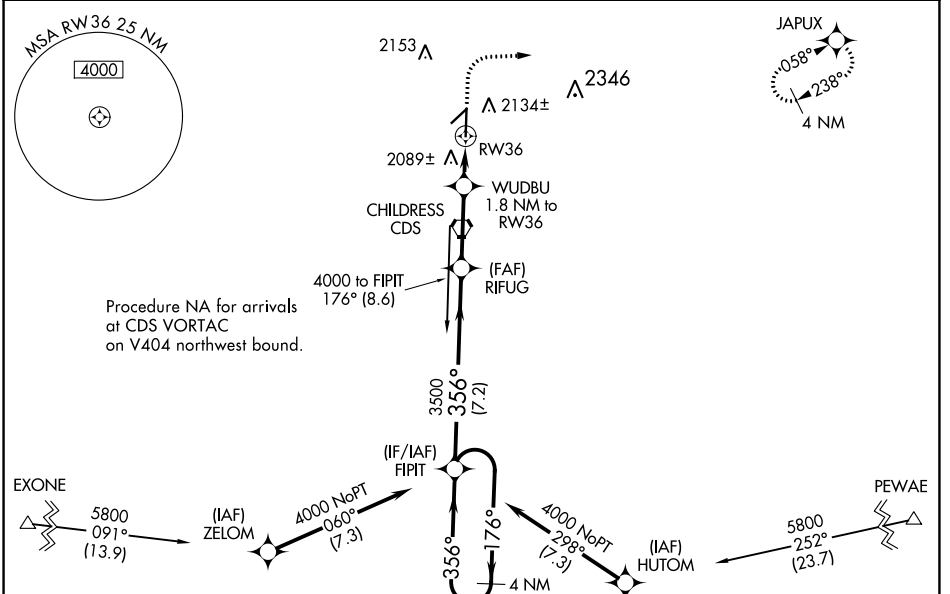
RNAV (GPS) RWY 36

CHILDRESS MUNI (CDS)

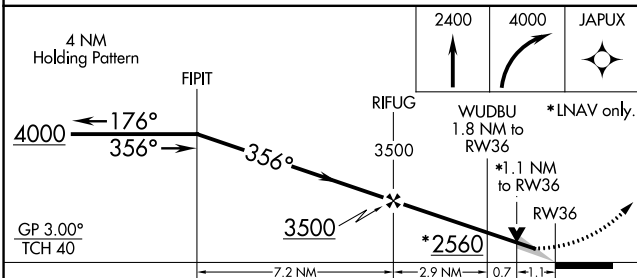
⚠ Circling to Rwy 4, 18, 22 NA at night. For uncompensated Baro-VNAV systems, LNAV/VNAV NA below -10°C (14°F) or above 54°C (130°F). DME/DME RNP-0.3 NA. When local altimeter setting not received, use Altus/Quartz Mountain Rgnl altimeter setting and increase all DA 188 feet, all MDA 200 feet and increase LPV all Cats visibility $\frac{3}{8}$ mile, LNAV/VNAV all Cats visibility $\frac{3}{4}$ mile, LNAV Cats C and D visibility $\frac{3}{8}$ mile, Circling Cat C visibility $\frac{3}{4}$ mile, and Circling Cat D visibility $\frac{1}{2}$ mile. Baro-VNAV and VDP NA with Altus/Quartz Mountain Rgnl altimeter setting.

MISSED APPROACH: Climb to 2400 then climbing right turn to 4000 direct JAPUX and hold.

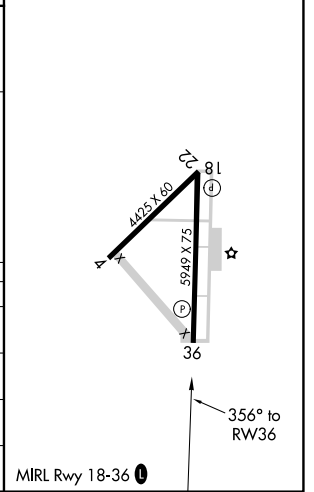
ASOS 135.125	FORT WORTH CENTER 133.5 350.35	UNICOM 122.8 (CTAF) 0
------------------------	--	---------------------------------



ELEV 1954	TDZE 1954
-----------	-----------



CATEGORY	A	B	C	D
LPV DA		2154- $\frac{3}{4}$	200 (200- $\frac{3}{4}$)	
LNAV/VNAV DA		2376-1 $\frac{1}{2}$	422 (500-1 $\frac{1}{2}$)	
LNAV MDA	2340-1	386 (400-1)	2340-1 $\frac{1}{8}$	386 (400-1 $\frac{1}{8}$)
CIRCLING	2500-1	546 (600-1)	2600-1 $\frac{3}{4}$ 646 (700-1 $\frac{3}{4}$)	2700-2 $\frac{1}{2}$ 746 (800-2 $\frac{1}{2}$)



SC-2, 13 JUN 2024 to 11 JUL 2024

SC-2, 13 JUN 2024 to 11 JUL 2024