

CLEVELAND, OHIO

AL-84 (FAA)

22139

LOC/DME I-PVY <b>111.55</b>	APP CRS <b>238°</b>	Rwy Idg TDZE <b>780</b> Apt Elev <b>799</b>
Chan <b>52(Y)</b>		

# ILS RWY 24R (CAT II & III)

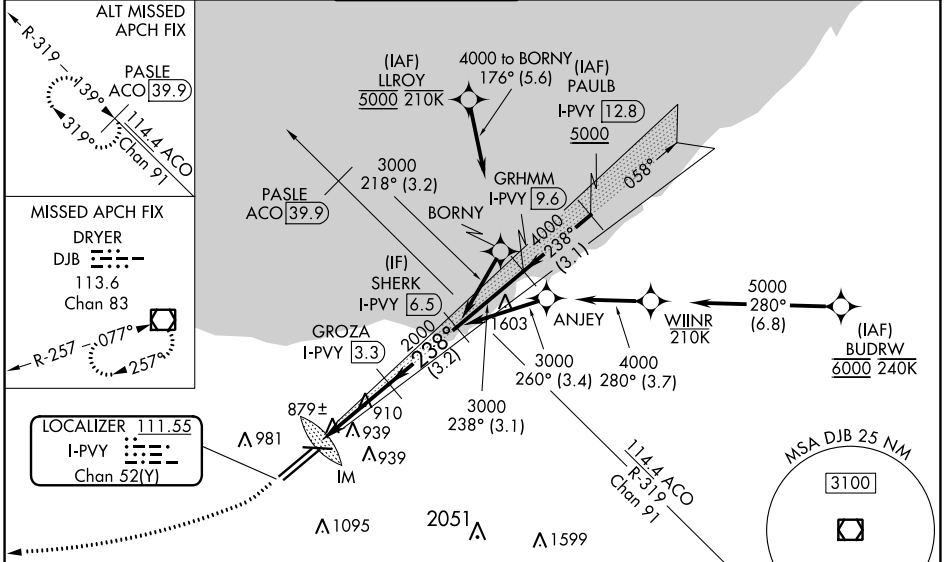
CLEVELAND-HOPKINS INTL (CLE)

DME required. Aircraft not DME/DME/IRU or GPS equipped - RADAR required for procedure entry. RNAV 1. From LLROY and BUDRW: RNAV 1-DME/DME/IRU or GPS required for procedure entry.

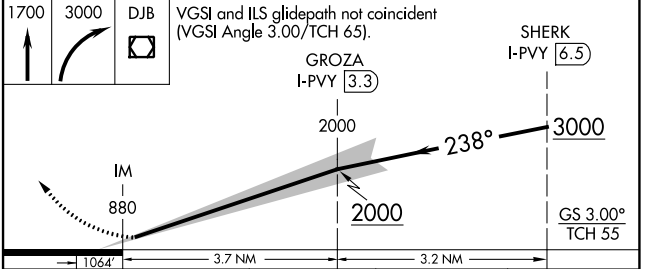
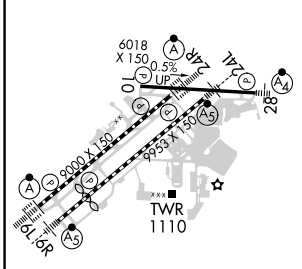
ALSF-2  
MISSED APPROACH: Climb to 1700 then climbing right turn to 3000 direct DJB VOR/DME and hold.

▼ CAT II: RVR 1000 authorized with specific OPSPEC, MSPEC, or LOA approval and use of autoland or HUD to touchdown. Simultaneous approach authorized. Simultaneous operations require use of vertical guidance; maintain last assigned altitude until established on glideslope.

D-ATIS ARR <b>127.85</b> DEP <b>132.375</b>	CLEVELAND APP CON <b>126.55 346.325</b>	CLEVELAND TOWER <b>124.5 273.45</b>	GND CON <b>121.7 273.45</b>	CINC DEL <b>125.05 273.45</b>	CPDLC
---	--	--	--------------------------------	----------------------------------	-------



ELEV <b>799</b>	<b>D</b>	TDZE <b>780</b>
-----------------	----------	-----------------



CATEGORY	A	B	C	D
S-ILS 24R	CAT II RA 100/12 100 DA 880			
S-ILS 24R	CAT III RVR 06			

**CATEGORY II & III ILS - SPECIAL AIRCREW & AIRCRAFT CERTIFICATION REQUIRED**

REIL Rwy 10  
TDZ/CL Rwy 6L, 6R, 24L and 24R  
HIRL Rwy 6L-24R, 6R-24L and 10-28

CLEVELAND, OHIO  
Amdt 7A 27JAN22

41°25'N-81°51'W

CLEVELAND-HOPKINS INTL (CLE)  
**ILS RWY 24R (CAT II & III)**

EC-2, 13 JUN 2024 to 11 JUL 2024

EC-2, 13 JUN 2024 to 11 JUL 2024