

LOC/DME I-LIZ	APP CRS	Rwy Idg	6L	6R
111.55	058°	TDZE	900	8029
Chan 52 (Y)		Apt Elev	773	777
			799	799

ILS or LOC RWY 6L

CLEVELAND-HOPKINS INTL (CLE)

From GROHL, HICKR, and KWENE: RNAV 1-DME/DME/IRU or GPS required for procedure entry. Aircraft not DME/DME/IRU or GPS equipped - RADAR required for procedure entry. RNAV 1.

Rwy 6L ALSF-2

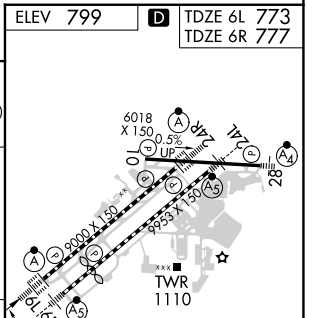
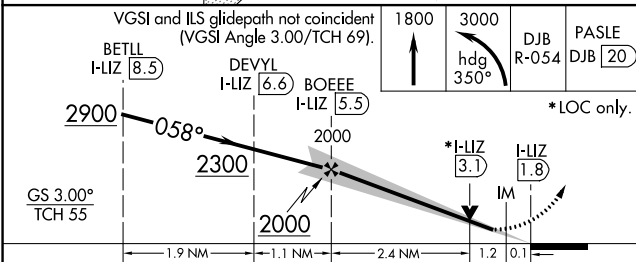
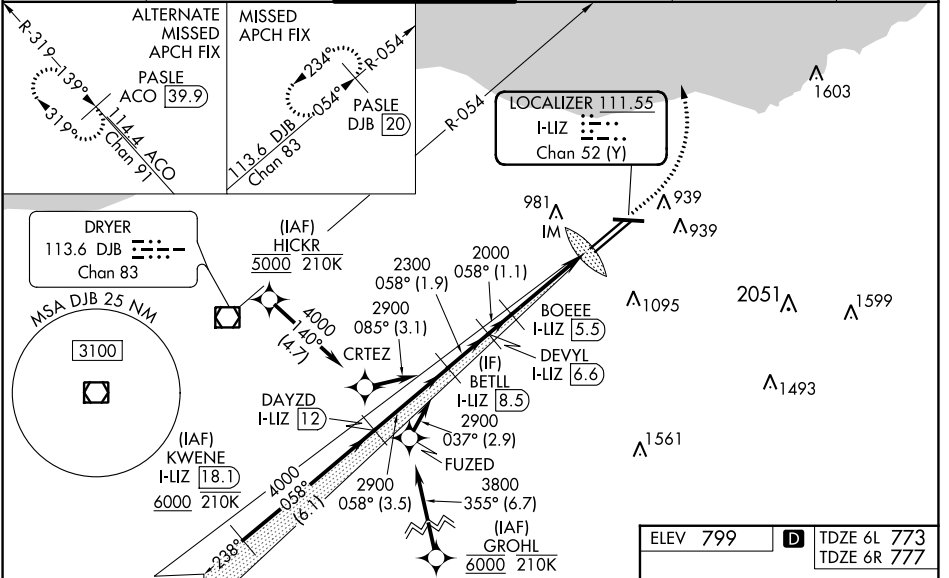
Rwy 6R MALSR

MISSED APPROACH: Climb to 1800 then climbing left turn to 3000 on heading 350° and DJB VOR/DME R-054 to PASLE/DJB 20 DME and hold.

DME required.

▼ Circling Rwy 10 NA at night. Simultaneous approach authorized. Simultaneous operations require use of vertical guidance; maintain last assigned altitude until established on glideslope. Inop table does not apply to Sidestep 6R. For inop ALS, increase S-LOC 6L Cats C/D visibility to 1 $\frac{3}{8}$ SM.

D-ATIS	CLEVELAND APP CON	CLEVELAND TOWER	GND CON	CLNC DEL	CPDLC
ARR 127.85	126.55 346.325	124.5 273.45	121.7 273.45	125.05 273.45	
DEP 132.375					



CATEGORY	A	B	C	D
S-ILS 6L	973/18		200 (200-1/2)	
S-LOC 6L	1260/24	487 (500-1/2)	1260/50	487 (500-1)
SIDESTEP 6R	1260/55	483 (500-1)	1260-1 1/2 483 (500-1 1/2)	1260-2 483 (500-2)
C CIRCLING	1420-1	621 (700-1)	1420-1 3/4 621 (700-1 3/4)	1420-2 621 (700-2)

ELEV 799 **D** TDZE 6L 773
TDZE 6R 777

058° 3.7 NM from FAF

REIL Rwy 10
TDZ/CL Rwy 6L, 6R, 24L, and 24R
HIRL Rwy 6L-24R, 6R-24L and 10-28

EC-2, 13 JUN 2024 to 11 JUL 2024

EC-2, 13 JUN 2024 to 11 JUL 2024