

CLEVELAND, OHIO

AL-84 (FAA)

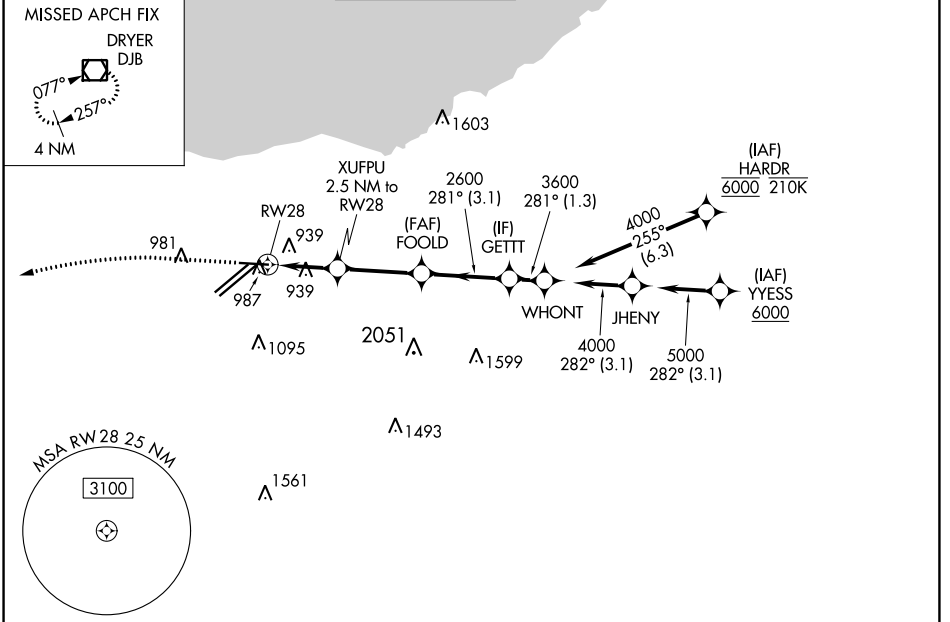
22139

| | | |
|--|------------------------|---|
| WAAS CH 40109 W28A | APP CRS 281° | Rwy Idg 6018 TDZE 799 Apt Elev 799 |
|--|------------------------|---|

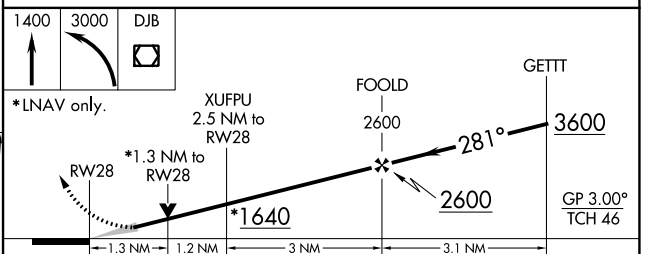
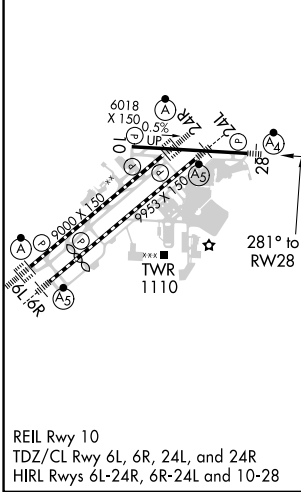
RNAV (GPS) RWY 28

CLEVELAND-HOPKINS INTL (CLE)

| | | | | | |
|---|---|---|--|---|--------------|
| RNP APCH. For uncompensated Baro-VNAV systems, LNAV/VNAV NA below -18°C (0°F) or above 54°C (130°F). Circling Rwy 10 NA at night. Inop table does not apply to LPV. | | MALSF | MISSED APPROACH: Climb to 1400 then climbing left turn to 3000 direct DJB VOR/DME and hold. | | |
| D-ATIS ARR 127.85 DEP 132.375 | CLEVELAND APP CON 126.55 346.325 | CLEVELAND TOWER 124.5 273.45 | GND CON 121.7 273.45 | CLNC DEL 125.05 273.45 | CPDLC |



| | | |
|----------|----------|----------|
| ELEV 799 | D | TDZE 799 |
|----------|----------|----------|



| CATEGORY | A | B | C | D |
|-------------------|---------|-------------|-------------------------|-----------------------|
| LPV DA | | 999/40 | 200 (200-¾) | |
| LNAV/VNAV DA | | 1168/40 | 369 (400-¾) | |
| LNAV MDA | 1260/40 | 461 (500-¾) | 1260/60 | 461 (500-1¼) |
| C CIRCLING | 1420-1 | 621 (700-1) | 1420-1¾ 621 (700-1¾) | 1420-2 621 (700-2) |

CLEVELAND, OHIO
Amdt 3 24MAY18

41°25'N-81°51'W

CLEVELAND-HOPKINS INTL (CLE) RNAV (GPS) RWY 28

EC-2, 13 JUN 2024 to 11 JUL 2024

EC-2, 13 JUN 2024 to 11 JUL 2024