

ZAAPA FIVE DEPARTURE (RNAV)

EC-2, 13 JUN 2024 to 11 JUL 2024

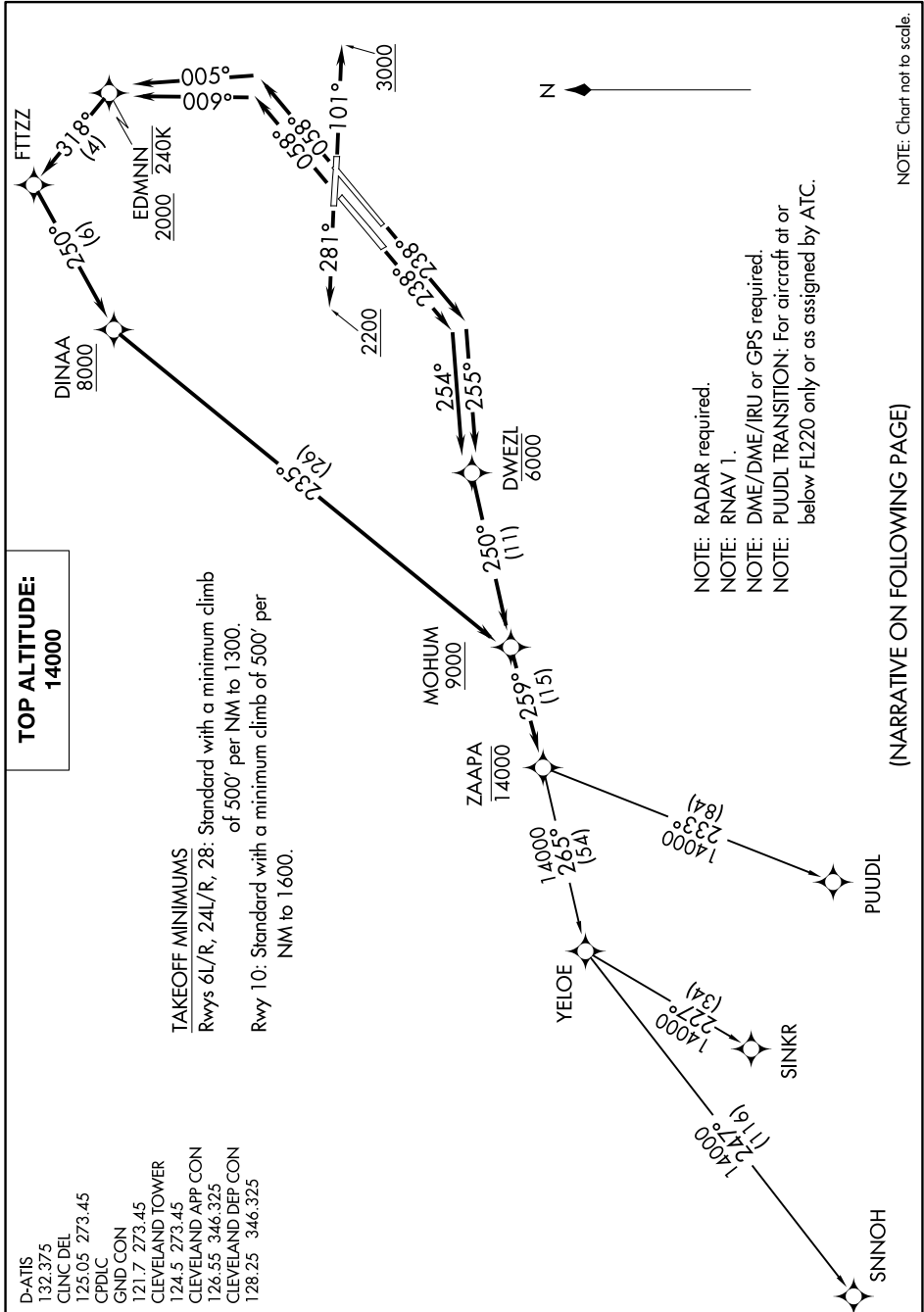
**TOP ALTITUDE:
14000**

- D-ATIS 132.375
- CINC DEL 125.05 273.45
- CPDLC 125.05 273.45
- GND CON 121.7 273.45
- CLEVELAND TOWER 124.5 273.45
- CLEVELAND APP CON 126.55 346.325
- CLEVELAND DEP CON 128.25 346.325

TAKEOFF MINIMUMS

Rwys 6L/R, 24L/R, 28: Standard with a minimum climb of 500' per NM to 1300.

Rwy 10: Standard with a minimum climb of 500' per NM to 1600.



NOTE: Chart not to scale.

(NARRATIVE ON FOLLOWING PAGE)

EC-2, 13 JUN 2024 to 11 JUL 2024

ZAAPA FIVE DEPARTURE (RNAV)