

TACAN X RWY 31L

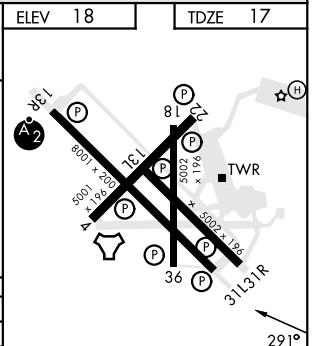
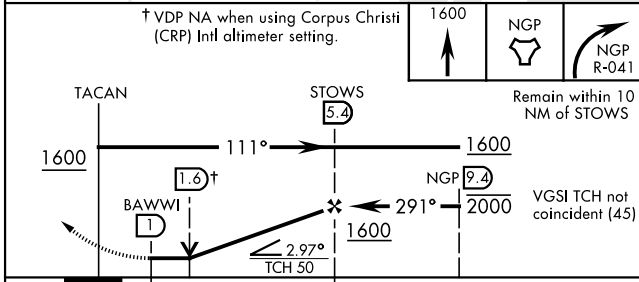
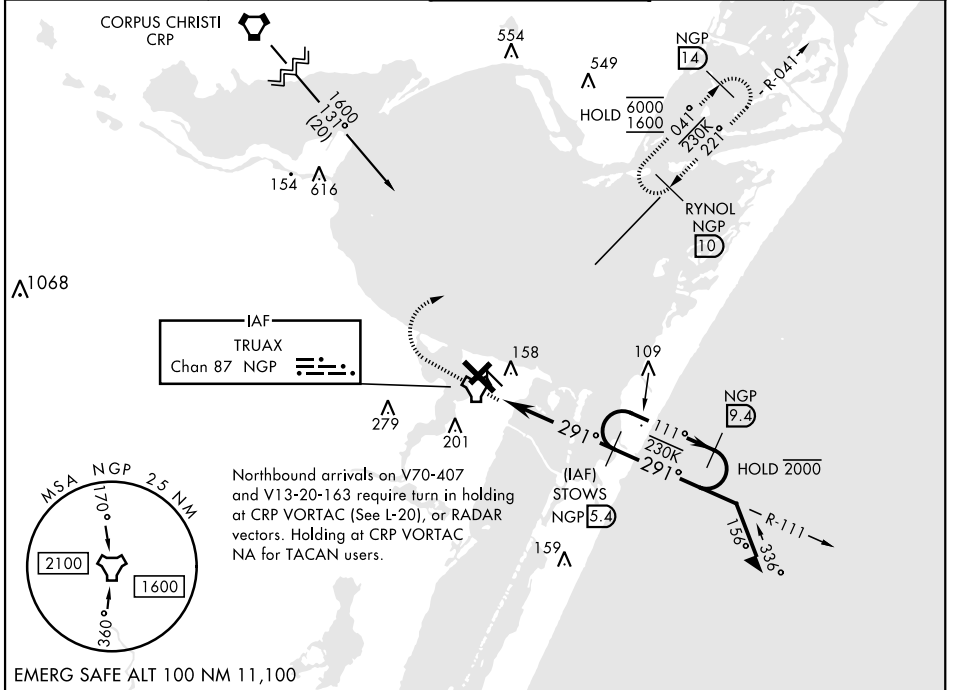
TACAN NGP Chan 87	APCH CRS 291°	Rwy Idg 8001 TDZE 17 Arpt Elev 18
--------------------------	----------------------	--

[USN]

CORPUS CHRISTI NAS (TRUAX FLD) (KNGP)

When local altimeter setting not received, use Corpus Christi (CRP) Intl altimeter setting. MISSED APPROACH: Climb to 1600 direct NGP TACAN and turn right to intercept R-041 to RYNOL and hold.

ATIS ★ 127.9 290.9	APP CON 128.675 343.75	NAVY CORPUS TOWER ★ 134.85 340.2	GND CON 118.7 257.85	CLNC DEL 314.3	ASR/PAR
------------------------------	----------------------------------	--	--------------------------------	--------------------------	---------



CATEGORY	A	B	C	D
S-31L	420-1 403 (500-1)	420-1½ 403 (500-1½)	420-1½ 403 (500-1½)	580-2
CIRCLING	460-1 442 (500-1)	480-1 462 (500-1)	520-1½ 502 (600-1½)	562 (600-2)
CORPUS CHRISTI (CRP) INTL ALTIMETER SETTING				
S-31L	460-1 443 (500-1)	460-1¾ 443 (500-1¾)	540-1½ 620-2	
CIRCLING	500-1 482 (500-1)	522 (600-1½)	602 (700-2)	

HIRL Rwy 4-22, 13R-31L	
HIRL Rwy 13L-31R, 18-36	
REIL Rwy 4-22, 13L-31R, 18-36, 31L	
FAF to MAP 4.4 NM	
Knots	60 90 120 150 180
Min:Sec	4:24 2:56 2:12 1:46 1:28

TACAN X RWY 31L

SC-3, 13 JUN 2024 to 11 JUL 2024

SC-3, 13 JUN 2024 to 11 JUL 2024