

DAYTON, OHIO

RNAV (GPS) RWY 23R

23278

APCH CRS 233°	Rwy Idg TDZE Arprt Elev	12,600 823 823
-------------------------	-------------------------------	---

AL-108 (USAF)

WRIGHT PATTERSON AFB (KFFO)

⚠ * When ALS inop, increase CAT AB RVR to 55, vis to 1 mile; CAT CD vis to 1 3/8 miles.
 ** When Rwy 23R VGSI inop, circling to Rwy 23R NA at night.

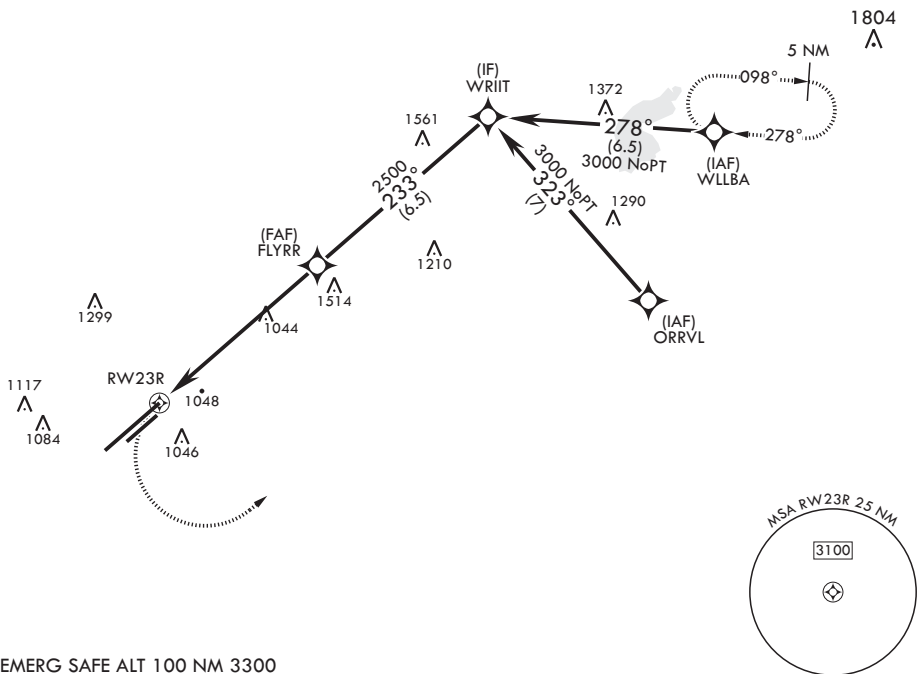


MISSED APPROACH: Turn left climb to 3000 direct WLLBA waypoint and hold.

ATIS 124.475 269.9	COLUMBUS APP CON/DEP CON 118.85 269.275	PATTERSON TOWER 126.9 281.45	GND CON 121.8 335.8
------------------------------	---	--	-------------------------------

DME/DME RNP-0.3 NA

1323



EMERG SAFE ALT 100 NM 3300

3000	WLLBA	VGSI and descent angles not coincident. (VGSI angle 3.00 TCH 53)	WRIIT	ELEV 823	TDZE 823
				3000	
	1.4 NM to RWY 23R	FLYRR	2500		
		$\leq 2.55^\circ$			
	6 NM				
CATEGORY	A	B	C	D	
LNAV MDA*	1320/24	497 (500-1/2)	1320/50	497 (500-1)	
C CIRCLING**	1380-1 557 (600-1)	1440-1 617 (700-1)	1560-2 737 (800-2)	1620-2 1/2 797 (800-2 1/2)	

HIRL Rwy 5L-23R
MIRL Rwy 5R-23L

DAYTON, OHIO

39°50'N - 84°03'W

WRIGHT PATTERSON AFB (KFFO)

Amdt 5 13OCT16

RNAV (GPS) RWY 23R

EC-2, 13 JUN 2024 to 11 JUL 2024

EC-2, 13 JUN 2024 to 11 JUL 2024