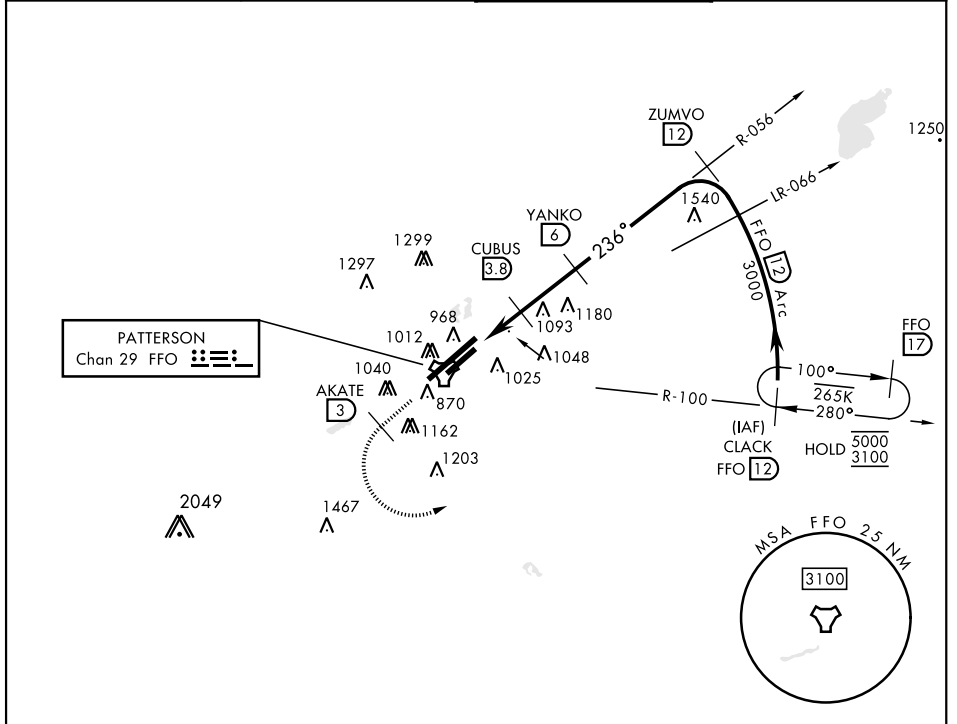


TACAN RWY 23L

TACAN FFO Chan 29	APCH CRS 236°	Rwy Idg TDZE Arprt Elev 7000 818 823	AL-108 [USAF]	WRIGHT-PATTERSON AFB (KFFO)
-----------------------------	-------------------------	--	---------------	-----------------------------

V * When Rwy 23R VGS1 inop, circling to Rwy 23R NA at night. MISSED APPROACH: Climb to 2000 via FFO R-233, at 3 DME turn left direct CLACK climbing to 3000 and hold.

ATIS 124.475 269.9	COLUMBUS APP CON 118.85 269.275	PATTERSON TOWER 126.9 281.45	GND CON 121.8 335.8
------------------------------	---	--	-------------------------------



EC-2, 13 JUN 2024 to 11 JUL 2024

EC-2, 13 JUN 2024 to 11 JUL 2024

EMERG SAFE ALT 100 NM 3700					ELEV 823	TDZE 818
2000 FFO R-233	AKATE FFO (3)	3000	CLACK R-100 FFO (12)	ZUMVO R-056		
CUBUS to RW23L 3.00° TCH 50		5000	3000	12 Arc	3000	
TACAN	FOVER (1.8)	(2.8)	CUBUS (3.8)	YANKO (6)	2200	
	0.5	2 NM	2.2 NM			
CATEGORY	A	B	C	D	E	
S-23L	1340-1 522 (600-1)	1340-1½ 522 (600-1½)	1340-1¾ 522 (500-1¾)			
CIRCLING*	1380-1 557 (600-1)	1400-1 577 (600-1)	1420-1½ 597 (600-1½)	1460-2 637 (700-2)	1620-2¾ 797 (800-2¾)	
					HRL Rwy 5L-23R	
					MIRL Rwy 5R-23L	

TACAN RWY 23L