

DAYTON, OHIO

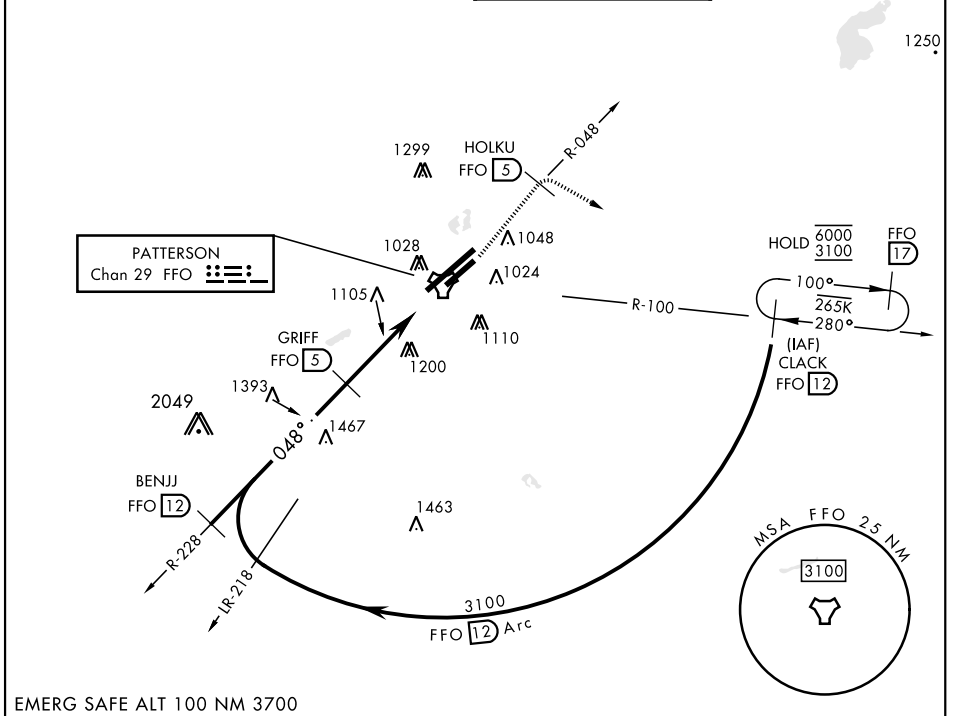
TACAN RWY 5R

TACAN FFO Chan 29	APCH CRS 048°	Rwy Ldg THRE Arprt Elev 7000 807 823	AL-108 [USAF]	WRIGHT-PATTERSON AFB (KFFO)
--------------------------	----------------------	---	---------------	-----------------------------

▼ * When Rwy 23R VGSi inop, circling to Rwy 23R NA at night.

MISSED APPROACH: Climb to 2000 via FFO R-048 to HOLKU, turn right direct CLACK climbing to 3100 and hold.

ATIS 124.475 269.9	COLUMBUS APP CON 118.85 269.275	PATTERSON TOWER 126.9 281.45	GND CON 121.8 335.8
------------------------------	---	--	-------------------------------



EC-2, 13 JUN 2024 to 11 JUL 2024

EC-2, 13 JUN 2024 to 11 JUL 2024

EMERG SAFE ALT 100 NM 3700

2000 FFO R-048	HOLKU FFO [5]	3100 CLACK FFO [12]	ELEV 823	THRE 807
----------------	---------------	---------------------	----------	----------

BENJJ R-228

CLACK R-100

3100

12 Arc

GRIFF [5]

TACAN

CUSAD [0.3]

GRIFF to RW5R 3.20° TCH 51

2600

048°

4.5 NM

0.6

CATEGORY	A	B	C	D	E
S-5R	1500-1	687 (700-1)	1500-2	687 (700-2)	
CIRCLING*	1500-1	677 (700-1)	1560-2 737 (800-2)	1620-2½ 797 (800-2½)	1620-2¾ 797 (800-2¾)

5R

51

TWR

977

980

12,600 x 300

7500 x 150

048°

DAYTON, OHIO
Amdt 5 05JAN17

39° 50'N-84° 03'W

WRIGHT-PATTERSON AFB (KFFO)

TACAN RWY 5R