

VOR/DME DLN <b>113.0</b> Chan 77	APP CRS <b>185°</b>	Rwy Idg TDZE N/A N/A	Apt Elev <b>5245</b>
--	------------------------	----------------------------	-------------------------

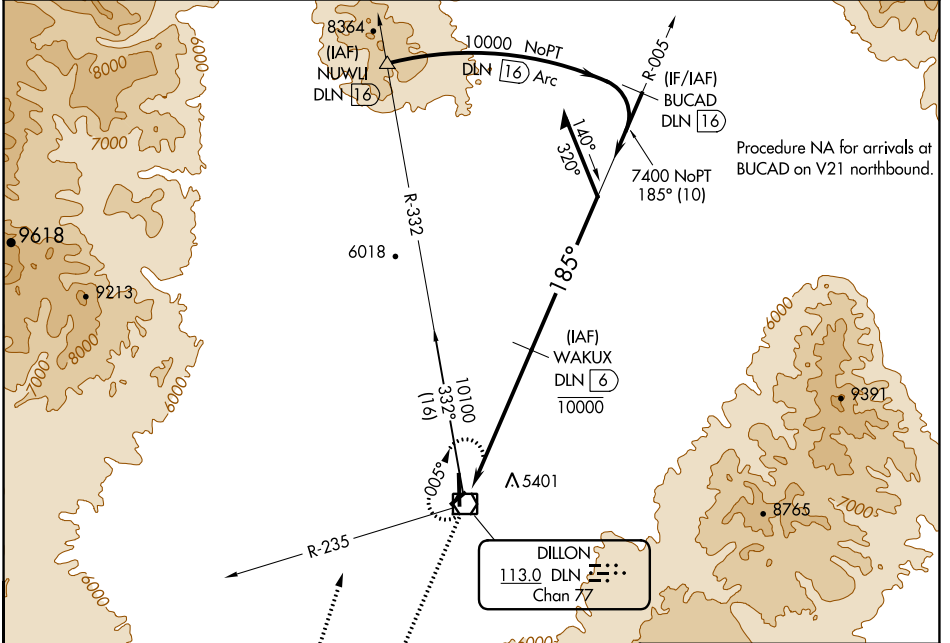
# VOR/DME-B

DILLON (DLN)

**⚠** When local altimeter setting not received, procedure NA. Night Landing: Rwy 4, 22, 35 NA. Helicopter visibility reduction below 1 SM not authorized.

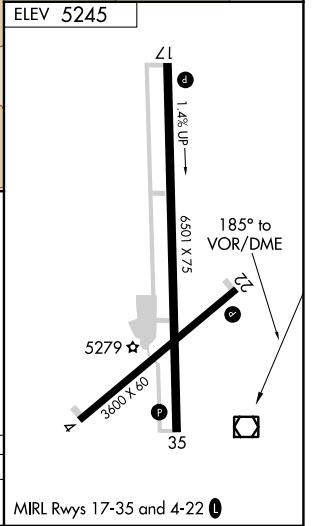
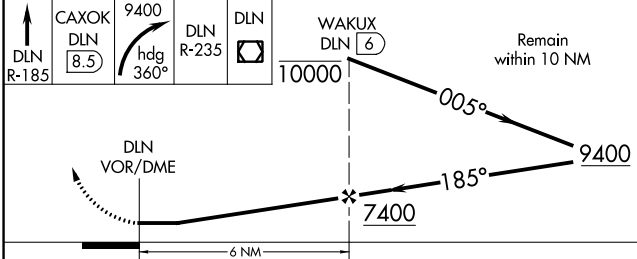
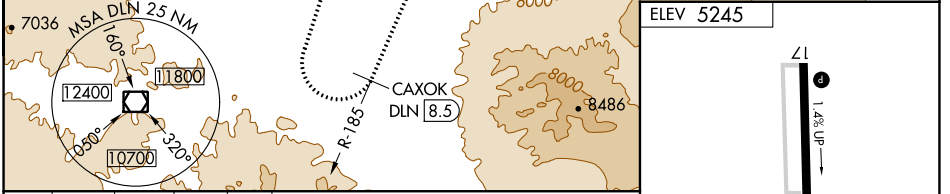
**⚠** MISSED APPROACH: Climb on DLN VOR/DME R-185 to CAXOK/8.5 DME then climbing right turn to 9400 on heading 360° and on DLN VOR/DME R-235 to DLN VOR/DME and hold.

ASOS <b>135.225</b>	SALT LAKE CENTER <b>132.4 338.3</b>	UNICOM <b>122.8 (CTAF) 0</b>
------------------------	--	---------------------------------



NW-1, 13 JUN 2024 to 11 JUL 2024

NW-1, 13 JUN 2024 to 11 JUL 2024



CATEGORY	A	B	C	D
CIRCLING	5800-1 555 (600-1)	5860-1 615 (700-1)	5980-2 735 (800-2)	6300-3 1055 (1100-3)

MIRL Rwy 17-35 and 4-22 0