

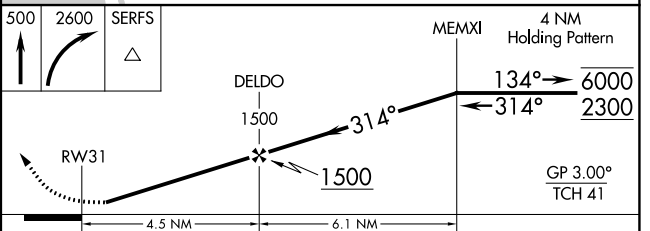
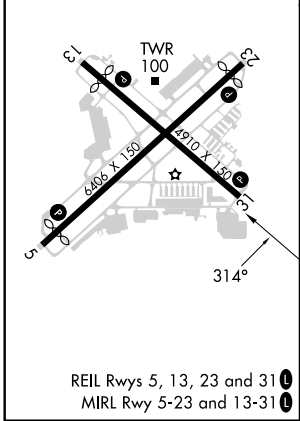
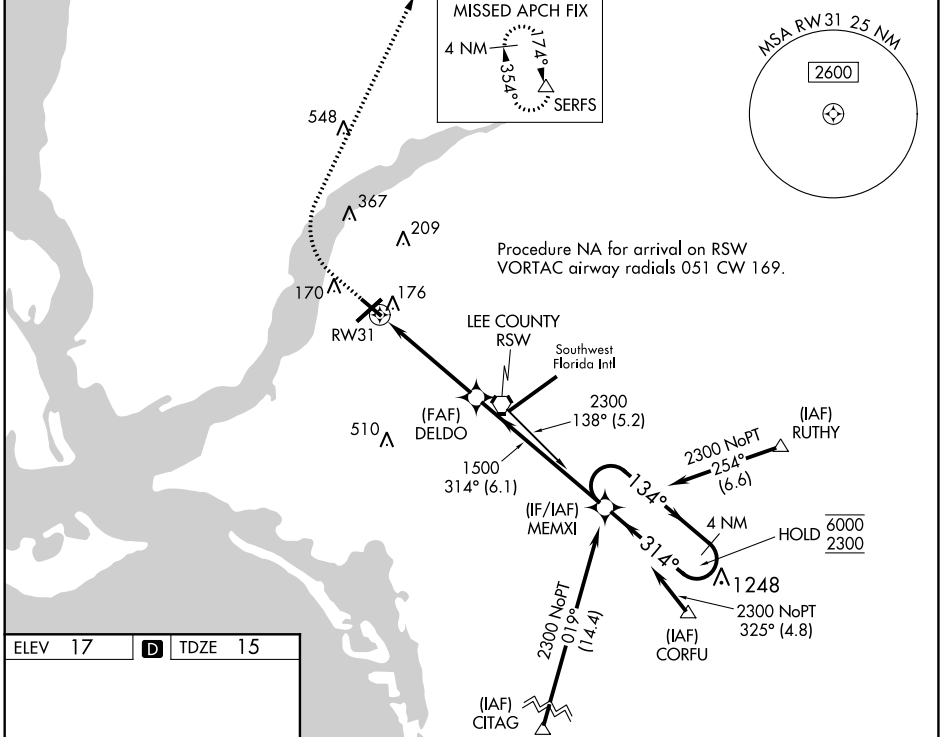
WAAS CH <b>50524</b> <b>W31A</b>	APP CRS <b>314°</b>	Rwy Idg <b>4667</b> TDZE <b>15</b> Apt Elev <b>17</b>
--	------------------------	---

# RNAV (GPS) RWY 31

PAGE FLD (FMY)

**RNP APCH.**  
 ▼ Rwy 31 helicopter visibility reduction below 1 SM NA. For uncompensated Baro-VNAV systems, LNAV/VNAV NA below 4°C or above 54°C. Straight-in Rwy 31 at night, Circling Rwy 31 at night, operational VGSI required, remain on or above VGSI glidepath until threshold.  
 MISSED APPROACH: Climb to 500 then climbing right turn to 2600 direct SERFS and hold.

ATIS <b>123.725</b>	FORT MYERS APP CON ★ <b>125.15 306.2</b> (Rwys 5, 13) <b>126.8 306.2</b> (Rwys 23, 31)	PAGE TOWER ★ <b>119.0</b> (CTAF) <b>306.95</b>	GND CON <b>121.7</b>	CLNC DEL <b>121.7</b>
------------------------	--	---	-------------------------	--------------------------



CATEGORY	A	B	C	D
LPV DA		265-1	250 (300-1)	
LNAV/VNAV DA		377-1	362 (400-1)	
LNAV MDA	480-1	465 (500-1)	480-1 <sup>3</sup> / <sub>8</sub>	465 (500-1 <sup>3</sup> / <sub>8</sub> )
<b>C</b> CIRCLING	540-1	523 (600-1)	600-1 <sup>1</sup> / <sub>2</sub> 583 (600-1 <sup>1</sup> / <sub>2</sub> )	680-2 663 (700-2)

SE-3, 13 JUN 2024 to 11 JUL 2024

SE-3, 13 JUN 2024 to 11 JUL 2024