

JOE POOL SEVEN DEPARTURE

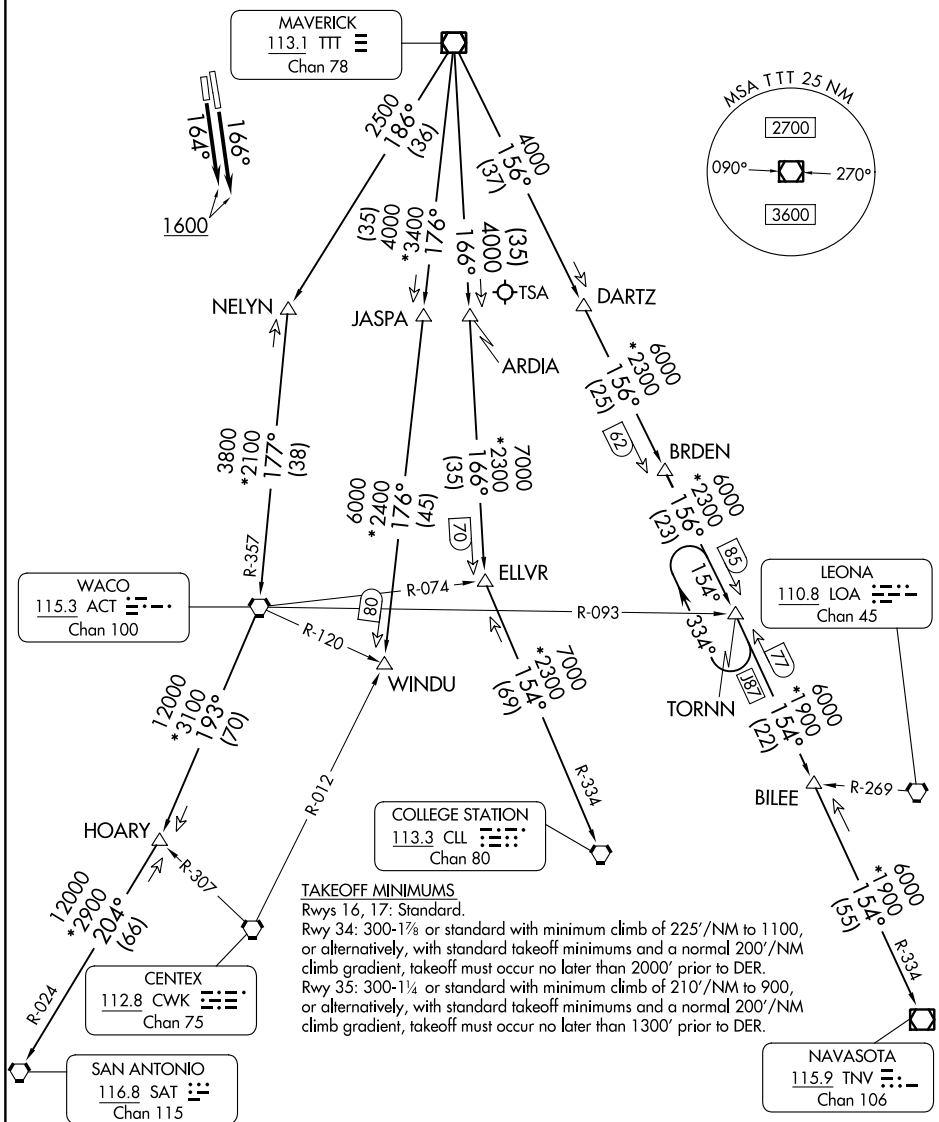
REGIONAL DEP CON
135.975 379.9
ATIS
120.7
CLNC DEL
124.65
GND CON
121.9
MEACHAM TOWER
118.3 257.8

RADAR and DME required.

**TOP ALTITUDE:
ASSIGNED BY ATC**

SC-2, 13 JUN 2024 to 11 JUL 2024

SC-2, 13 JUN 2024 to 11 JUL 2024



(CONTINUED ON FOLLOWING PAGE)

JOE POOL SEVEN DEPARTURE