

KINGDOM FOUR DEPARTURE

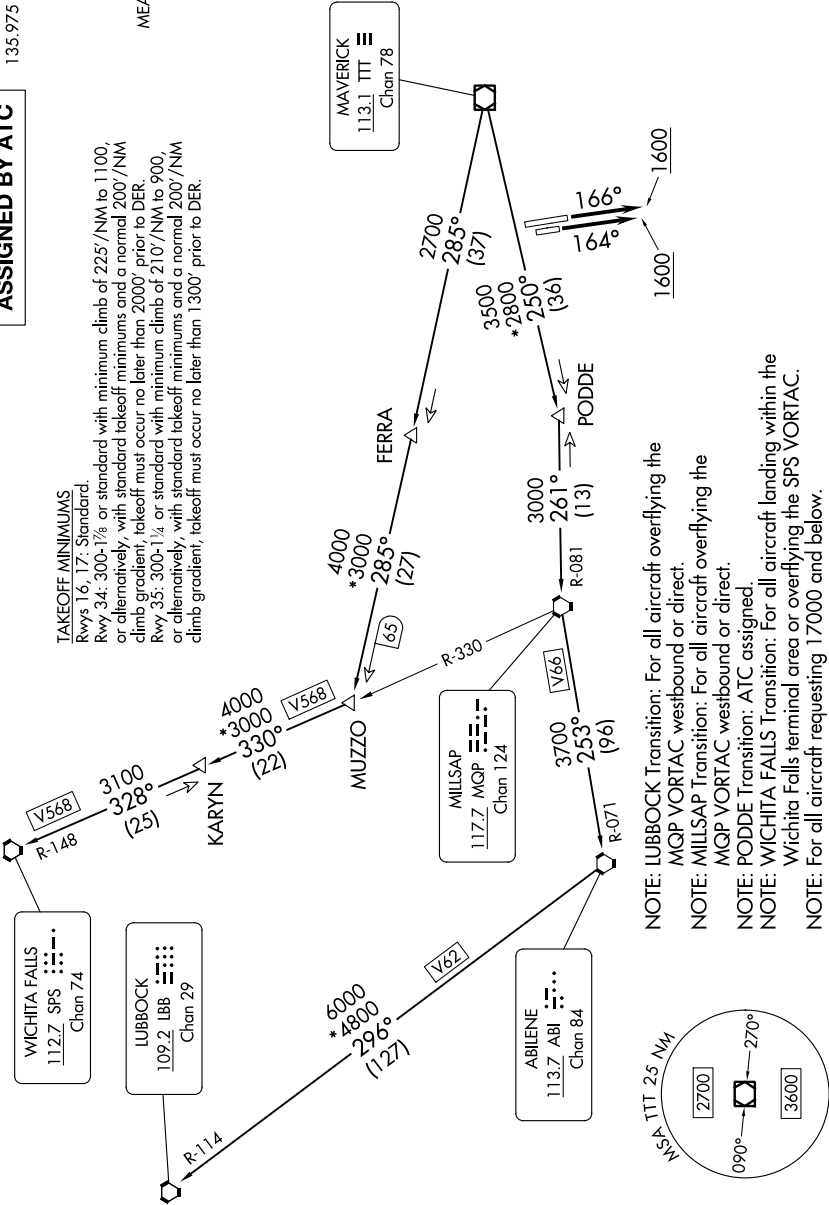
(CONTINUED ON FOLLOWING PAGE)

REGIONAL DEP CON
118.1 306.95 (NORTH)
135.975 379.9 (SOUTH)
ATIS
120.7
CLNC DEL
124.65
GND CON
121.9
MEACHAM TOWER
118.3 257.8

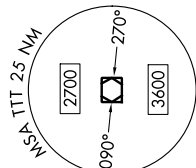
TOP ALTITUDE: ASSIGNED BY ATC

TAKEOFF MINIMUMS
Rwys 16, 17: Standard.
Rwy 34: 300-1/4 or standard with minimum climb of 225'/NM to 1100, or alternatively, with standard takeoff minimums and a normal 200'/NM climb gradient, takeoff must occur no later than 2000' prior to DER.
Rwy 35: 300-1/4 or standard with minimum climb of 210'/NM to 900, or alternatively, with standard takeoff minimums and a normal 200'/NM climb gradient, takeoff must occur no later than 1300' prior to DER.

RADAR and DME required.



- NOTE: LUBBOCK Transition: For all aircraft overlying the MQP VORTAC westbound or direct.
- NOTE: MILLSAP Transition: For all aircraft overlying the MQP VORTAC westbound or direct.
- NOTE: PODDE Transition: ATC assigned.
- NOTE: WICHITA FALLS Transition: For all aircraft landing within the Wichita Falls terminal area or overlying the SPS VORTAC.
- NOTE: For all aircraft requesting 17000 and below.



NOTE: Chart not to scale.

KINGDOM FOUR DEPARTURE