

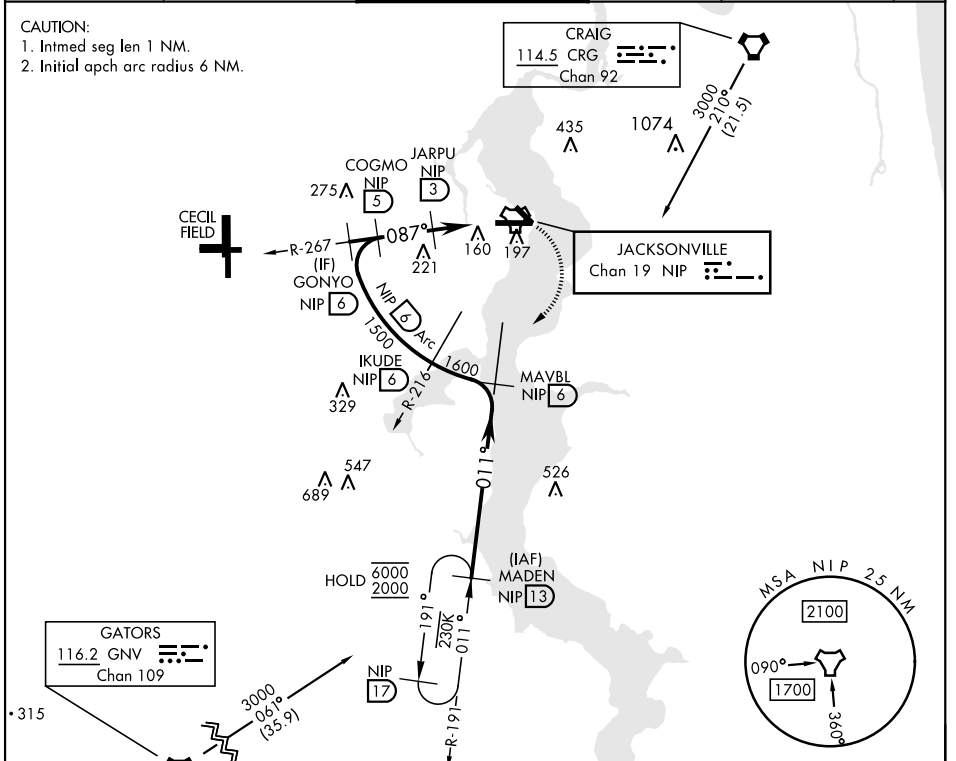
# TACAN Y RWY 10

TACAN NIP Chan 19	APCH CRS 087°	Rwy ldg TDZE 21 Arpt Elev 23	[USN]	JACKSONVILLE NAS (TOWERS FLD) (KNIP)
----------------------	------------------	------------------------------------	-------	--------------------------------------

\* When ALS inop, increase CAT AB vis to 1 mile, CAT CD vis to 1½ miles.
 

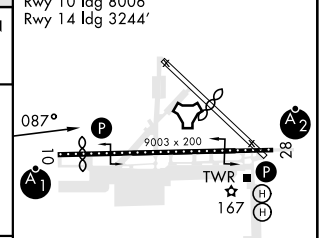
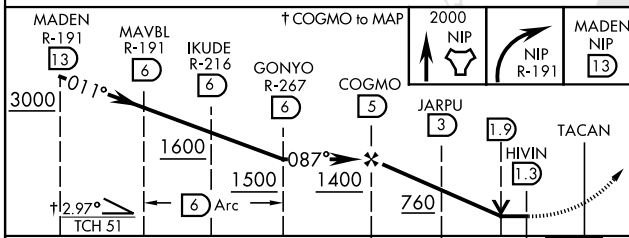
 ALSF-1  
 MISSED APPROACH: Climb to 2000 direct NIP TACAN and turn right outbound R-191 to MADEN and hold.

ATIS 124.35 290.425	APP CON 127.775 377.075	NAVY JACKSONVILLE TOWER 125.15 (CTAF) 340.2	GND CON 128.6 336.4	CLNC DEL 134.775 353.675	ASR/PAR
------------------------	----------------------------	--	------------------------	-----------------------------	---------



EMERG SAFE ALT 100 NM 2800

ELEV 23	TDZE 21
---------	---------



CATEGORY	A	B	C	D
S-10 *	420-½ 399 (400-½)		420-¾ 399 (400-¾)	
CIRCLING	500-1 477 (500-1)		560-1½ 537 (600-1½)	780-2½ 757 (800-2½)

HIRL Rwy 10-28

# TACAN Y RWY 10

SE-3, 13 JUN 2024 to 11 JUL 2024

SE-3, 13 JUN 2024 to 11 JUL 2024