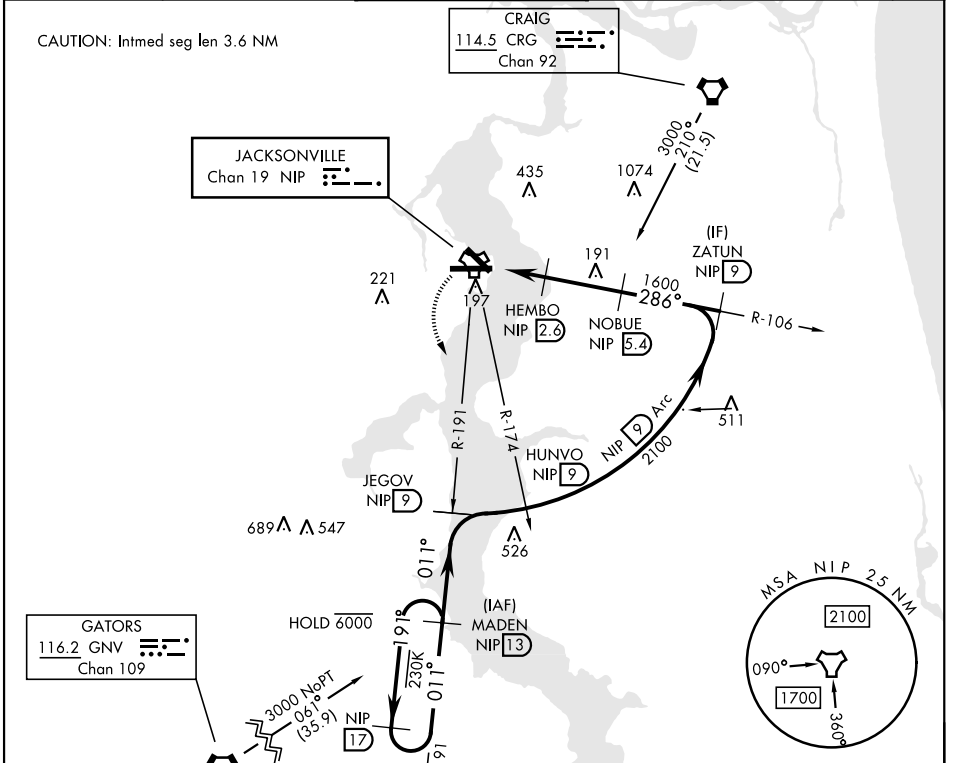


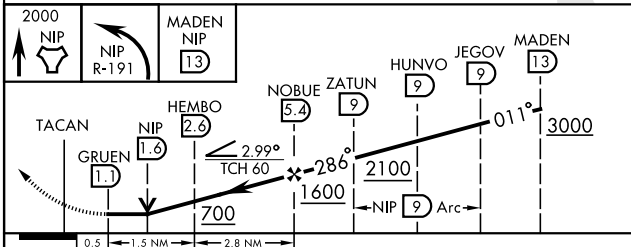
TACAN Y RWY 28

TACAN NIP Chan 19	APCH CRS 286°	Rwy Ldg TDZE 13 Arprt Elev 23	[USN]	JACKSONVILLE NAS (TOWERS FLD)	(KNIP)
▼ * When ALS inop, increase CAT AB vis to 1 mile, CAT CD vis to 1½ miles.			SALSF 	MISSED APPROACH: Climb to 2000 direct NIP TACAN and turn left outbound R-191 to MADEN and hold.	

ATIS 124.35 290.425	APP CON 127.775 377.075	NAVY JACKSONVILLE TOWER 125.15 (CTAF) 340.2	GND CON 128.6 336.4	CLNC DEL 134.775 0 353.675	ASR/ PAR
-------------------------------	-----------------------------------	--	-------------------------------	--------------------------------------	----------



• 249
EMERG SAFE ALT 100 NM 2800



ELEV 23	TDZE 13
Rwy 10 ldg 8006' Rwy 14 ldg 3244'	

CATEGORY	A	B	C	D
S-28*	400-¾ 387 (400-¾)		400-⅞ 387 (400-⅞)	
◻ CIRCLING	500-1 477 (500-1)		560-1½ 537 (600-1½)	780-2½ 757 (800-2½)

HIRL Rwy 10-28

TACAN Y RWY 28

SE-3, 13 JUN 2024 to 11 JUL 2024

SE-3, 13 JUN 2024 to 11 JUL 2024