

# ANAHEIM ONE DEPARTURE

AL-236 (FAA)

LONG BEACH (DAUGHERTY FLD) (LGB)

LONG BEACH, CALIFORNIA

SW-3, 13 JUN 2024 to 11 JUL 2024

## TOP ALTITUDE: ASSIGNED BY ATC

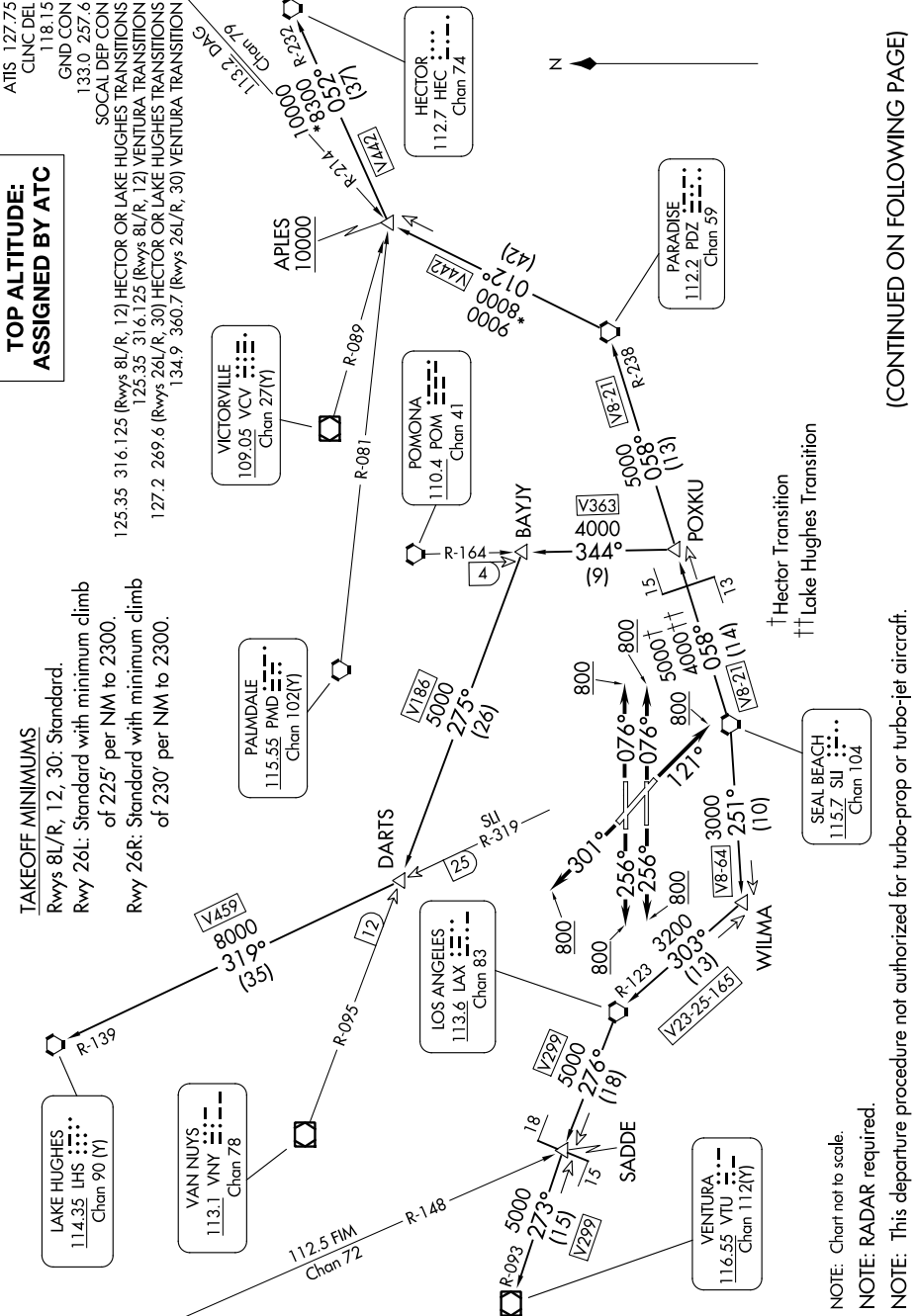
## TAKEOFF MINIMUMS

Rwys 8/L/R, 12, 30: Standard.

Rwy 26L: Standard with minimum climb of 225' per NM to 2300.

Rwy 26R: Standard with minimum climb of 230' per NM to 2300.

125.35 316.125 (Rwys 8/L/R, 12) HECTOR OR LAKE HUGHES TRANSITIONS  
125.35 316.125 (Rwys 8/L/R, 12) VENTURA TRANSITION  
127.2 269.6 (Rwys 26L/R, 30) HECTOR OR LAKE HUGHES TRANSITIONS  
134.9 360.7 (Rwys 26L/R, 30) VENTURA TRANSITION



(CONTINUED ON FOLLOWING PAGE)

NOTE: Chart not to scale.  
 NOTE: RADAR required.  
 NOTE: This departure procedure not authorized for turbo-prop or turbo-jet aircraft.

# ANAHEIM ONE DEPARTURE

LONG BEACH, CALIFORNIA

LONG BEACH (DAUGHERTY FLD) (LGB)

SW-3, 13 JUN 2024 to 11 JUL 2024