

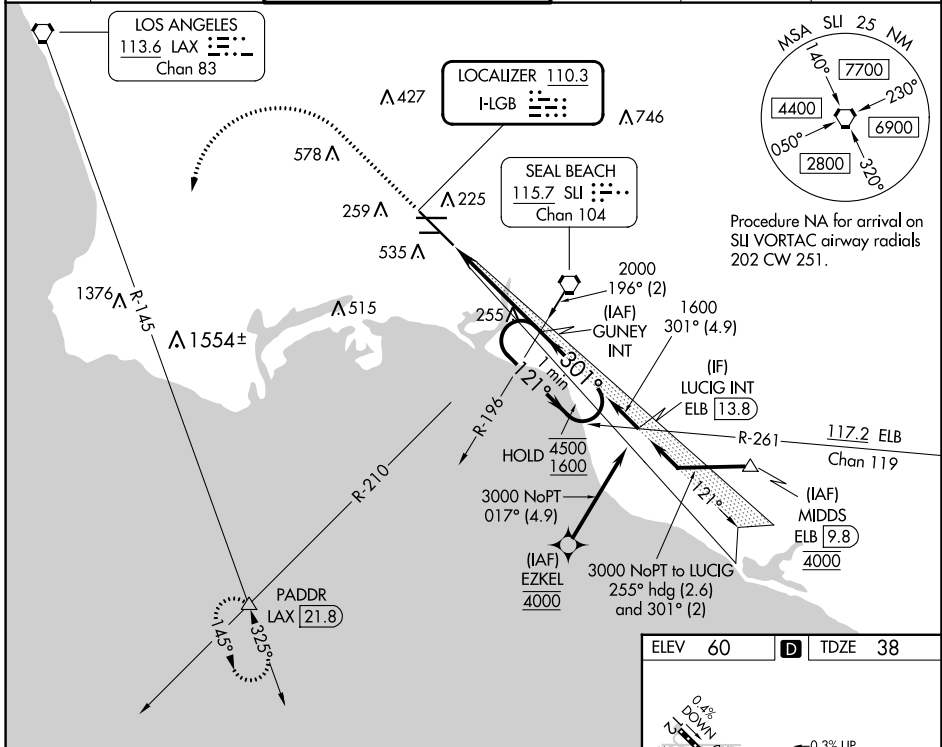
LOC I-LGB 110.3	APP CRS 301°	Rwy Idg TDZE Apt Elev	7414 38 60
---------------------------	------------------------	-----------------------------	---------------------------------------

ILS or LOC RWY 30

LONG BEACH (DAUGHERTY FLD) (LGB)

From EZKEL: RNAV 1-GPS required.	MALSR	MISSED APPROACH: Climb to 800 then climbing left turn to 3000 on heading 200° and LAX VORTAC R-145 to PADDR INT/LAX 21.8 DME and hold.
For inop ALS, increase S-LOC 30 Cats C/D visibility to 1¾ SM.	AS	

ATIS 127.75	SOCAL APP CON 125.35 316.125	LONG BEACH TOWER ★ 120.5 257.6 (Rwy 12) 119.4 (CTAF) 257.6 (Rwy 30)	GND CON 133.0 257.6	CLNC DEL 118.15	UNICOM 122.95
-----------------------	--	--	-------------------------------	---------------------------	-------------------------



SW-3, 13 JUN 2024 to 11 JUL 2024

SW-3, 13 JUN 2024 to 11 JUL 2024

800	3000	LAX R-145	PADDR	GUNEY INT	1600	One Minute Holding Pattern
<p>VGSI and ILS glidepath not coincident (VGSI Angle 3.00/TCH 64).</p>					121°	4500
					301°	1600
					1600	GS 3.00° TCH 58
4.7 NM						
CATEGORY	A	B	C	D		
S-ILS 30	258/18		220 (200-½)			
S-LOC 30	520/24	482 (500-½)		520/50	482 (500-1)	
CIRCLING	840-1	780 (800-1)		840-2¼	840-2½	
				780 (800-2¼)	780 (800-2½)	

ELEV 60	D	TDZE 38
TDZ/CL Rwy 30	HIRL Rwy 12-30	
HIRL Rwy 8R-26L	MIRL Rwy 8L-26R	
REIL Rwys 8R, 12, 26L, and 26R	FAF to MAP 4.7 NM	
Knots	60	90 120 150 180
Min:Sec	4:42	3:08 2:21 1:53 1:34