

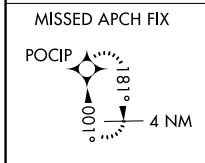
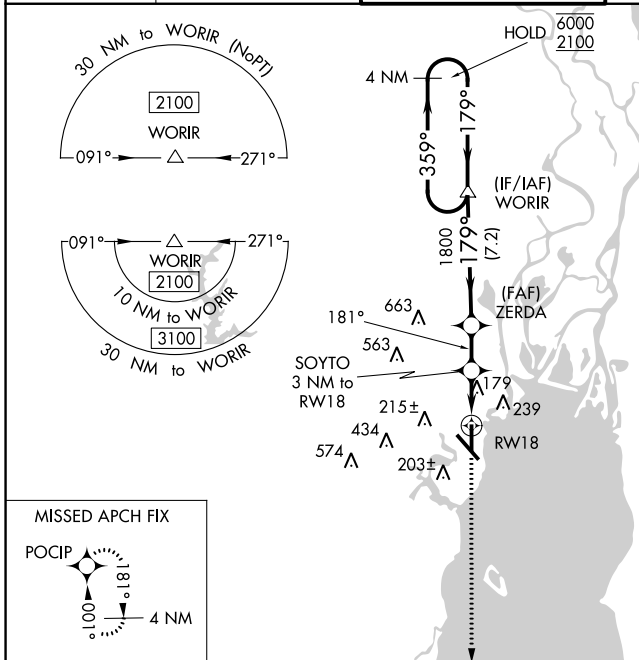
WAAS CH <b>97611</b> <b>W18A</b>	APP CRS <b>181°</b>	Rwy Idg <b>7800</b> TDZE <b>26</b> Apt Elev <b>26</b>
--	------------------------	---

# RNAV (GPS) RWY 18

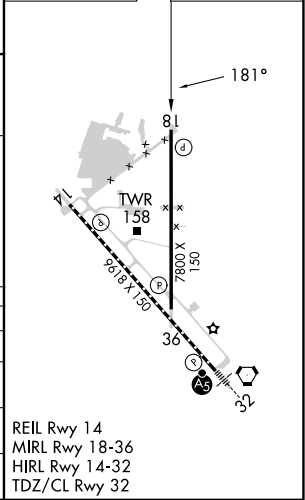
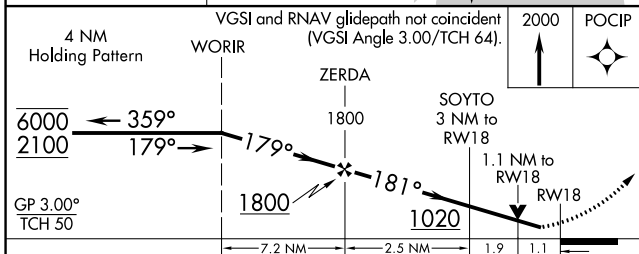
MOBILE INTL (BFM)

RNP APCH - GPS.		<p><b>⚠</b> Rwy 18 helicopter visibility reduction below 3/4 SM NA. For uncompensated Baro-VNAV systems, LNAV/VNAV NA below -2°C or above 54°C.</p>	<p>MISSED APPROACH: Climb to 2000 direct POCIP and hold.</p>

<p>ATIS <b>135.575</b></p>	<p>MOBILE APP CON * <b>118.5 269.3</b></p>	<p>INTERNATIONAL TOWER * <b>118.8 (CTAF) 0 251.1</b></p>	<p>GND CON <b>121.7 239.3</b></p>	<p>UNICOM <b>122.95</b></p>
--------------------------------	--	--	---------------------------------------	---------------------------------



ELEV 26	TDZE 26
---------	---------



CATEGORY	A	B	C	D
LPV DA		276-1	250 (300-1)	
LNAV/VNAV DA		419-1 1/8	393 (400-1 1/8)	
LNAV MDA	440-1	414 (500-1)	440-1 1/8	414 (500-1 1/8)
<b>C</b> CIRCLING	680-1	654 (700-1)	680-1 3/4	1100-3
			654 (700-1 3/4)	1074 (1100-3)

REIL Rwy 14  
MIRL Rwy 18-36  
HIRL Rwy 14-32  
TDZ/CL Rwy 32

SE-4, 13 JUN 2024 to 11 JUL 2024

SE-4, 13 JUN 2024 to 11 JUL 2024