

RNAV (GPS) RWY 10

WAAS Chan 44826 W10A	APCH CRS 100°	Rwy Idg 8071 TDZE 14 Arpt Elev 15
------------------------------------------	-------------------------	--------------------------------------------------------------

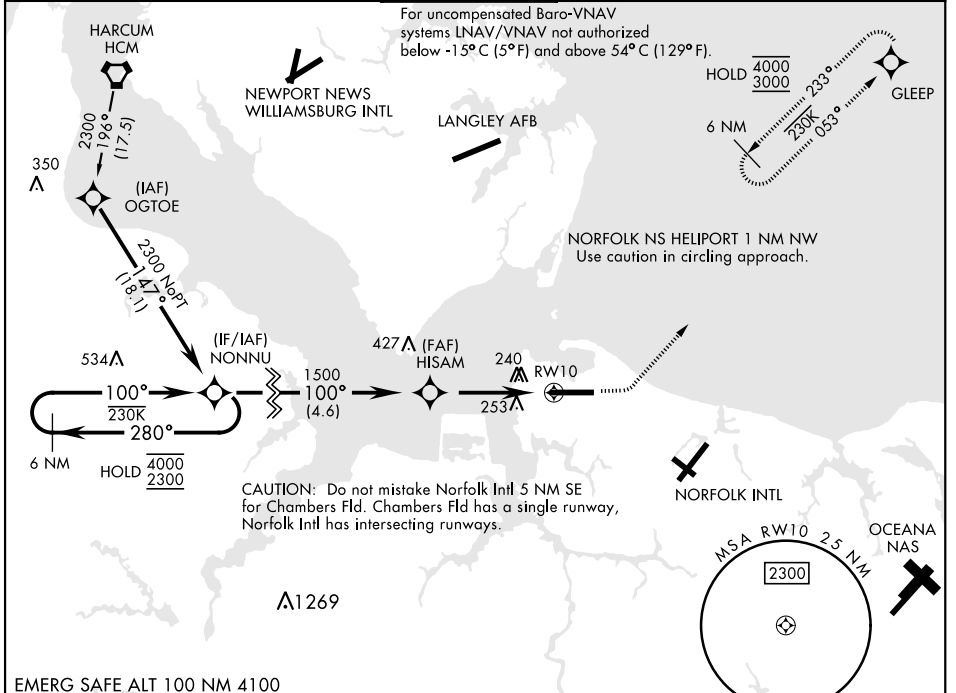
AL-290 [USN]

NORFOLK NS (CHAMBERS FIELD) (KNGU)

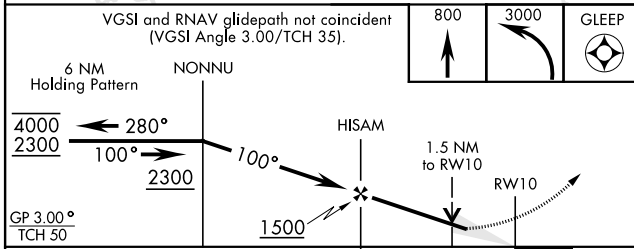
RNP APCH
 ▼ *When ALS inop, increase vis to 3/4 mile.
 **When ALS inop, increase vis to 1 3/8 miles.
 *** When ALS inop, increase CAT AB vis to 1 mile, CAT CDE vis to 1 1/8 miles.
 **** Circling not authorized S of Rwy 10-28.

ALS F-2
 MISSED APPROACH: Climb to 800 then climbing left turn to 3000 direct GLEEP and hold.

ATIS 118.425 338.225	APP CON 118.9 273.475	CHAMBERS TOWER 124.3 379.15	GND CON 121.8 370.85	CLNC DEL 120.7 339.8	ASR/PAR
--------------------------------	---------------------------------	---------------------------------------	--------------------------------	--------------------------------	---------

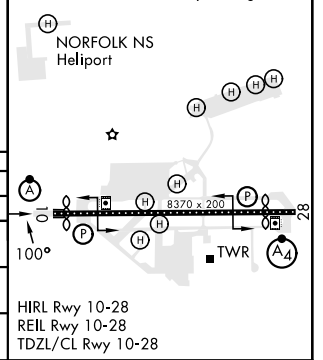


EMERG SAFE ALT 100 NM 4100



ELEV 15	TDZE 14
Rwy 10 Idg 8071' Rwy 28 Idg 7375'	

CATEGORY	A	B	C	D	E
LPV DA *	214-1/2		200	(200-1/2)	
LNAV/VNAV DA **	520-1		506	(600-1)	
LNAV MDA ***	520-1/2 506 (600-1/2)		520-1	506	(600-1)
CIRCLING ****	520-1 505 (600-1)	540-1 525 (600-1)	540-1 1/2 525 (600-1 1/2)	580-2	565 (600-2)



RNAV (GPS) RWY 10