

TACAN Z RWY 28

TACAN NGU Chan 86Y	APCH CRS 290°	Rwy ldg 7375' TDZE 14 Arprt Elev 15
------------------------------	-------------------------	--

AL-290 [USN]

NORFOLK NS (CHAMBERS FIELD) (KNGU)

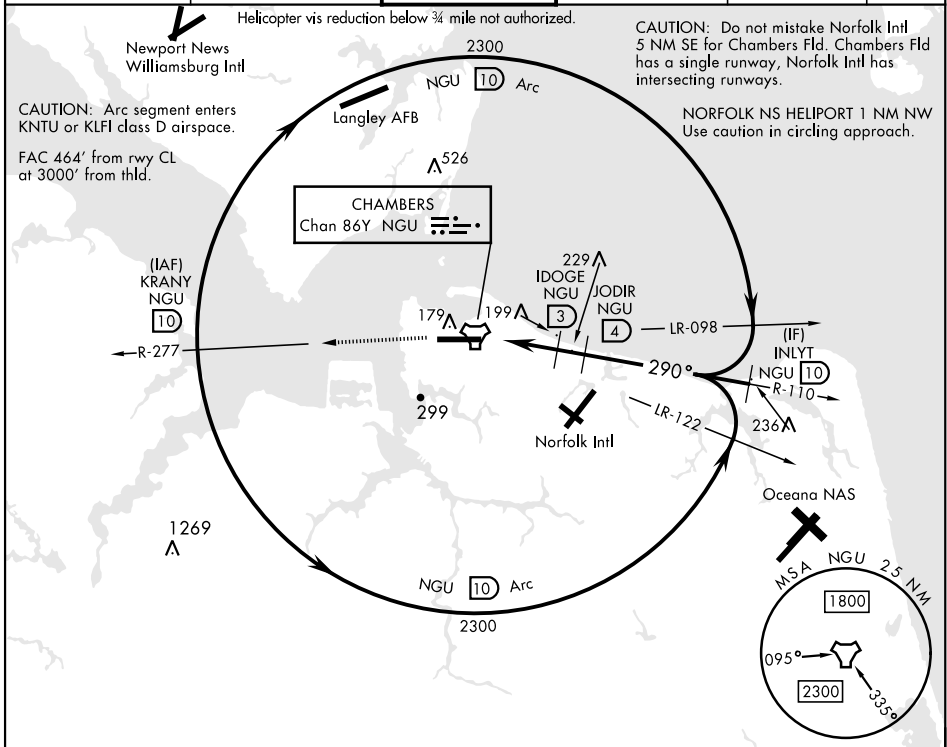
RADAR required.

▼ * When ALS inop, increase CAT AB vis to 1 mile, CAT CD vis to 1½ miles.
 ** Circling not authorized S of Rwy 10-28.

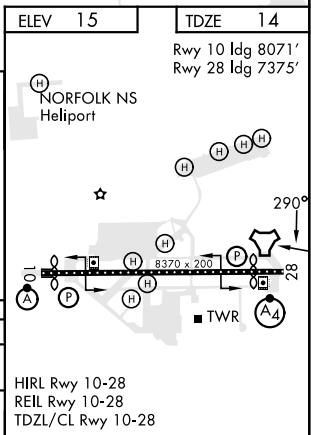
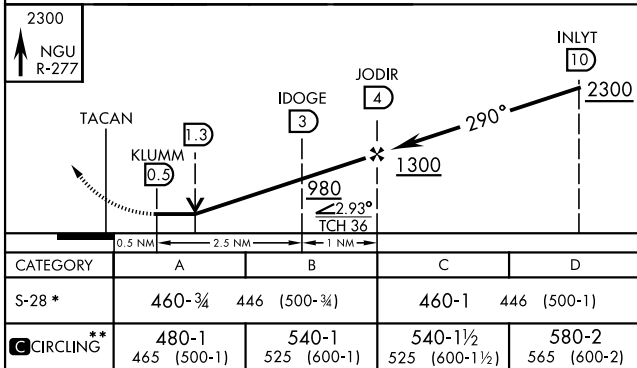


MISSED APPROACH: Climb to 2300 on NGU TACAN R-277 then as directed by ATC.

ATIS 118.425 338.225	APP CON 118.9 273.475	CHAMBERS TOWER 124.3 379.15	GND CON 121.8 370.85	CLNC DEL 120.7 339.8	ASR/PAR
--------------------------------	---------------------------------	---------------------------------------	--------------------------------	--------------------------------	---------



EMERG SAFE ALT 100 NM 4100



TACAN Z RWY 28

NE-3, 13 JUN 2024 to 11 JUL 2024

NE-3, 13 JUN 2024 to 11 JUL 2024