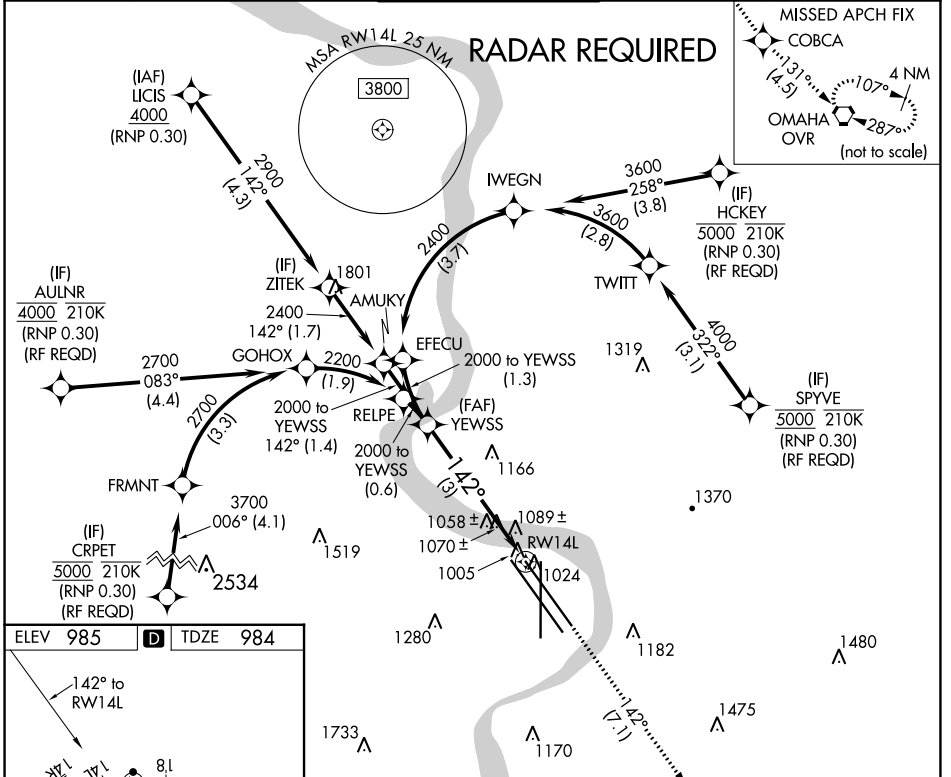


APP CRS <b>142°</b>	Rwy ldg TDZE Apt Elev	<b>8500</b> <b>984</b> <b>985</b>
------------------------	-----------------------------	---

# RNAV (RNP) Z RWY 14L

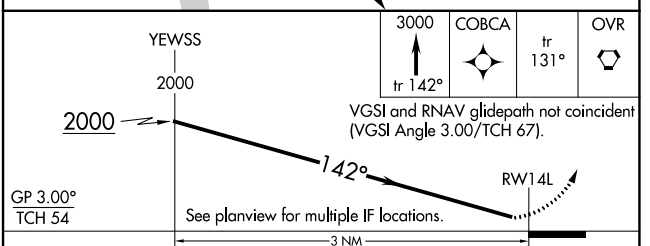
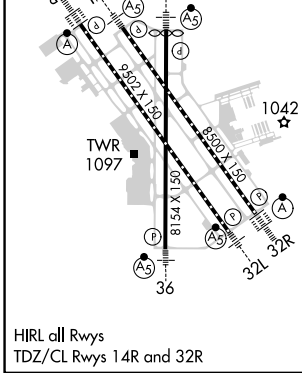
EPPLEY AIRFIELD (OMA)

<p><b>▼</b> For uncompensated Baro-VNAV systems, procedure NA below -17°C (2°F) or above 54°C (130°F). For inoperative ALS, increase RNP 0.15 all Cats visibility to 1½ and RNP 0.30 all Cats visibility to 1¾. GPS required.</p>		<p>MALSRL </p>	<p>MISSED APPROACH: Climb to 3000 on track 142° to COBCA and on track 131° to OVR VORTAC and hold.</p>	
D-ATIS <b>120.4</b>	OMAHA APP CON <b>120.1 354.05</b>	OMAHA TOWER <b>132.1 256.9</b>	GND CON <b>121.9</b>	CLNC DEL <b>119.9</b>



NC-2, 13 JUN 2024 to 11 JUL 2024

NC-2, 13 JUN 2024 to 11 JUL 2024



CATEGORY	A	B	C	D
RNP 0.15 DA		1335/40	351 (400-¾)	
RNP 0.30 DA		1395/45	411 (500-¾)	

HIRL all Rwys  
TDZ/CL Rwys 14R and 32R

## AUTHORIZATION REQUIRED

OMAHA, NEBRASKA  
Orig-B 24MAY18

41°18'N-95°54'W

# RNAV (RNP) Z RWY 14L

EPPLEY AIRFIELD (OMA)