

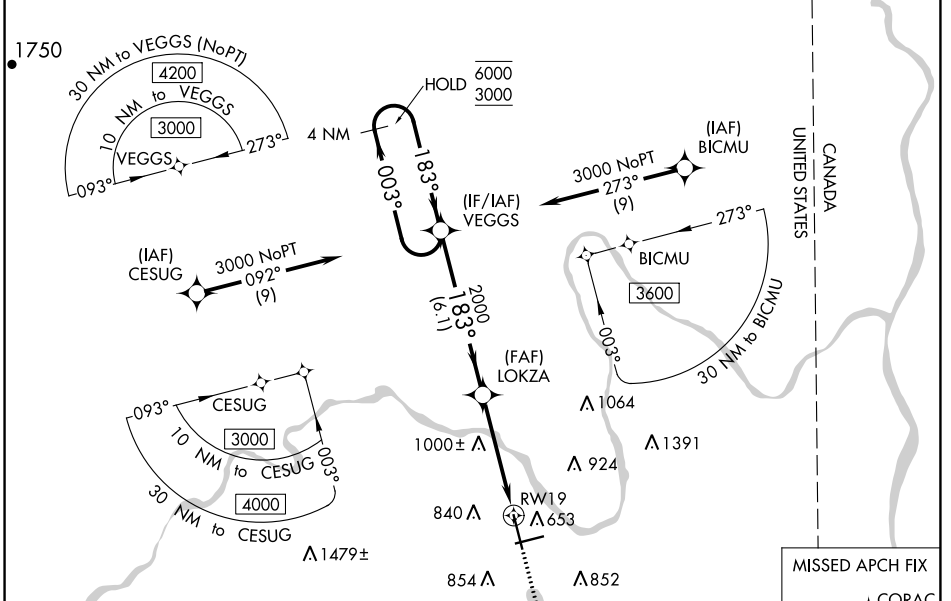
WAAS CH 99712 W19A	APP CRS 183°	Rwy Idg TDZE Apt Elev	7441 534 534
--	------------------------	-----------------------------	---

RNAV (GPS) RWY 19

PRESQUE ISLE INTL (PQI)

RNP APCH.	MISSED APPROACH: Climb to 3400 direct CORAC and hold.
<p>▼ Rwy 19 helicopter visibility reduction below 3/4 SM NA.</p> <p>▲ For uncompensated Baro-VNAV systems, LNAV/VNAV NA below -16°C or above 54°C.</p>	

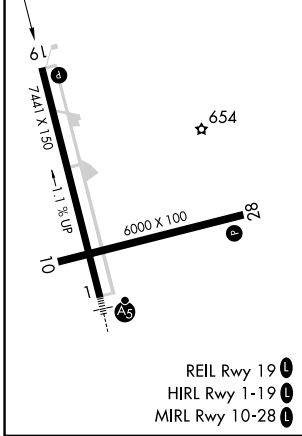
AWOS-3PT 118.025	BOSTON CENTER 124.75 239.05	CLNC DEL 121.6	UNICOM 122.8 (CTAF)	122.6
----------------------------	---------------------------------------	--------------------------	-------------------------------	--------------



NE-1, 13 JUN 2024 to 11 JUL 2024

NE-1, 13 JUN 2024 to 11 JUL 2024

ELEV 534	D	TDZE 534
----------	----------	----------



3400	CORAC	VGSI and RNAV glidepath not coincident (VGSI Angle 3.70/TCH 50).	4 NM Holding Pattern
*LNAV only.	RW19	LOKZA 2000	003° → 6000 ← 183° 3000
			GP 3.00° TCH 55

CATEGORY	A	B	C	D
LPV DA		926-1 1/8	392 (400-1 1/8)	
LNAV/VNAV DA		1115-1 3/4	581 (600-1 3/4)	
LNAV MDA	1240-1	706 (800-1)	1240-2	706 (800-2)
C CIRCLING	1240-1	706 (800-1)	1300-2 1/4 766 (800-2 1/4)	1360-2 3/4 826 (900-2 3/4)