

LOC I-PUB <b>109.5</b>	APP CRS <b>080°</b>	Rwy Idg <b>1049E</b>
		TDZE <b>4671</b>
		Apt Elev <b>4729</b>

# ILS or LOC RWY 8R

PUEBLO MEML (PUB)

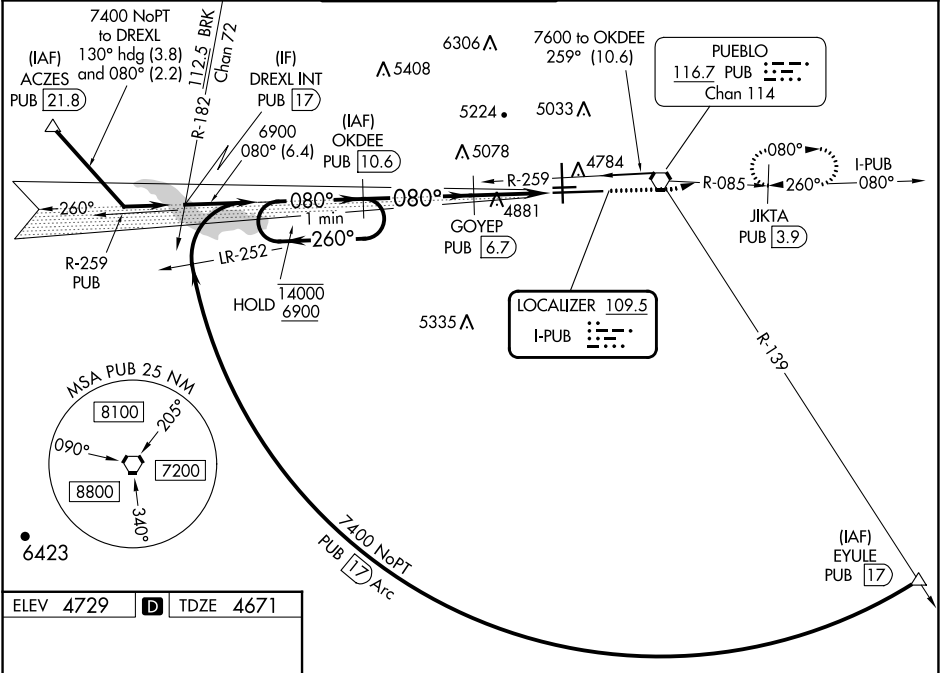
**DME required.**

**⚠** Circling NA for Cat E west of Rwy 17-35. Autopilot coupled approach NA below 4950. Procedure turn NA for Cat E aircraft. DME from PUB VORTAC, simultaneous reception of I-PUB and PUB DME required. For inop ALS, increase S-ILS 8R Cat E visibility to 3/4 SM and S-LOC 8R Cat E visibility to 1 1/2 SM.

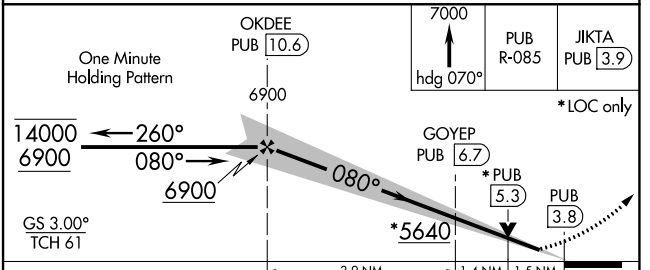
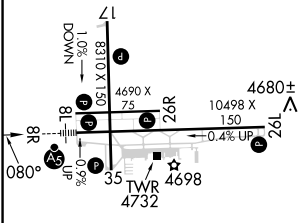
MALSR

**MISSED APPROACH:** Climb to 7000 on heading 070° and on PUB VORTAC R-085 to JIKTA/PUB 3.9 DME and hold, continue climb-in-hold to 7000.

ATIS <b>125.25</b>	DENVER APP CON ★ <b>120.1 290.5</b>	PUEBLO TOWER ★ <b>119.1 (CTAF) 257.8</b>	GND CON <b>121.9</b>	CLNC DEL <b>120.9</b>	UNICOM <b>122.95</b>
-----------------------	--	---	-------------------------	--------------------------	-------------------------



ELEV 4729	<b>D</b>	TDZE 4671
-----------	----------	-----------



CATEGORY	A	B	C	D	E
S-ILS 8R	4871-1/2 200 (200-1/2)				
S-LOC 8R	5200-1/2 529 (500-1/2)	5200-1 529 (500-1)			
<b>C</b> CIRCLING	5340-1 611 (700-1)	5580-2 1/2 851 (900-2 1/2)	5800-3	1071 (1100-3)	

HIRL Rwy 8R-26L **Ⓛ**  
 MIRL Rwy 17-35 and 8L-26R **Ⓛ**  
 REIL Rwy 8L, 17, 26L, 26R and 35 **Ⓛ**

SW-1, 13 JUN 2024 to 11 JUL 2024

SW-1, 13 JUN 2024 to 11 JUL 2024