

# RNAV (GPS) RWY 15R

APCH CRS	Rwy Idg	<b>8352</b>
<b>145°</b>	TDZE	<b>761</b>
	Arprt Elev	<b>761</b>

[USAF]

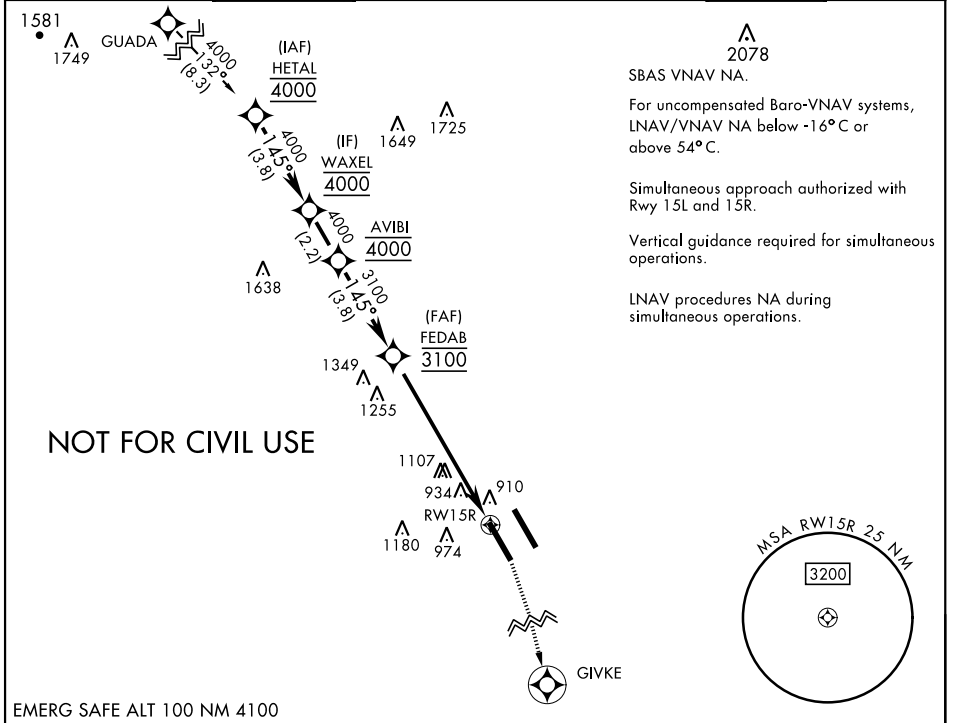
RANDOLPH AFB (KRND)

RNP APCH - GPS

\* Circling not authorized NE of Rwy 15R-33L.

MISSED APPROACH: Climb to 1600 then climbing right turn to 3000 direct GIVKE. Expect ATC instructions.

ATIS ★	SAN ANTONIO APP CON	TOWER ★	GND CON	CLNC DEL (RWY 15L-33R)	HANGOVER ATIS ★	HANGOVER TOWER ★	HANGOVER GND CON
<b>290.525</b>	<b>128.05 318.1</b>	<b>128.25 294.7</b>	<b>119.65 275.8</b>	<b>338.35</b>	<b>327.8</b>	<b>120.5 291.1</b>	<b>124.75 353.75</b>



SC-3, 13 JUN 2024 to 11 JUL 2024

SC-3, 13 JUN 2024 to 11 JUL 2024

EMERG SAFE ALT 100 NM 4100

			1600	3000	GIVKE	ELEV 761	TDZE 761
	HETAL	WAXEL	AVIBI	FEDAB			
	4000	4000	4000	3100			
	GP 3.00°				2.2 NM to RWY 15R		
	TCH 47						
					7.2 NM		
CATEGORY	A	B	C	D	E		
LNAV/VNAV DA	1206-1 $\frac{3}{4}$		445	(500-1 $\frac{3}{4}$ )			
LNAV MDA	1520/55 759 (800-1)	1520-1 $\frac{1}{4}$ 759 (800-1 $\frac{1}{4}$ )	1520-2	759 (800-2)			
CIRCLING*	1520-1 759 (800-1)	1520-1 $\frac{1}{4}$ 759 (800-1 $\frac{1}{4}$ )	1520-2 $\frac{1}{4}$ 759 (800-2 $\frac{1}{4}$ )	1800-3	1039 (1100-3)		
						HIRL all rwy	ALS Rwy 15L nstd len 2100'

# RNAV (GPS) RWY 15R