

LOC I-EZD <b>110.9</b>	APP CRS <b>023°</b>	Rwy Idg <b>6607</b>
		TDZE <b>161</b>
		Apt Elev <b>168</b>

# ILS or LOC RWY 2

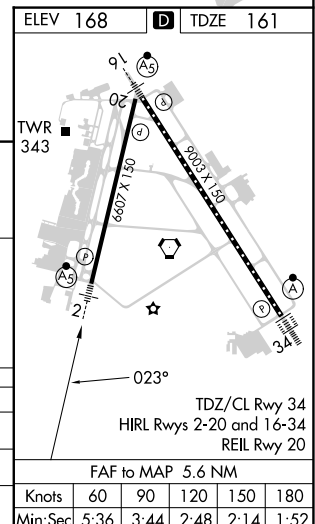
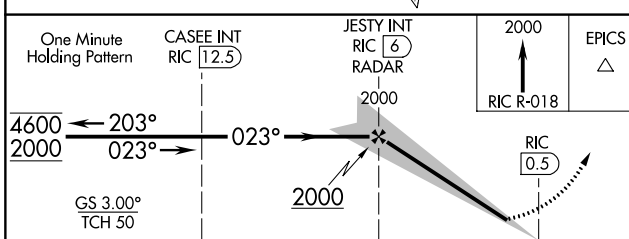
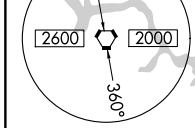
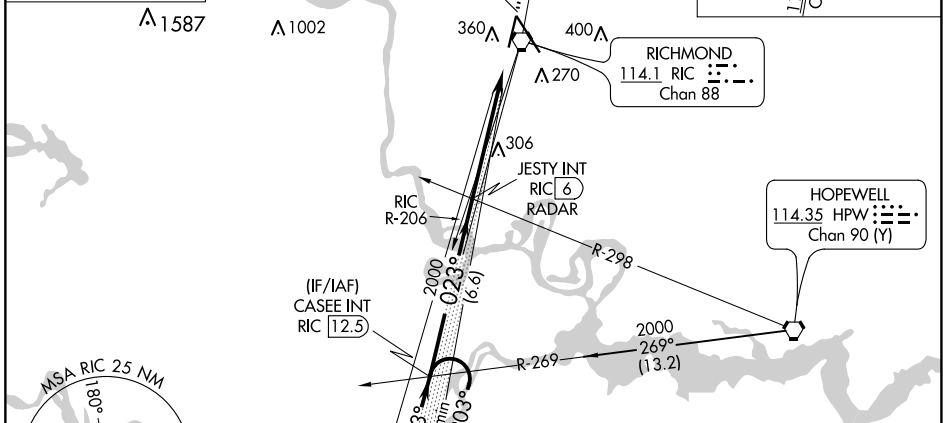
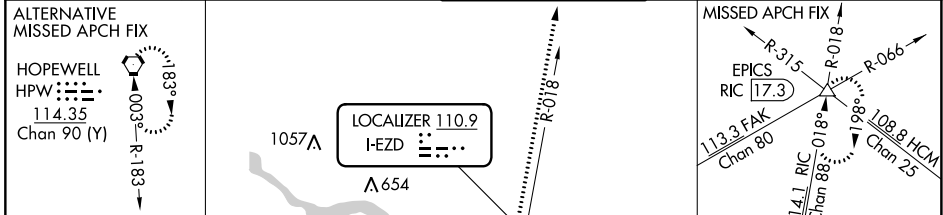
RICHMOND INTL (RIC)

**▼** Rwy 2 helicopter visibility reduction below ¾ SM NA. For inop ALS, increase S-ILS 2 all Cats visibility to ¾ SM and S-LOC 2 Cats A and B visibility to 1 SM.

MALSRL

MISSED APPROACH: Climb to 2000 on RIC VORTAC R-018 to EPICS INT/ RIC 17.3 DME and hold.

ATIS <b>119.15 263.025</b>	POTOMAC APP CON <b>126.4 282.375</b> (001°-185°) <b>126.75 307.2</b> (186°-360°)	RICHMOND TOWER <b>121.1 257.8</b>	GND CON <b>121.9 348.6</b>	CLNC DEL <b>127.55 348.6</b>
-------------------------------	--	--------------------------------------	-------------------------------	---------------------------------



CATEGORY	A	B	C	D
S-ILS 2		457-¾ 296 (300-¾)		
S-LOC 2		560-¾ 399 (400-¾)		
<b>C</b> CIRCLING	660-1 492 (500-1)		700-1½ 532 (600-1½)	720-2 552 (600-2)

NE-3, 13 JUN 2024 to 11 JUL 2024

NE-3, 13 JUN 2024 to 11 JUL 2024