

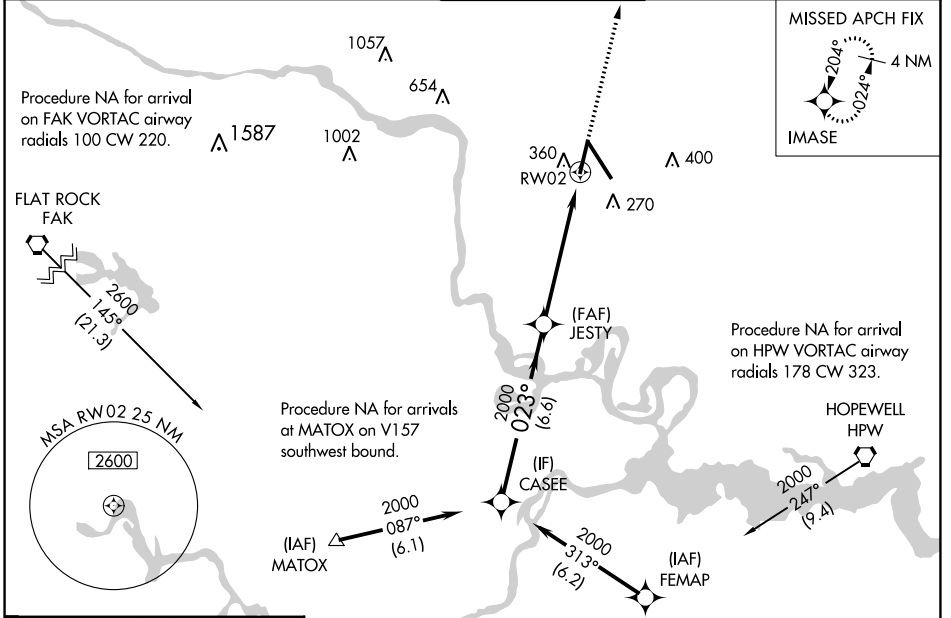
WAAS CH <b>72716</b> <b>W02A</b>	APP CRS <b>023°</b>	Rwy Idg TDZE <b>161</b> Apt Elev <b>168</b>	<b>6607</b>
--	------------------------	---	-------------

# RNAV (GPS) Z RWY 2

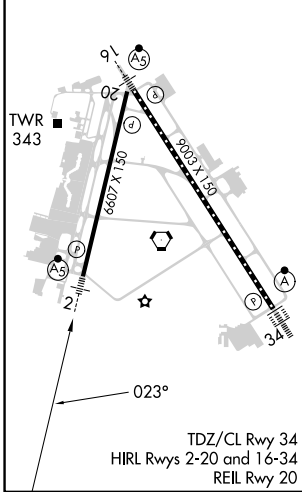
RICHMOND INTL (RIC)

RNP APCH.	MALS R	MISSED APPROACH: Climb to 2000 direct IMASE and hold.
<p>▼ For uncompensated Baro-VNAV systems, LNAV/VNAV NA below -11°C (13°F) or above 54°C (130°F). Rwy 2 helicopter visibility reduction below ¾ SM NA.</p>		

ATIS <b>119.15 263.025</b>	POTOMAC APP CON <b>126.4 282.375</b> (001°-185°) <b>126.75 307.2</b> (186°-360°)	RICHMOND TOWER <b>121.1 257.8</b>	GND CON <b>121.9 348.6</b>	CLNC DEL <b>127.55 348.6</b>
-------------------------------	--	--------------------------------------	-------------------------------	---------------------------------



ELEV <b>168</b>	<b>D</b>	TDZE <b>161</b>
-----------------	----------	-----------------



	CASEE	JESTY	2000	IMASE
	2000	023°	2000	023°
	GP 3.00°			
	TCH 50			
	6.6 NM	4.3 NM	1.3 NM	
CATEGORY	A	B	C	D
LPV DA		457-¾	296 (300-¾)	
LNAV/VNAV DA		568-⅞	407 (400-⅞)	
LNAV MDA	620-¾	459 (500-¾)	620-1	459 (500-1)
<b>C</b> CIRCLING	660-1	492 (500-1)	700-1½	720-2
			532 (600-1½)	552 (600-2)

NE-3, 13 JUN 2024 to 11 JUL 2024

NE-3, 13 JUN 2024 to 11 JUL 2024