

# VOR Y RWY 32

VOR HDF <b>112.05</b>	APCH CRS <b>315°</b>	Rwy Ldg <b>13,302</b> TDZE <b>1497</b> Arpt Elev <b>1536</b>
--------------------------	-------------------------	--

AL-348 [USAF]

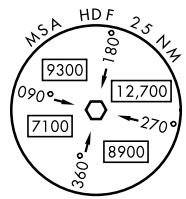
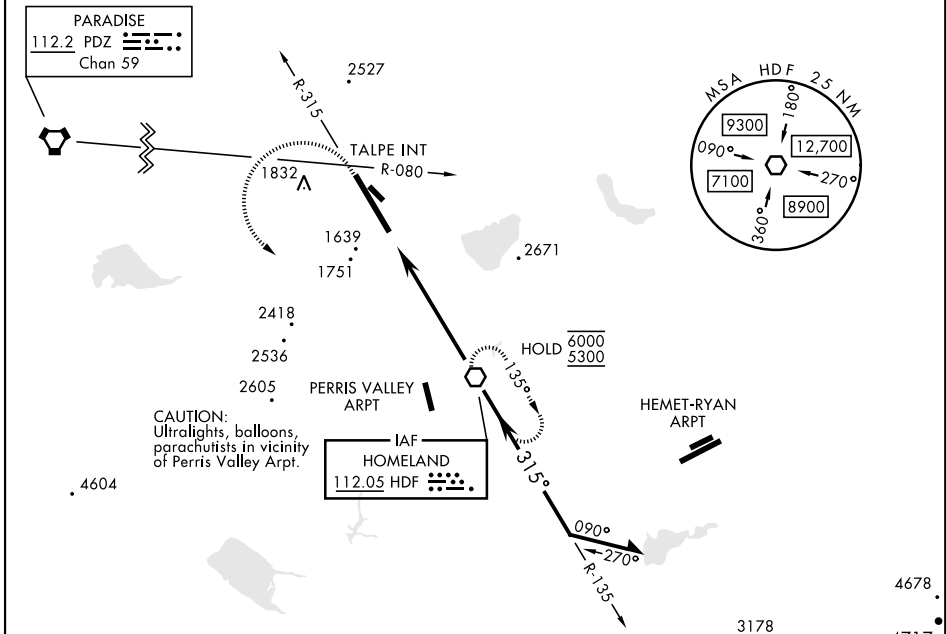
MARCH ARB (KRIV)

▼ \*When ALS inop, increase CAT AB RVR to 60 and vis to 1½ mile, CAT CDE vis to 1½ miles.  
 \*\* Circling not authorized NE of Rwy 14-32. Rapid rising terrain.



MISSED APPROACH: Climb to 5300 on HDF VOR R-315 to TALPE, then turn left direct HDF continue climb-in-hold to 5300.

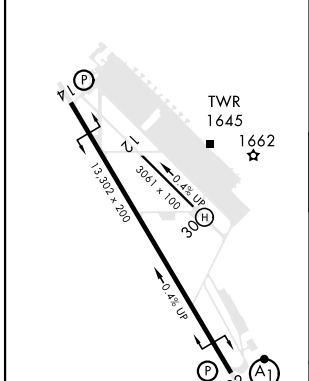
ATIS <b>134.75 239.05</b>	APP/DEP CON ★ <b>133.5 306.975</b>	TOWER <b>127.65 253.5</b>	GND CON <b>121.75 335.8</b>	CLNC DEL <b>127.775 268.7</b>
------------------------------	---------------------------------------	------------------------------	--------------------------------	----------------------------------



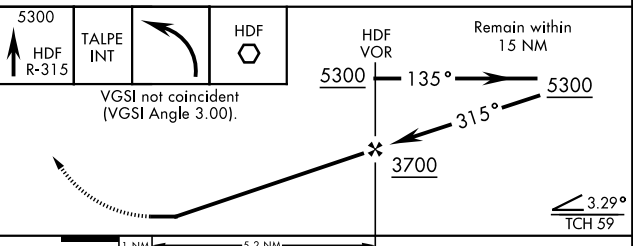
SW-3, 13 JUN 2024 to 11 JUL 2024

SW-3, 13 JUN 2024 to 11 JUL 2024

ELEV 1536	TDZE 1497
-----------	-----------



EMERG SAFE ALT 100 NM 13,700



CATEGORY	A	B	C	D	E
S-32 *	2040/40 543 (600-¾)		2040/60	543	(600-1½)
<b>CIRCLING</b> **	2180-1½ 644 (700-1½)	2260-1½ 724 (800-1½)	2300-2¼ 764 (800-2¼)	2440-3 904 (1000-3)	2840-3 1304 (1400-3)

# VOR Y RWY 32