

# CHALONE THREE DEPARTURE

AL-363 (FAA)

SALINAS MUNI (SNS)  
SALINAS, CALIFORNIA

ATIS  
124.85  
GND CON  
121.7  
NORCAL DEP CON  
133.0 251.15  
CTAF  
119.525

WOODSIDE  
113.9 OSI  
Chan 86

SAN JOSE  
114.1 SJC  
Chan 88

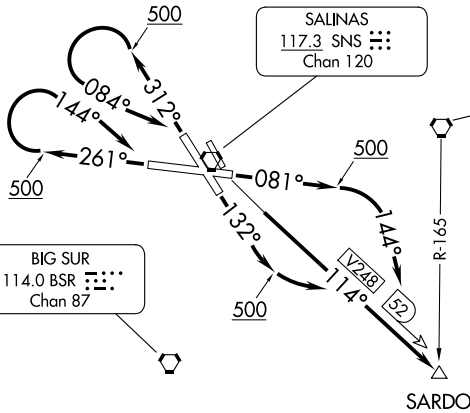
SALINAS  
117.3 SNS  
Chan 120

PANOCHÉ  
112.6 PXN  
Chan 73

BIG SUR  
114.0 BSR  
Chan 87

AVENAL  
117.1 AVE  
Chan 118

FILLMORE  
112.5 FIM  
Chan 72



### TAKEOFF MINIMUMS

Rwys 8, 13: Standard with minimum climb of 360' per NM to 6000.  
Rwys 26, 31: Cats A/B standard with minimum climb of 380' per NM to 6000.  
Cats C/D standard with minimum climb of 550' per NM to 6000.

NOTE: Cat A/B aircraft departing Rwy 26 and 31 - Do not exceed 210 K until passing SARDO INT.

NOTE: Chart not to scale.

### DEPARTURE ROUTE DESCRIPTION

**TAKEOFF RUNWAY 8:** Climb heading 081° to 500 then climbing right turn heading 144° to intercept SNS R-114 (V248) southeast bound to SARDO INT. Thence . . .

**TAKEOFF RUNWAY 13:** Climb heading 132° to 500 then climbing left turn to intercept SNS R-114 (V248) southeast bound to SARDO INT. Thence . . .

**TAKEOFF RUNWAY 26:** Climb heading 261° to 500 then climbing right turn heading 144° to intercept SNS R-114 (V248) southeast bound to SARDO INT. Thence . . .

**TAKEOFF RUNWAY 31:** Climb heading 312° to 500 then climbing left turn heading 084° to intercept SNS R-114 (V248) southeast bound to SARDO INT. Thence . . .

. . . Proceed on assigned route. Expect clearance to filed altitude 5 minutes after departure.

# CHALONE THREE DEPARTURE