

(FFU9.FFU) 24025

# FAIRFIELD NINE DEPARTURE

AL-365 (FAA)

SALT LAKE CITY INTL (SLC)  
SALT LAKE CITY, UTAH

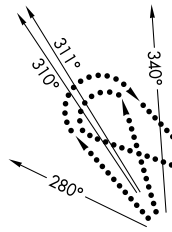
D-ATIS  
124.75 125.625  
CLNC DEL  
127.3 379.975  
CPDLC  
SALT LAKE CITY DEP CON  
128.6 322.3

**TOP ALTITUDE:  
10000**

### TAKEOFF MINIMUMS

Rwys 14, 32, 34L/R, 35: NA- ATC.  
Rwys 16L/R, 17: Assigned heading 160°, standard with minimum climb of 260' per NM to 6000; assigned heading 280° CW 340°, standard with minimum climb of 400' per NM to 8300.

NOTE: DME required.  
NOTE: RADAR required.  
NOTE: This is a RADAR vector departure to assigned route or fix.



WASATCH  
116.8 TCH  
Chan 115

FAIRFIELD  
116.6 FFU  
Chan 113

DELTA  
116.1 DTA  
Chan 108

MILFORD  
112.1 MLF  
Chan 58

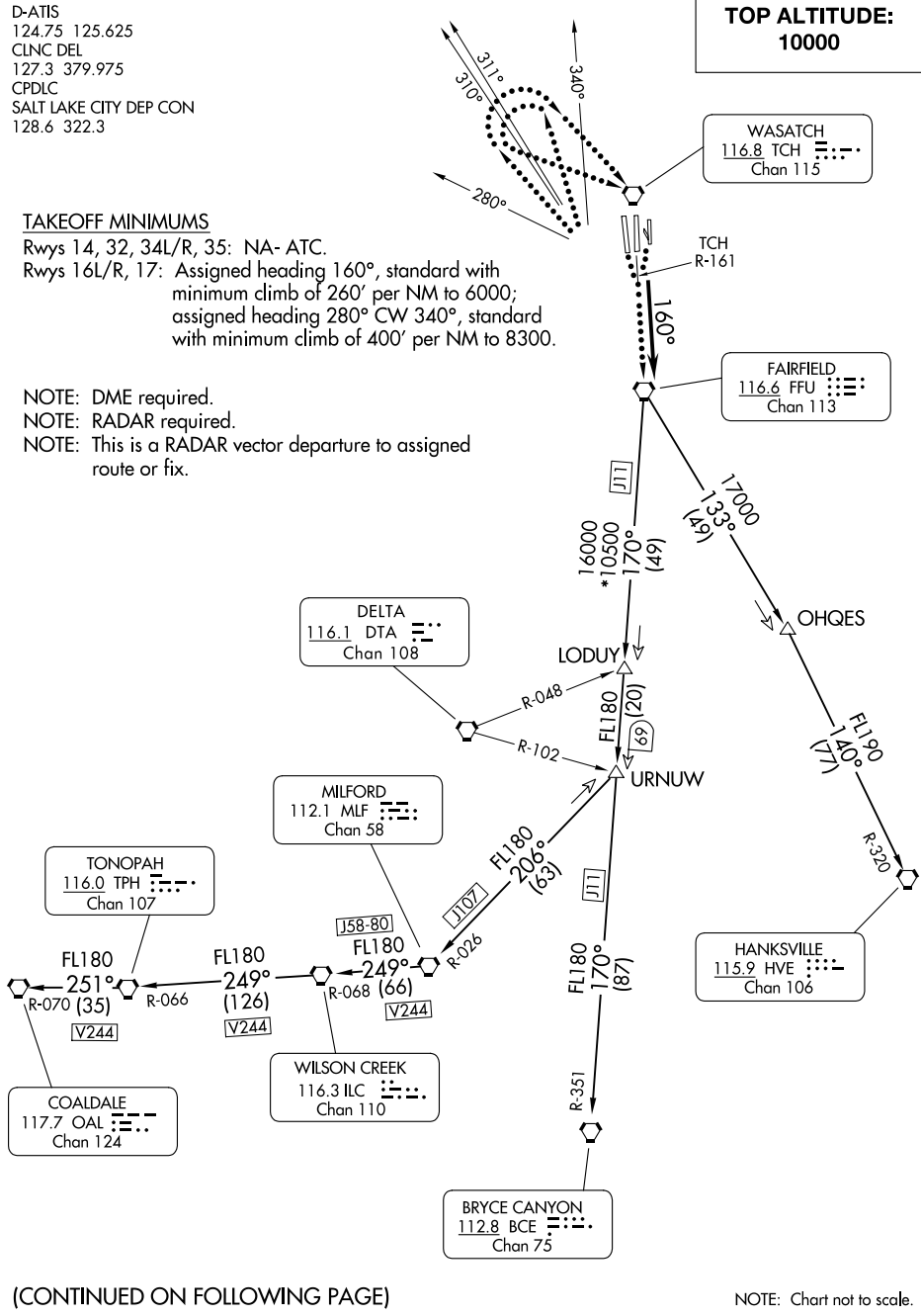
TONOPAH  
116.0 TPH  
Chan 107

HANKSVILLE  
115.9 HVE  
Chan 106

COALDALE  
117.7 OAL  
Chan 124

WILSON CREEK  
116.3 ILC  
Chan 110

BRYCE CANYON  
112.8 BCE  
Chan 75



SW-4, 13 JUN 2024 to 11 JUL 2024

SW-4, 13 JUN 2024 to 11 JUL 2024

(CONTINUED ON FOLLOWING PAGE)

NOTE: Chart not to scale.

# FAIRFIELD NINE DEPARTURE

(FFU9.FFU) 17AUG17

SALT LAKE CITY, UTAH  
SALT LAKE CITY INTL (SLC)