

LOC/DME I-MOY <b>109.5</b> Chan <b>32</b>	APP CRS <b>164°</b>	Rwy Idg <b>12002</b> TDZE <b>4227</b> Apt Elev <b>4227</b>
---	------------------------	--

# ILS RWY 16L (CAT II & III)

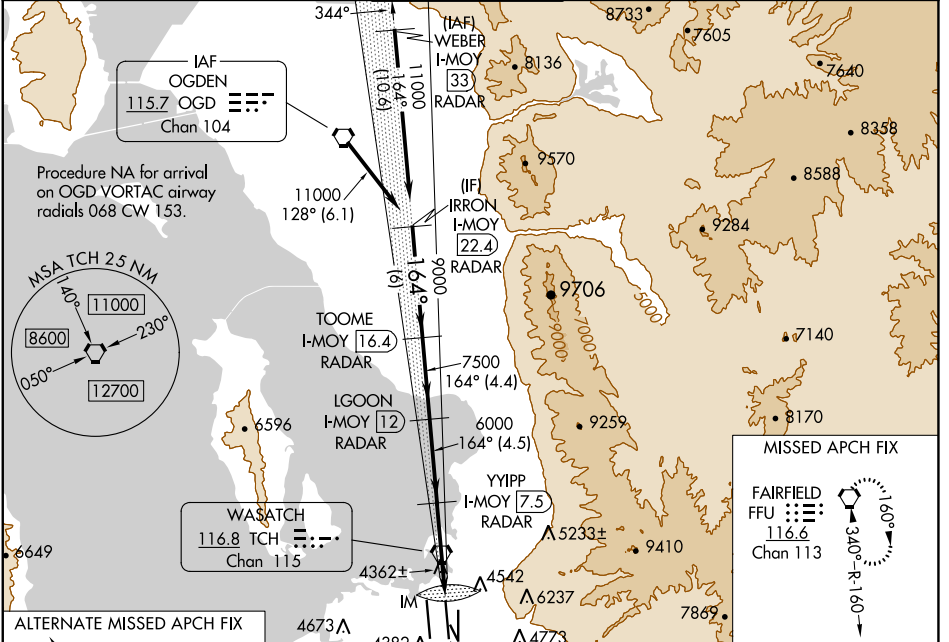
SALT LAKE CITY INTL (SLC)

Simultaneous approach authorized. DME or RADAR required.  
 CAT II: RVR 1000 authorized with specific OPSPEC, MSPEC, or LOA approval and use of autoland or HUD to touchdown.

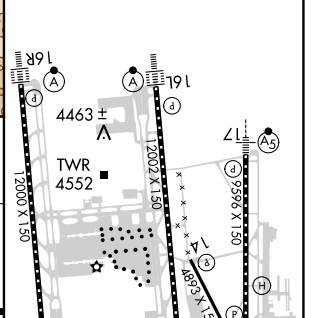
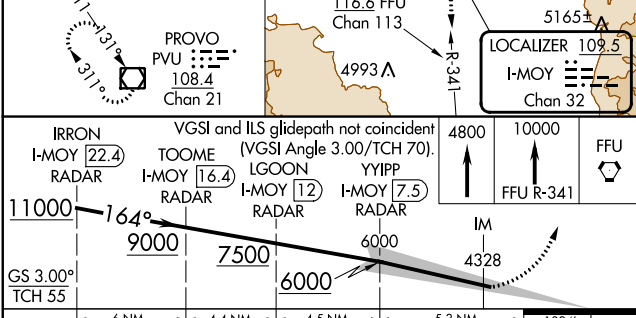
ALSF-2

MISSED APPROACH: Climb to 4800 then climb to 10000 on FFU VORTAC R-341 to FFU VORTAC and hold.

D-ATIS <b>124.75 125.625</b>	SALT LAKE CITY APP CON <b>125.7 284.6</b>	SALT LAKE CITY TOWER <b>119.05 257.8</b>	GND CON <b>123.775 348.6</b>	CLNC DEL <b>127.3 379.975</b>	CPDLC
---------------------------------	--	---	---------------------------------	----------------------------------	-------



ELEV 4227	TDZE 4227
-----------	-----------



CATEGORY	A	B	C	D
S-ILS 16L	CAT II RA 108/12 100 DA 4327			
S-ILS 16L	CAT IIIa RVR 07			
S-ILS 16L	CAT IIIb RVR 03			
S-ILS 16L	CAT IIIc NA			

## CATEGORY II & III ILS - SPECIAL AIRCREW & AIRCRAFT CERTIFICATION REQUIRED

HIRL all Rwys  
 TDZ/CL Rwys 16L, 16R, 17, 34L, 34R and 35

SW-4, 13 JUN 2024 to 11 JUL 2024

SW-4, 13 JUN 2024 to 11 JUL 2024