

LOC/DME I-BNT 111.5 Chan 52	APP CRS 169°	Rwy Idg TDZE Apt Elev	9596 4219 4227
---	------------------------	-----------------------------	---

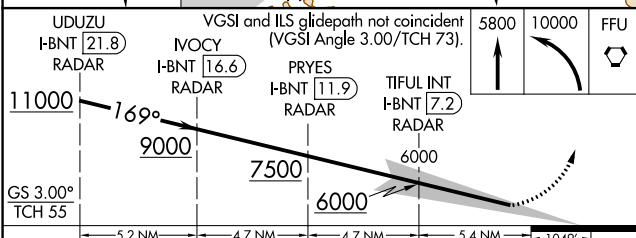
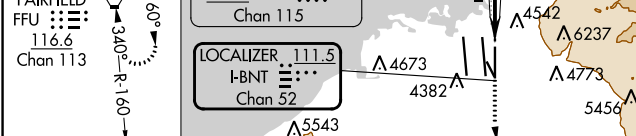
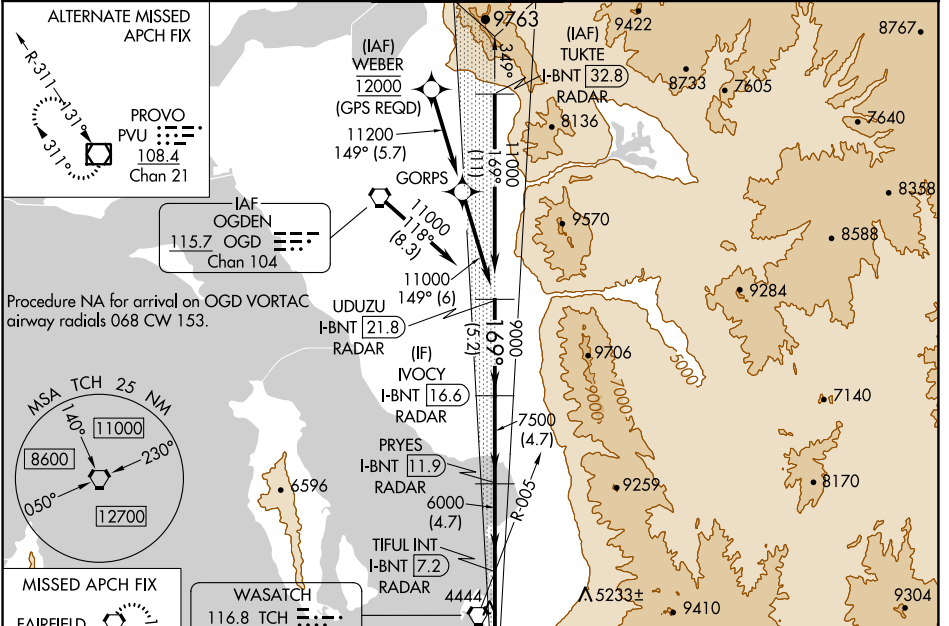
ILS RWY 17 (SA CAT I & II)

SALT LAKE CITY INTL (SLC)

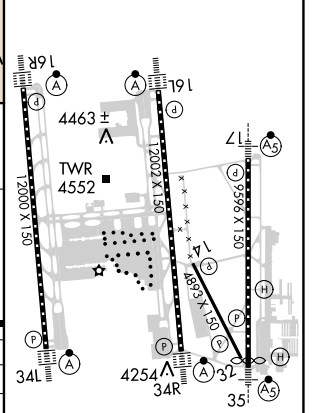
▼ DME or RADAR required. Simultaneous approach authorized. SA CAT I: Requires specific OPSPEC, MSPEC, or LOA approval and use of HUD to DH. SA CAT II: Reduced lighting: Requires specific OPSPEC, MSPEC, or LOA approval and use of autoland or HUD to touchdown.

MALS MISSED APPROACH: Climb to 5800 then climbing left turn to 10000 direct FFU VORTAC and hold.

D-ATIS 124.75 125.625	SALT LAKE CITY APP CON 125.7 284.6	SALT LAKE CITY TOWER 118.3 257.8	GND CON 121.9 348.6	CLNC DEL 127.3 379.975	CPDLC
---------------------------------	--	--	-------------------------------	----------------------------------	-------



ELEV 4227	D	TDZE 4219
-----------	---	-----------



CATEGORY	A	B	C	D
S-ILS 17	SA CAT I RA 149/14 150 DA 4369			
S-ILS 17	SA CAT II RA 99/12 100 DA 4319			

SA CATEGORY I & II ILS - SPECIAL AIRCREW & AIRCRAFT CERTIFICATION REQUIRED

HIRL all Rwws
TDZ/CL Rwws 16L, 16R, 17, 35, 34L, and 34R

SW-4, 13 JUN 2024 to 11 JUL 2024

SW-4, 13 JUN 2024 to 11 JUL 2024