

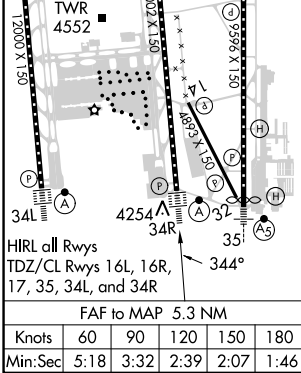
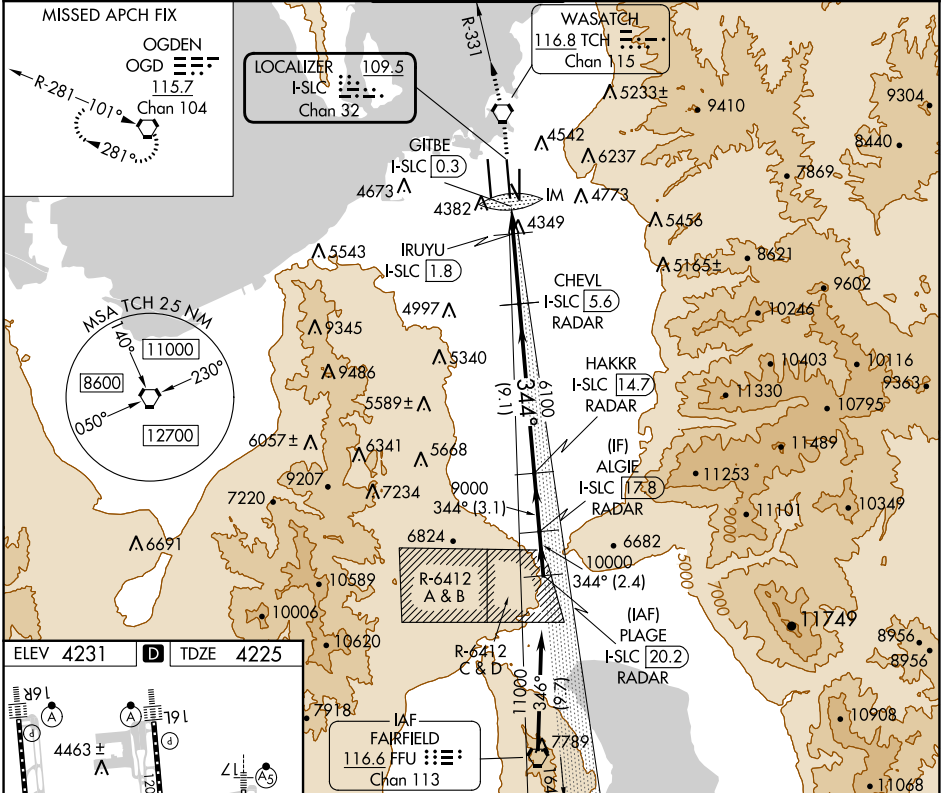
LOC/DME I-SLC 109.5 Chan 32	APP CRS 344°	Rwy Idg 12002 TDZE 4225 Apt Elev 4231
--	------------------------	--

ILS or LOC RWY 34R

SALT LAKE CITY INTL (SLC)

DME required for LOC only.		ALSIF-2	MISSED APPROACH: Climb to 9000 direct TCH VORTAC and on TCH VORTAC R-331 to OGD VORTAC and hold.		
Simultaneous approach authorized.					

D-ATIS 124.75 125.625	SALT LAKE CITY APP CON 125.7 284.6	SALT LAKE CITY TOWER 119.05 257.8	GND CON 123.775 348.6	CLNC DEL 127.3 379.975	CPDLC
---------------------------------	--	---	---------------------------------	----------------------------------	-------



9000 TCH	TCH R-331	OGD	VGSI and ILS glidepath not coincident (VGSI Angle 3.00/TCH 73).	PLAGE ALGIE I-SLC [20.2] RADAR
				HAKKR I-SLC [14.7] RADAR
				CHEVL I-SLC [5.6] RADAR
				IRUYU I-SLC [1.8] RADAR
				GITBE I-SLC [0.3]
				IM
				6100
				9000
				11000
				344°
				GS 3.00° TCH 53
				0.1-0.4-0.8 NM
				0.7-3.8 NM
				9.1 NM
				3.1 NM
				2.4 NM
CATEGORY	A	B	C	D
S-ILS 34R	4425/18 200 (200-½)			
S-LOC 34R	4700/24	475 (500-½)	4700/50	475 (500-1)

SW-4, 13 JUN 2024 to 11 JUL 2024

SW-4, 13 JUN 2024 to 11 JUL 2024