

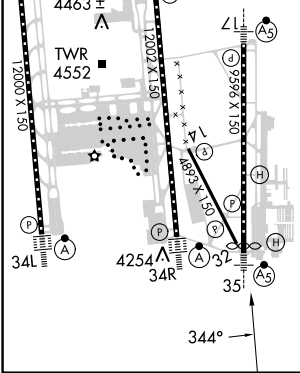
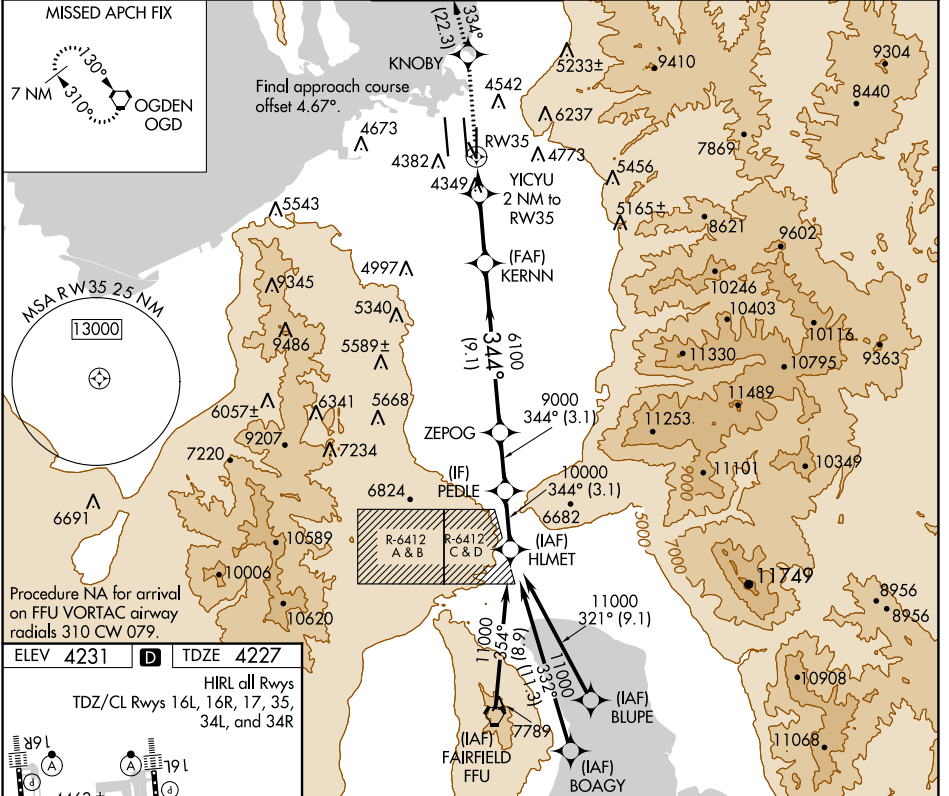
WAAS CH 42843 W35A	APP CRS 344°	Rwy Idg TDZE Apt Elev	9272 4227 4231
--	------------------------	-----------------------------	---

RNAV (GPS) RWY 35

SALT LAKE CITY INTL (SLC)

RNP APCH - GPS.	MALS/R	MISSED APPROACH: Climb to 9000 direct KNOBY and on track 334° to OGD VORTAC and hold.
▼ For inop ALS, increase LP Cat C, D and E visibility to RVR 5500, increase LNAV Cat E visibility to 1½ SM.		

D-ATIS 124.75 125.625	SALT LAKE CITY APP CON 125.7 284.6	SALT LAKE CITY TOWER 118.3 257.8	GND CON 121.9 348.6	CLNC DEL 127.3 379.975	CPDLC
---------------------------------	--	--	-------------------------------	----------------------------------	-------



ELEV 4231	TDZE 4227	HIRL all Rwys TDZ/CL Rwys 16L, 16R, 17, 35, 34L, and 34R			
		and descent angles not coincident (VGSi Angle 3.00/TCH 74).			
9000	KNOBY	OGD	HLMET		
	tr 334°				
	YICYU 2 NM to RW35	KERNN	ZEPOG		
	0.9 NM to RW35		PEDLE		
			HLMET		
			344°		
			11000		
			10000		
			9000		
			6100		
			4900		
			3.00° TCH 55		
			0.9 1.1 -3.7 9.1 -3.1 -3.1 NM		
CATEGORY	A	B	C	D	E
LP MDA	4600/24	373 (400-½)	4600/35	373 (400-½)	
LNAV MDA	4760/24	533 (600-½)	4760/55	533 (600-1)	

SW-4, 13 JUN 2024 to 11 JUL 2024

SW-4, 13 JUN 2024 to 11 JUL 2024