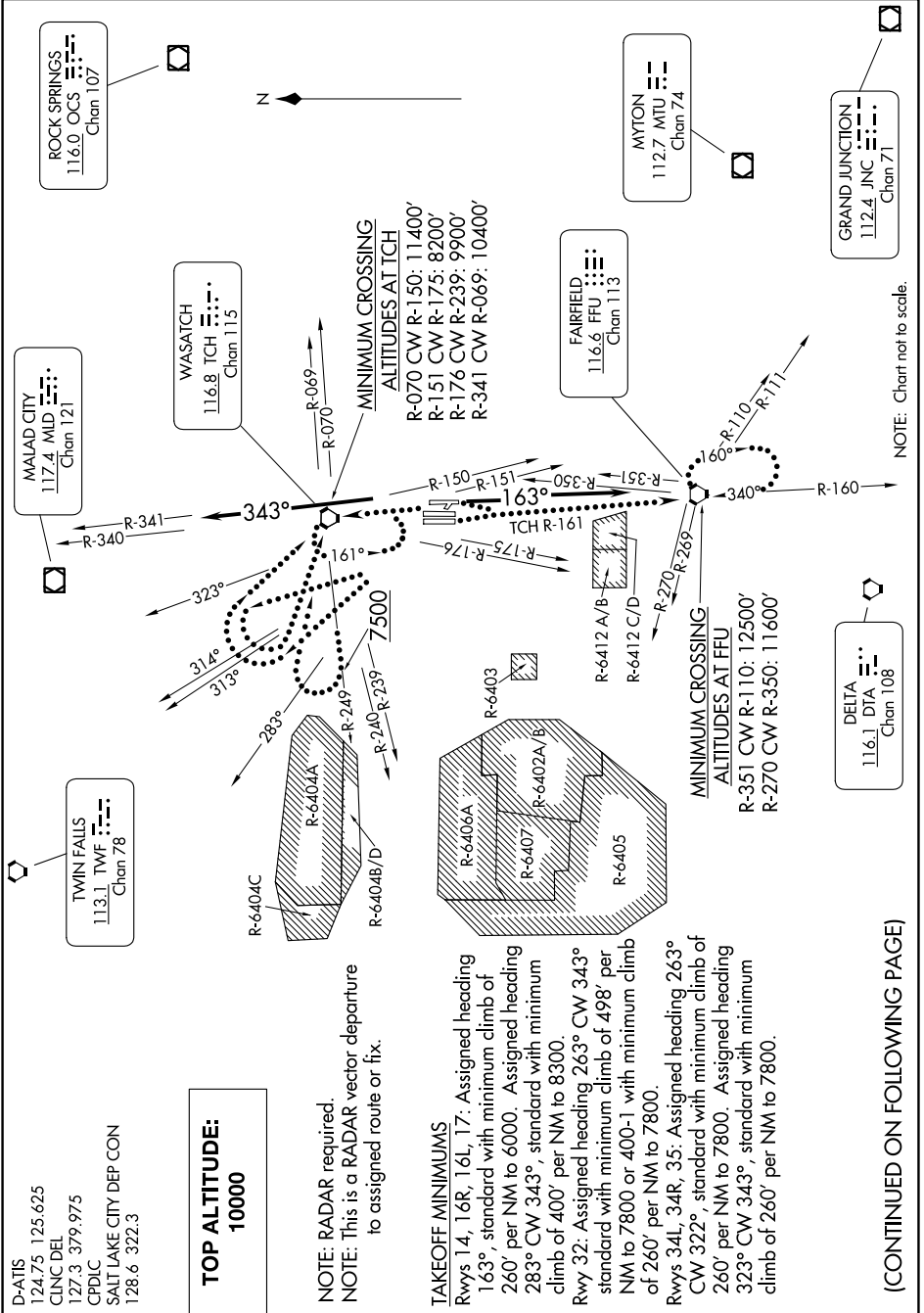


SALT LAKE FOUR DEPARTURE

AL-365 (FAA)

SALT LAKE CITY INTL (SLC)
SALT LAKE CITY, UTAH

SW-4, 13 JUN 2024 to 11 JUL 2024



D-ATIS
124.75 125.625
CLNC DEL
127.3 379.975
CPDLC
SALT LAKE CITY DEP CON
128.6 322.3

**TOP ALTITUDE:
10000**

NOTE: RADAR required.
NOTE: This is a RADAR vector departure
to assigned route or fix.

TAKEOFF MINIMUMS
Rwys 14, 16R, 16L, 17: Assigned heading 163°, standard with minimum climb of 260' per NM to 6000. Assigned heading 283° CW 343°, standard with minimum climb of 400' per NM to 8300.
Rwy 32: Assigned heading 263° CW 343° standard with minimum climb of 498' per NM to 7800 or 400-1 with minimum climb of 260' per NM to 7800.
Rwys 34L, 34R, 35: Assigned heading 263° CW 322°, standard with minimum climb of 260' per NM to 7800. Assigned heading 323° CW 343°, standard with minimum climb of 260' per NM to 7800.

(CONTINUED ON FOLLOWING PAGE)

NOTE: Chart not to scale.

SW-4, 13 JUN 2024 to 11 JUL 2024