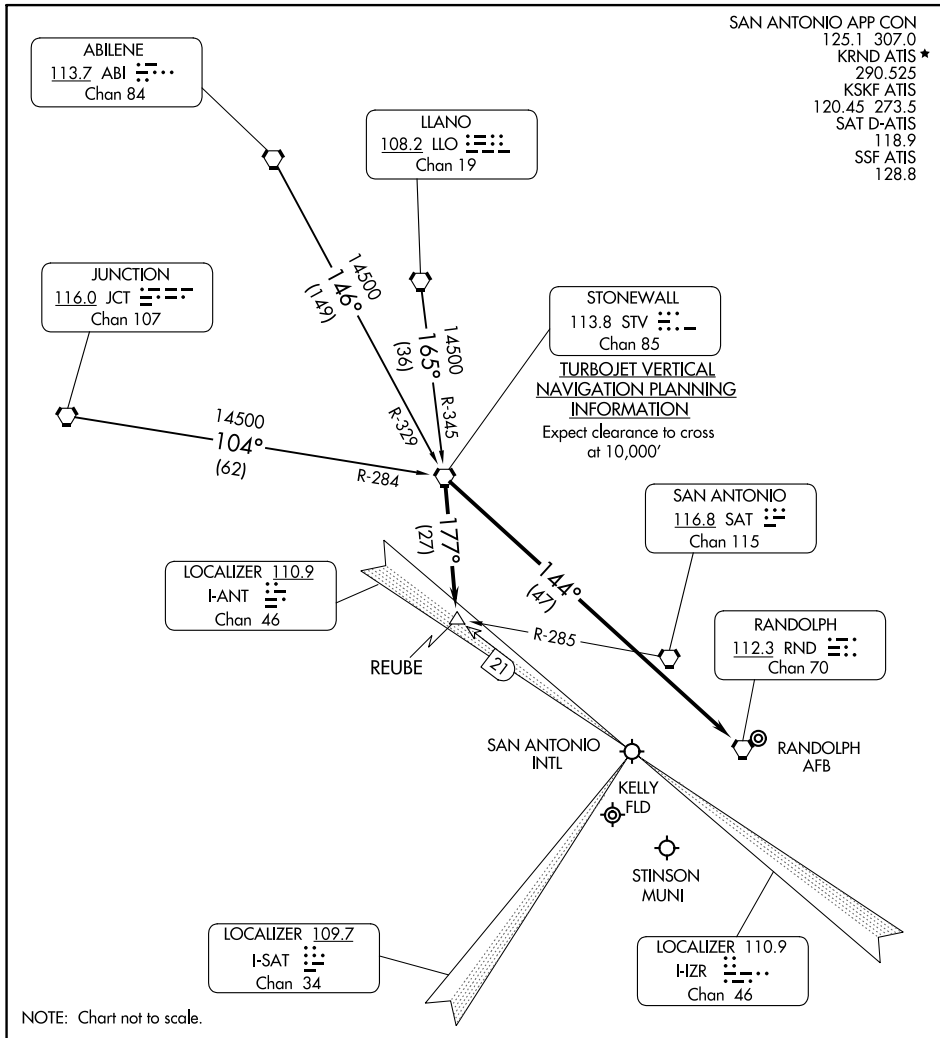


# STONEWALL ONE ARRIVAL

SAN ANTONIO, TEXAS

SAN ANTONIO APP CON  
 125.1 307.0  
 KRND ATIS \*  
 290.525  
 KSKF ATIS  
 120.45 273.5  
 SAT D-ATIS  
 118.9  
 SSF ATIS  
 128.8



SC-3, 13 JUN 2024 to 11 JUL 2024

SC-3, 13 JUN 2024 to 11 JUL 2024

NOTE: Chart not to scale.

## ARRIVAL ROUTE DESCRIPTION

ABILENE TRANSITION (ABI.STV1): From over ABI VORTAC via ABI R-146 and STV R-329 to STV VORTAC. Thence . . . .

JUNCTION TRANSITION (JCT.STV1): From over JCT VORTAC via JCT R-104 and STV R-284 to STV VORTAC. Thence . . . .

LLANO TRANSITION (LLO.STV1): From over LLO VORTAC via LLO R-165 and STV R-345 to STV VORTAC. Thence . . . .

ALL AIRPORTS EXCEPT RANDOLPH AIR FORCE BASE: . . . . From over STV VORTAC via STV R-177 to REUBE INT. Expect radar vectors to final approach course.

RANDOLPH AIR FORCE BASE: . . . . From over STV VORTAC via direct RND VORTAC.

# STONEWALL ONE ARRIVAL

SAN ANTONIO, TEXAS