


LOC/DME I-SAN 111.55 Chan 52 (Y)	APP CRS 095°	Rwy Idg 7280 TDZE 17 Apt Elev 17
---	------------------------	---

ILS Y or LOC Y RWY 9

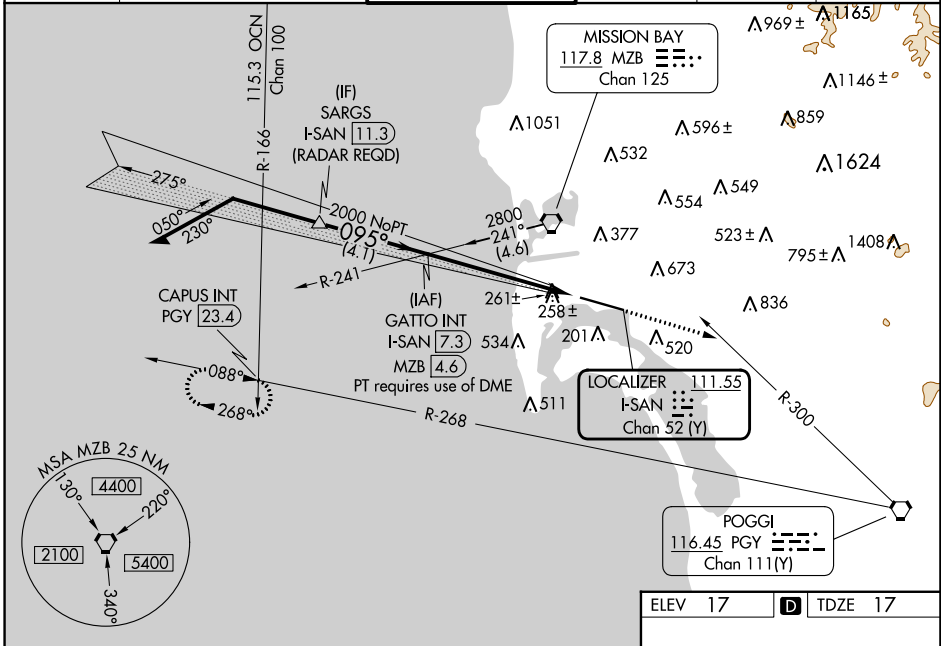
SAN DIEGO INTL (SAN)

⚠ Circling NA north of Rwy 9-27. Autopilot coupled approach NA below 530. When Circling to Rwy 27 at night, operational VGSI required, remain on or above VGSI glidepath until threshold. For inop ALS, increase S-ILS 9 all Cats visibility to 2½ SM. Rwy 9 helicopter visibility reduction below RVR 4000 NA. #Inop table does not apply to S-ILS 9.

MALS R


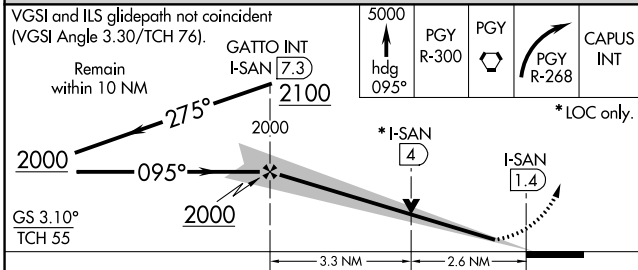
MISSED APPROACH: Climb to 5000 on heading 095° and on PGY VORTAC R-300 to PGY VORTAC, then right turn on PGY VORTAC R-268 to CAPUS INT/23.4 DME and hold. #Missed approach requires minimum climb of 270 feet per NM to 4000.

D-ATIS 134.8	SOCAL APP CON 119.6 363.1 (WEST) 124.35 279.625 (EAST)	LINDBERGH TOWER 118.3 338.225	GND CON 123.9	CLNC DEL 125.9	CPDLC
------------------------	--	--	-------------------------	--------------------------	-------

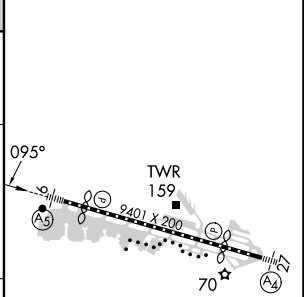


SW-3, 13 JUN 2024 to 11 JUL 2024

SW-3, 13 JUN 2024 to 11 JUL 2024



ELEV 17	D TDZE 17
---------	------------------



CATEGORY	A	B	C	D
S-ILS 9#	258/40 241 (300-¾)			
S-ILS 9	751-2 734 (800-2)			
S-LOC 9	960/40 943 (1000-¾)	960-2 943 (1000-2)		
C CIRCLING	960-1¼ 943 (1000-1¼)	960-2¾ 943 (1000-2¾)	960-3 943 (1000-3)	

TDZ/CL Rwys 9 and 27 HIRL Rwy 9-27					
FAF to MAP 5.9 NM					
Knots	60	90	120	150	180
Min:Sec	5:54	3:56	2:57	2:22	1:58