

(ZZ0003.ZZ000) 22195

# ZZ000 THREE DEPARTURE (RNAV) AL-373 (FAA)

SAN DIEGO INTL (SAN)  
SAN DIEGO, CALIFORNIA

SW-3, 13 JUN 2024 to 11 JUL 2024

**DEPARTURE ROUTE DESCRIPTION**

**TAKEOFF RUNWAY 27:** Climb direct JETI, then left turn direct to cross ZZ000 between 6000 and FL230 at or below 230K, thence . . . .

. . . . on (transition). Turbojets maintain FL230, turboprops maintain 15000, expect filed altitude 10 minutes after departure.

CENZA TRANSITION (ZZ0003.CENZA)

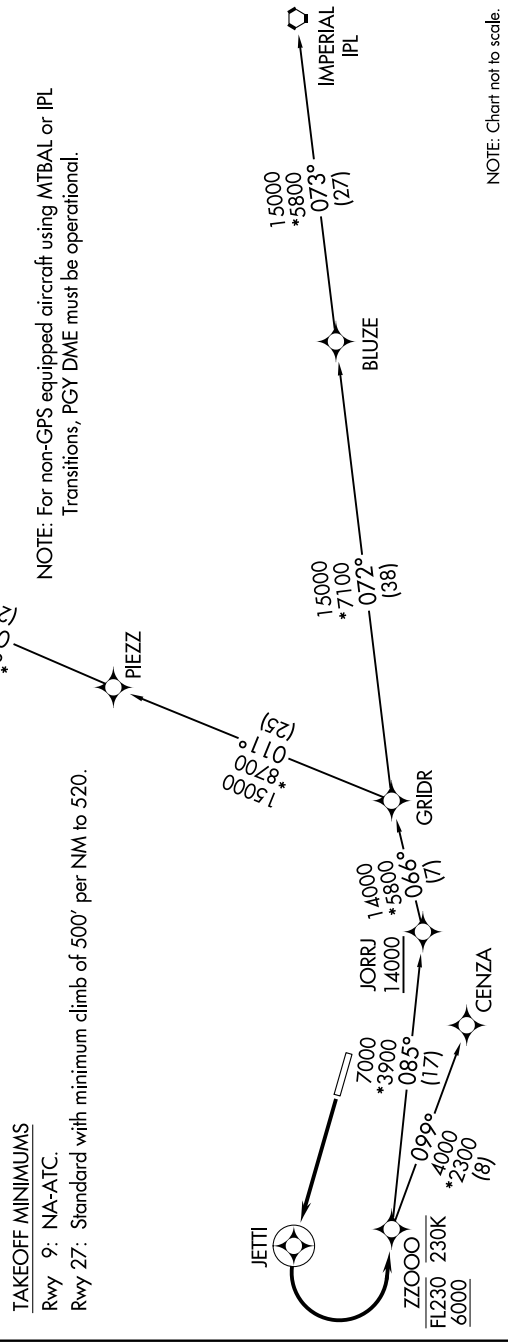
IMPERIAL TRANSITION (ZZ0003.IPL)

MTBAL TRANSITION (ZZ0003.MTBAL)

**TOP ALTITUDE:**  
JETS FL230/  
TURBOPROPS 15000

RNAV 1 - DME/DME/IRU or GPS.  
RADAR required for non-GPS equipped aircraft.

D-ATIS 134.8  
CLINC.DEL 123.9  
CPDIC 123.9  
GND CON 123.9  
LINDBERGH TOWER 118.3 338.225  
SOCAL.DEP CON 125.15 317.55



ZZ000 THREE DEPARTURE (RNAV)  
(ZZ0003.ZZ000) 14JUL22

SAN DIEGO, CALIFORNIA  
SAN DIEGO INTL (SAN)

SW-3, 13 JUN 2024 to 11 JUL 2024