

# TACAN RWY 29

TACAN NZY Chan <b>117</b>	APCH CRS <b>299°</b>	Rwy Ldg TDZE <b>26</b> Arprt Elev <b>26</b>
------------------------------	-------------------------	--

AL-374 [USN]

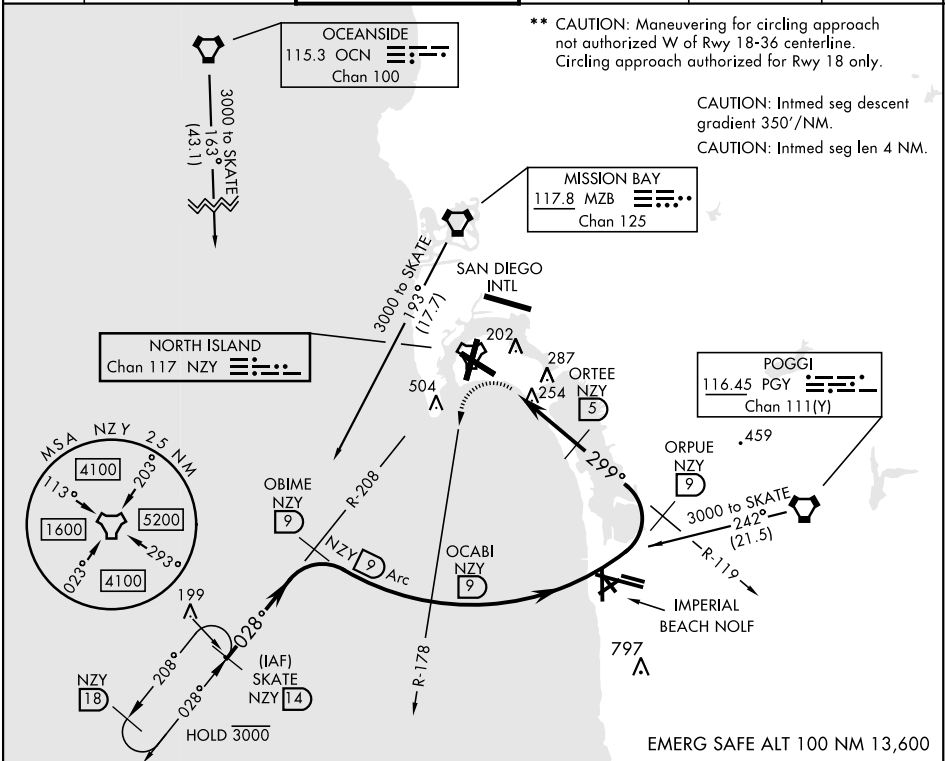
NORTH ISLAND NAS (HALSEY FIELD) (KNZY)

▼ \* When ALS inop, increase CAT AB vis to 1 mile, CAT CD vis to 1½ mile.



MISSED APPROACH: Climbing left turn to 2000 via NZY TACAN R-178 to OCABI. Arc S on NZY 9 DME arc to OBIME, then via NZY R-208 to SKATE and hold.

ATIS ★ <b>317.8</b>	SOCAL APP CON <b>125.15 317.55</b>	TOWER ★ <b>135.1 336.4</b>	GND CON <b>118.0 360.675</b>	CLNC DEL <b>128.4 288.25</b>	PAR/ASR
------------------------	---------------------------------------	-------------------------------	---------------------------------	---------------------------------	---------

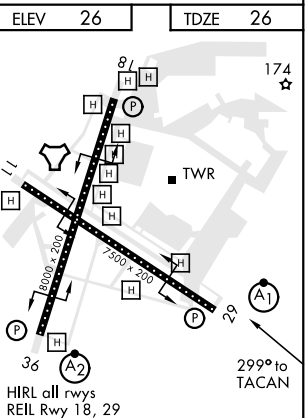
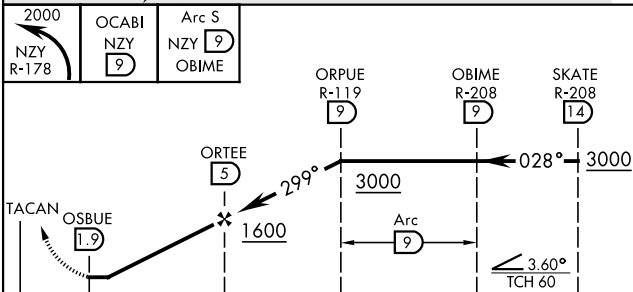


\*\* CAUTION: Maneuvering for circling approach not authorized W of Rwy 18-36 centerline. Circling approach authorized for Rwy 18 only.

CAUTION: Intmed seg descent gradient 350°/NM.

CAUTION: Intmed seg len 4 NM.

EMERG SAFE ALT 100 NM 13,600



CATEGORY	A		B		C		D	
S-29 *	540-¾	514 (600-¾)	540-1	514 (600-1)				
CIRCLING **	620-1	594 (600-1)	NOT AUTHORIZED					

# TACAN RWY 29

SW-3, 13 JUN 2024 to 11 JUL 2024

SW-3, 13 JUN 2024 to 11 JUL 2024