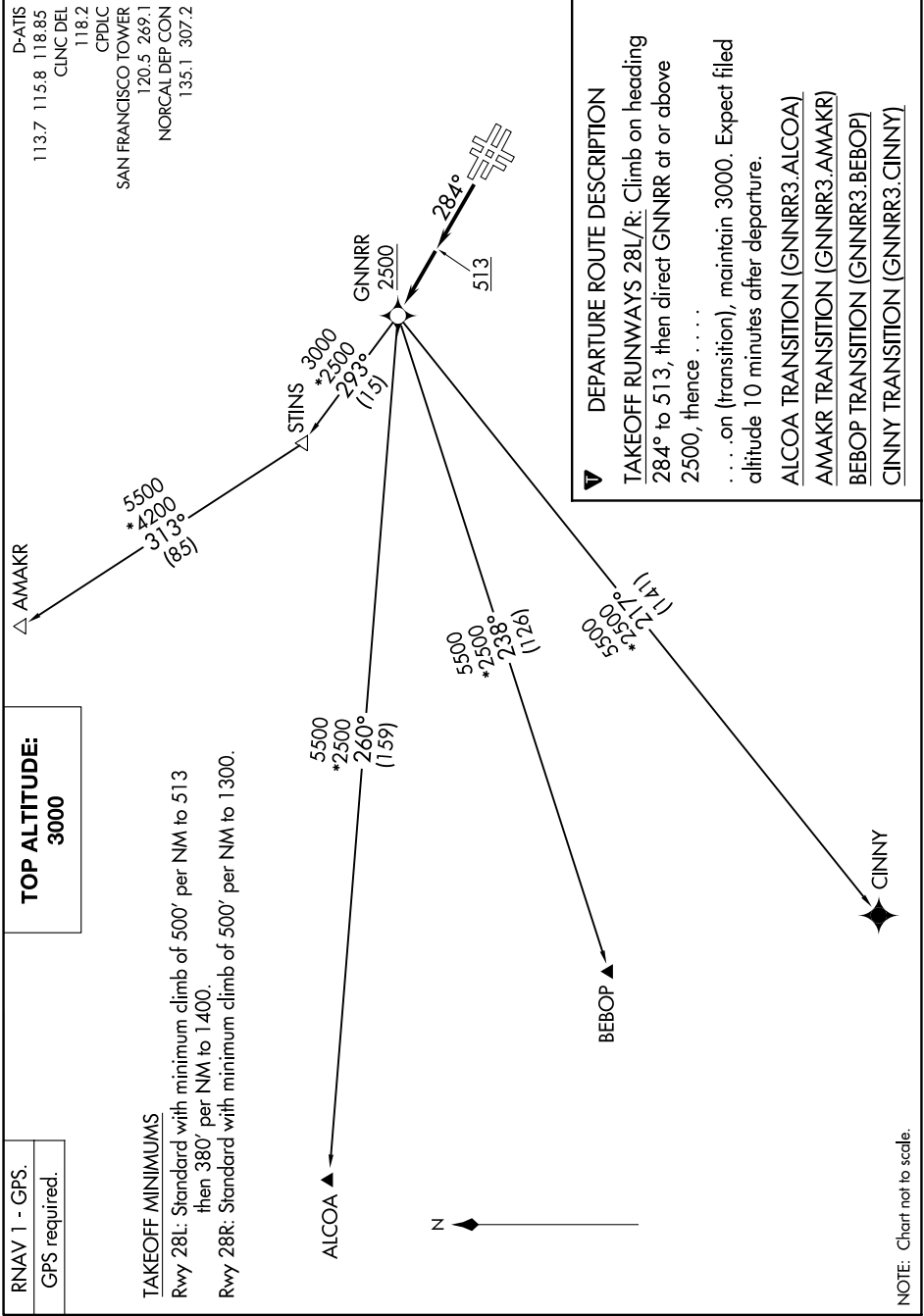


# GNNRR THREE DEPARTURE (RNAV)

AL-375 (FAA)

SAN FRANCISCO INTL (SFO)  
SAN FRANCISCO, CALIFORNIA

SW-2, 13 JUN 2024 to 11 JUL 2024



RNAV 1 - GPS.  
GPS required.

**TOP ALTITUDE:**  
**3000**

### TAKEOFF MINIMUMS

Rwy 28L: Standard with minimum climb of 500' per NM to 513 then 380' per NM to 1400.

Rwy 28R: Standard with minimum climb of 500' per NM to 1300.

### DEPARTURE ROUTE DESCRIPTION

**TAKEOFF RUNWAYS 28L/R:** Climb on heading 284° to 513, then direct GNNRR at or above 2500, thence . . . .

. . . . on (transition), maintain 3000. Expect filed altitude 10 minutes after departure.

- ALCOA TRANSITION (GNNRR3.ALCOA)
- AMAKR TRANSITION (GNNRR3.AMAKR)
- BEBOP TRANSITION (GNNRR3.BEBOP)
- CINNY TRANSITION (GNNRR3.CINNY)

NOTE: Chart not to scale.

SW-2, 13 JUN 2024 to 11 JUL 2024

# GNNRR THREE DEPARTURE (RNAV)