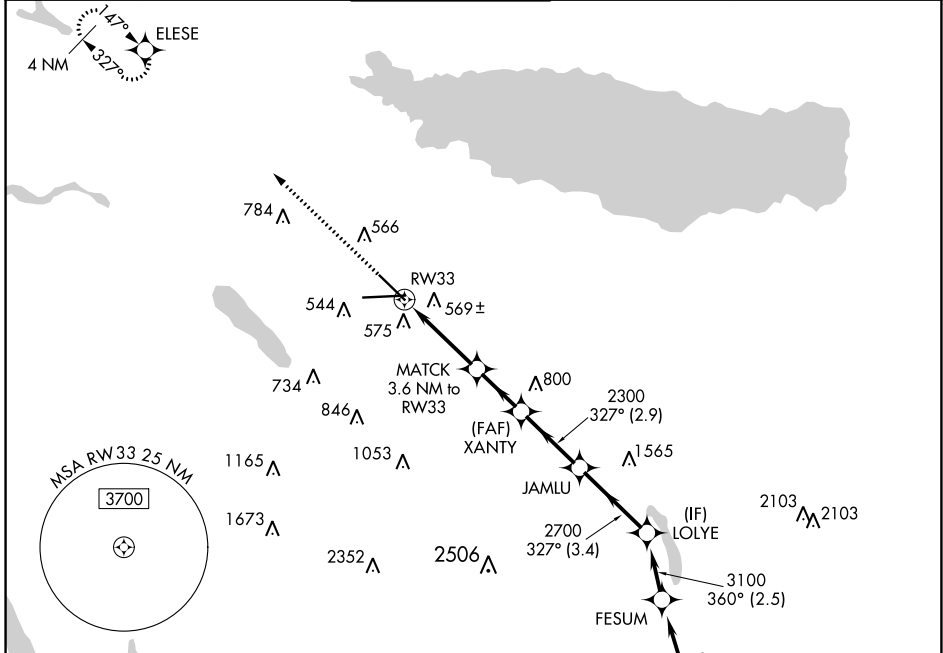


WAAS CH 81823 W33A	APP CRS 327°	Rwy Idg TDZE Apt Elev	7500 409 421
--	------------------------	-----------------------------	---

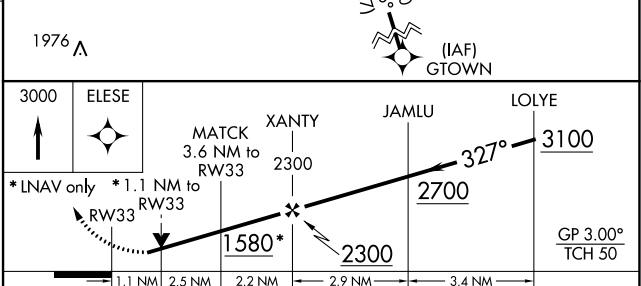
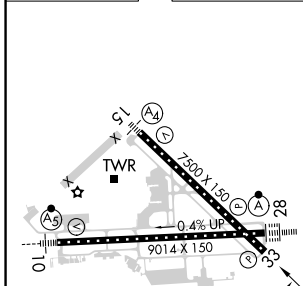
RNAV (GPS) RWY 33

SYRACUSE HANCOCK INTL (SYR)

RNP APCH.		SYRACUSE TOWER 120.3 239.0		GND CON 121.7 348.6	CLNC DEL 125.05 257.775
⚠ Rwy 33 helicopter visibility reduction below 3/4 SM NA. For uncompensated ⚠ Baro-VNAV systems, LNAV/VNAV NA below -20°C or above 54°C.				MISSED APPROACH: Climb to 3000 direct ELESE and hold.	
ATIS 124.225	SYRACUSE APP CON 126.125 269.125	SYRACUSE TOWER 120.3 239.0		GND CON 121.7 348.6	CLNC DEL 125.05 257.775



ELEV 421	D	TDZE 409
----------	----------	----------



CATEGORY	A	B	C	D
LPV DA		715/45	306 (300-7/8)	
LNAV/VNAV DA		882-1 3/8	473 (500-1 3/8)	
LNAV MDA	820/55	411 (400-1)	820/60	411 (400-1 1/4)
<input checked="" type="checkbox"/> CIRCLING	900-1 479 (500-1)	920-1 499 (500-1)	1020-1 1/2 599 (600-1 1/2)	1180-2 1/2 759 (800-2 1/2)

NE-2, 13 JUN 2024 to 11 JUL 2024

NE-2, 13 JUN 2024 to 11 JUL 2024