

FORT LEWIS, WASHINGTON

# ILS or LOC RWY 15

LOC I-GRF <b>108.3</b> Chan 20	APCH CRS <b>151°</b>	Rwy Idg TDZE Arpt Elev <b>6124</b> <b>300</b> <b>301</b>	AL-413 [USA] GRAY AAF (JOINT BASE LEWIS MCCHORD) (KGRF)
--------------------------------------	-------------------------	---	---

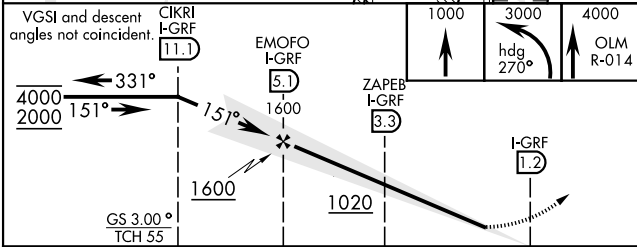
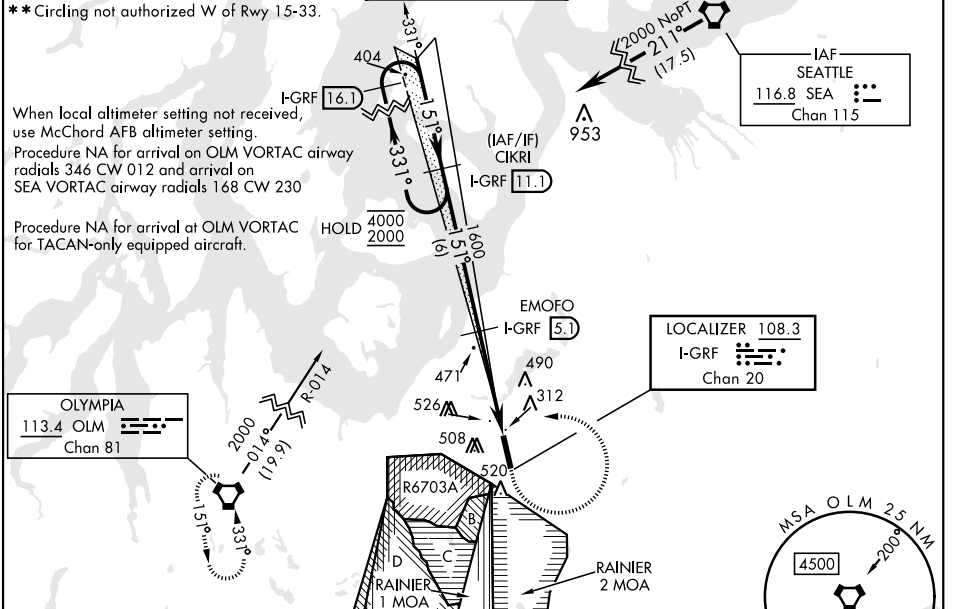
RNAV1 - GPS from SEA VORTAC.

DME required for civil use. For non-RNAV aircraft, RADAR required from SEA VORTAC.

⚠️ \* When ALS inop when using McChord AFB altimeter setting, increase LOC CAT C/D vis to RVR 55.

SSALR A3 MISSED APPROACH: Climb to 1000, then climbing left turn to 3000 on hdg 270° and OLM VORTAC R-014, then continue climb to 4000 on OLM R-014 to OLM and hold.

ATIS <b>124.65 306.2</b>	SEATTLE APP CON <b>120.1 290.9</b>	TOWER ★ <b>119.325</b> (CTAF) <b>256.8</b>	GND CON <b>121.9 290.2</b>	CLNC DEL <b>121.9 290.2</b>	PAR
-----------------------------	---------------------------------------	---	-------------------------------	--------------------------------	-----



CATEGORY	A	B	C	D
S-ILS 15	500/24		200	(200-½)
S-LOC 15	640/24	340 (400-½)	640/26	340 (400-½)
CIRCLING **	840-1	539 (600-1)	840-1½ 539 (600-1½)	920-2 619 (700-2)
McCHORD FLD ALTIMETER SETTING MINIMUMS				
S-ILS 15	516/24		216	(300-½)
S-LOC 15*	660/24	360 (400-½)	660/35	360 (400-¾)
CIRCLING **	860-1	559 (600-1)	860-1½ 559 (600-1½)	940-2 639 (700-2)

ELEV	301	TDZE	300
------	-----	------	-----

151° 4 NM from FAF

HIRL Rwy 15-33

FAF to MAP 4.0 NM

Knots	60	90	120	150	180
Min:Sec	4:00	2:40	2:00	1:36	1:20

NW-1, 13 JUN 2024 to 11 JUL 2024

NW-1, 13 JUN 2024 to 11 JUL 2024

# ILS or LOC RWY 15