

FORT LEWIS, WASHINGTON

# RNAV (GPS) RWY 33

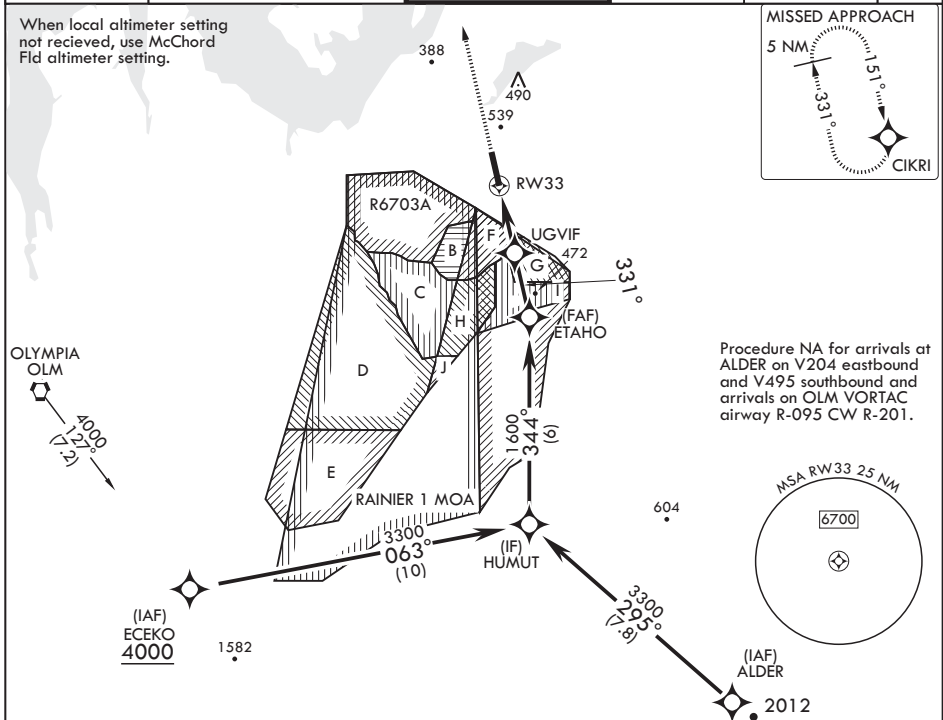
APCH CRS	Rwy Idg	6124
331°	TDZE	301
	Arprt Elev	301

AL-413 (USA)

GRAY AAF (JOINT BASE LEWIS MCCHORD) (KGRF)

RNP APCH	SSALR	MISSED APPROACH: Climb to 2000 direct CIKRI and hold.
*Circling not authorized W of Rwy 15-33.		

ATIS	SEATTLE APP CON/DEP CON	TOWER *	GND CON	CLNC DEL	PAR
124.65 306.2	120.1 290.9	119.325 (CTAF) 256.8	121.9 290.2	121.9 290.2	

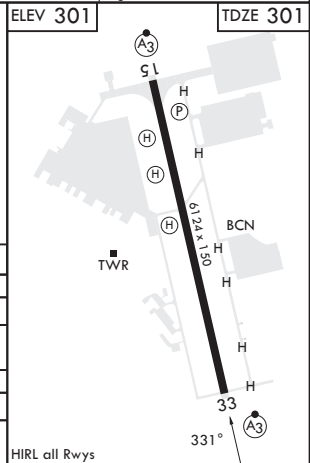
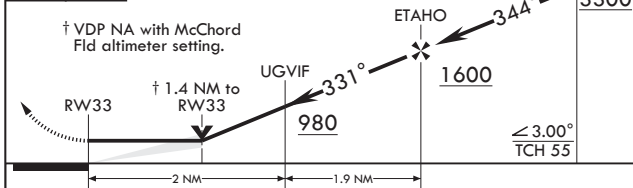


Procedure NA for arrivals at ALDER on V204 eastbound and arrivals on OLM VORTAC and arrivals on OLM VORTAC airway R-095 CW R-201.

NW-1, 13 JUN 2024 to 11 JUL 2024

NW-1, 13 JUN 2024 to 11 JUL 2024

2000	CIKRI	ELEV 301	TDZE 301
------	-------	----------	----------



CATEGORY	A	B	C	D
LNAV MDA	800-½ 499	(500-½)	800-1 499	(500-1)
CIRCLING*	840-1 539	(600-1)	840-1½ 539	(600-1½) 920-2 619 (700-2)
MC CHORD FLD ALTIMETER SETTING MINIMUMS				
LNAV MDA	820-½ 519	(600-½)	820-1 519	(600-1)
CIRCLING*	860-1 559	(600-1)	860-1½ 559	(600-1½) 940-2 639 (700-2)

FORT LEWIS, WASHINGTON

47°05'N - 122°35'W GRAY AAF (JOINT BASE LEWIS MCCHORD) (KGRF)

Amdt 3 10AUG23

# RNAV (GPS) RWY 33