

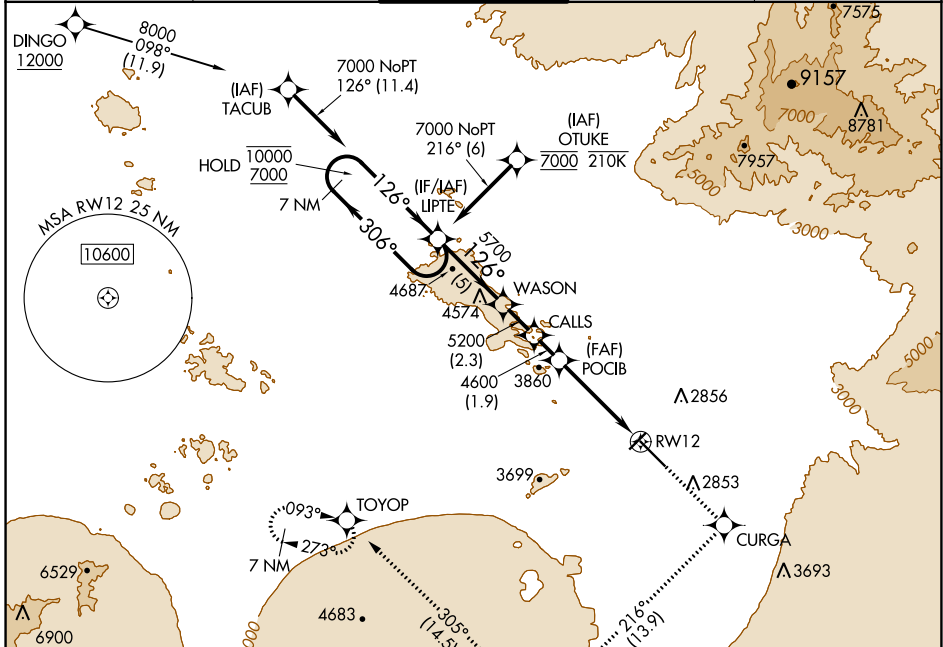
WAAS CH 93545 W12A	APP CRS 126°	Rwy Idg 10996 TDZE 2599 Apt Elev 2643
--	------------------------	--

RNAV (GPS) Z RWY 12

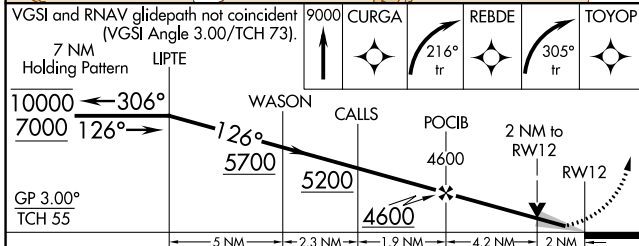
TUCSON INTL (TUS)

RNP APCH - GPS.	MALSR	MISSED APPROACH: Climb to 9000 direct CURGA and climbing right turn on 216° track to REBDE and climbing right turn on 305° track to TOYOP and hold, continue climb-in-hold to 9000.
<p>⚠ For uncompensated Baro-VNAV systems, LNAV/VNAV NA below -2°C or above 54°C. For inop ALS, increase LNAV/VNAV all Cats visibility to RVR 4500, and increase LNAV Cats C/D visibility to 2 SM.</p>		

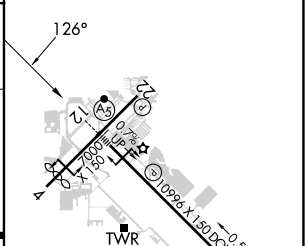
ATIS 123.8 279.65	TUCSON APP CON 119.4 318.1	TUCSON TOWER 118.3 257.8	GND CON 120.025 348.6	CLNC DEL 126.65 326.2
-----------------------------	--------------------------------------	------------------------------------	---------------------------------	---------------------------------



VGSI and RNAV glidepath not coincident (VGSI Angle 3.00/TCH 73).
 7 NM Holding Pattern LIPTES



ELEV 2643	TDZE 2599
-----------	-----------



CATEGORY	A	B	C	D
LPV DA		2799/24	200 (200-½)	
LNAV/VNAV DA		2905/24	306 (300-½)	
LNAV MDA	3300/24	701 (700-½)	3300-1½	701 (700-1½)
CIRCLING	3300-1	657 (700-1)	3300-2	3640-3
			657 (700-2)	997 (1000-3)

HIRL Rwy 12-30
 MIRL Rwy 4-22
 REIL Rwy 22 and 30

SW-4, 13 JUN 2024 to 11 JUL 2024

SW-4, 13 JUN 2024 to 11 JUL 2024