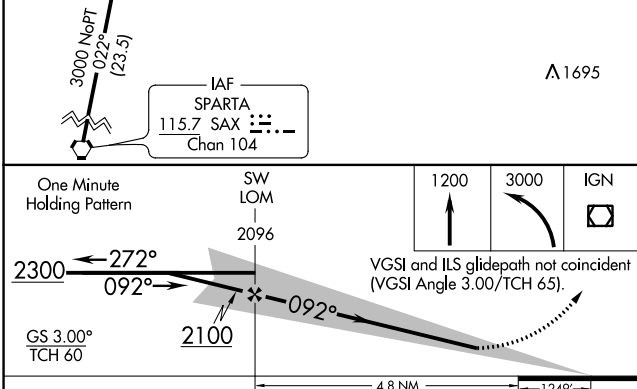
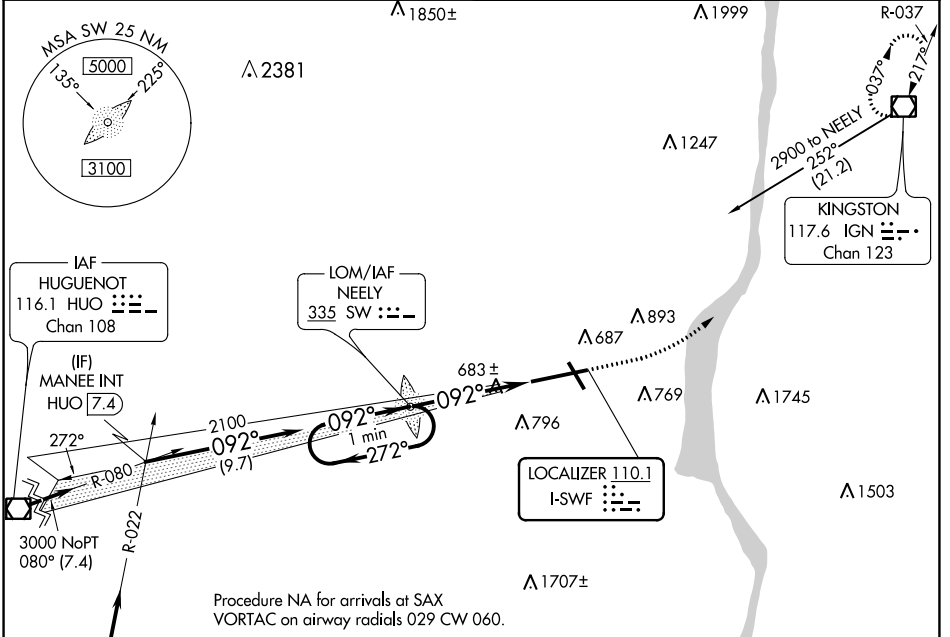


LOC I-SWF <b>110.1</b>	APP CRS <b>092°</b>	Rwy Idg <b>8817</b>
		TDZE <b>482</b>
		Apt Elev <b>491</b>

**ILS RWY 9 (SA CAT I)**  
NEW YORK STEWART INTL (SWF)

Requires specific OPSPEC, MSPEC, or LOA approval and use of HUD to DH.	ALSIF-2	MISSED APPROACH: Climb to 1200 then climbing left turn to 3000 direct IGN VOR/DME and hold.

ATIS <b>124.575</b>	NEW YORK APP CON <b>132.75 363.1</b>	STEWART TOWER <b>121.0 254.4</b>	GND CON <b>121.9</b>
------------------------	---	-------------------------------------	-------------------------



ELEV 491	<b>D</b>	TDZE 482
----------	----------	----------

TWR 593

1817 X 150

0.45° DOWN

CATEGORY	A	B	C	D
S-ILS 9		RA 142/14	150	DA 632

**SA CATEGORY I ILS - SPECIAL AIRCREW & AIRCRAFT CERTIFICATION REQUIRED**

TDZ/CL Rwy 9  
HIRL Rwys 9-27 and 16-34  
REIL Rwys 16, 27 and 34

NE-2, 13 JUN 2024 to 11 JUL 2024

NE-2, 13 JUN 2024 to 11 JUL 2024