

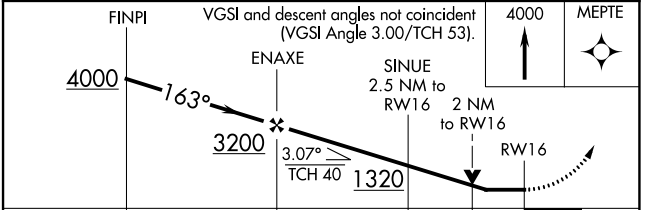
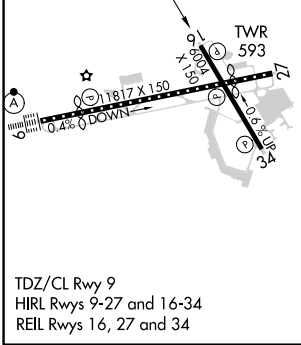
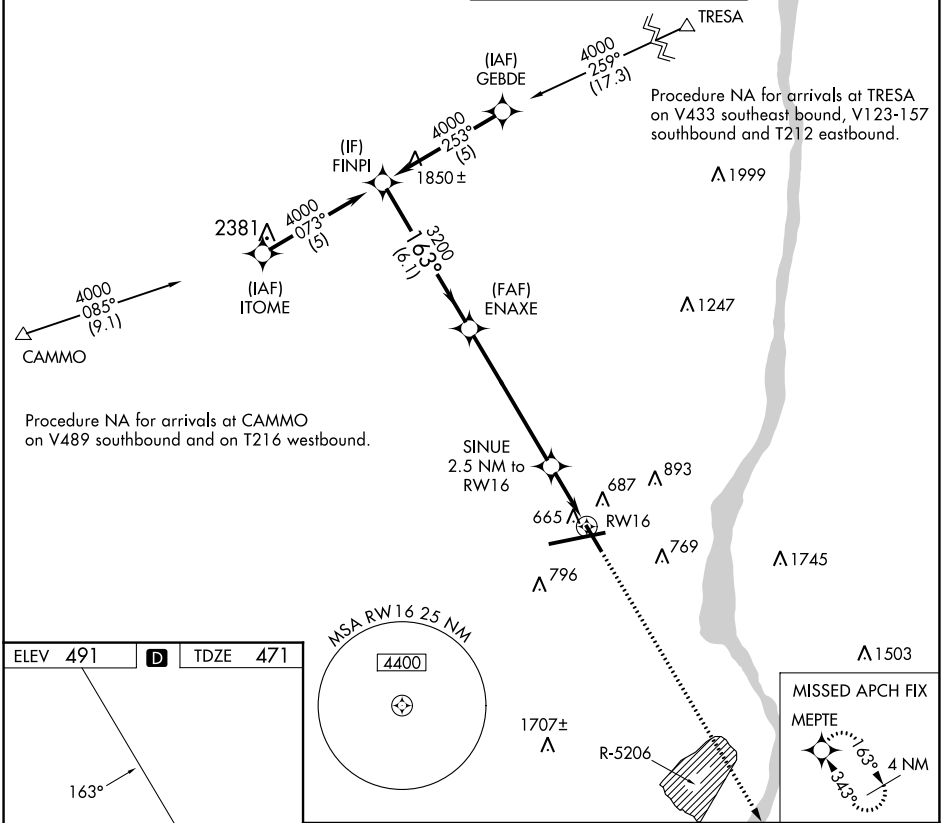
APP CRS	Rwy Idg	<b>6004</b>
<b>163°</b>	TDZE	<b>471</b>
	Apt Elev	<b>491</b>

# RNAV (GPS) RWY 16

NEW YORK STEWART INTL (SWF)

RNP APCH-GPS.	MISSED APPROACH: Climb to 4000 direct MEPTE and hold, continue climb-in-hold to 4000.
<p>▼ Rwy 16 helicopter visibility reduction below 3/4 SM NA.</p> <p>▲ Procedure NA when restricted area R-5206 is active.</p>	

ATIS <b>124.575</b>	NEW YORK APP CON <b>132.75 363.1</b>	STEWART TOWER <b>121.0 254.4</b>	GND CON <b>121.9</b>
------------------------	---	-------------------------------------	-------------------------



CATEGORY	A	B	C	D
LNAV MDA	1140-1	669 (700-1)	1140-1 7/8	669 (700-1 7/8)
<input checked="" type="checkbox"/> CIRCLING	1200-1	709 (800-1)	1200-2 709 (800-2)	1200-2 1/4 709 (800-2 1/4)

NE-2, 13 JUN 2024 to 11 JUL 2024

NE-2, 13 JUN 2024 to 11 JUL 2024