

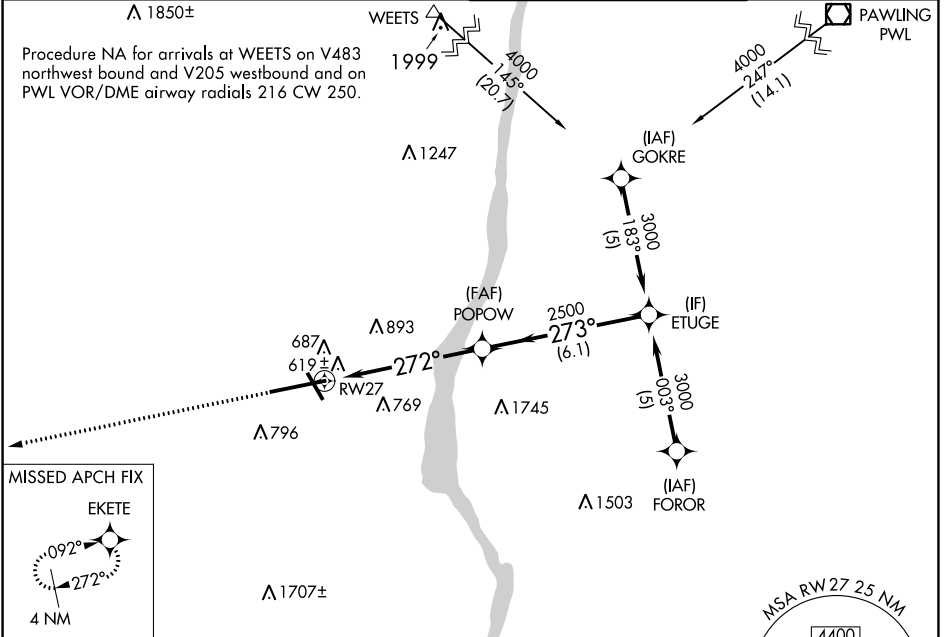
APP CRS	Rwy Idg	9817
272°	TDZE	469
	App Elev	491

RNAV (GPS) RWY 27

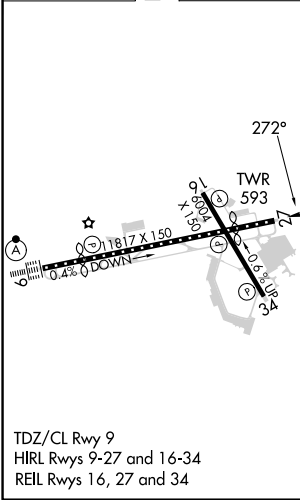
NEW YORK STEWART INTL (SWF)

RNP APCH.	For uncompensated Baro-VNAV systems, LNAV/VNAV NA below -15°C or above 54°C.	MISSED APPROACH: Climb to 3000 direct EKETE and hold.
-----------	--	---

ATIS 124.575	NEW YORK APP CON 132.75 363.1	STEWART TOWER 121.0 254.4	GND CON 121.9
------------------------	---	-------------------------------------	-------------------------



ELEV	491	D	TDZE	469
------	------------	----------	------	------------



3000	EKETE	POPOW	ETUGE	Procedure Turn NA
↑	✧	✧	✧	
* LNAV only.	* 1.5 NM to RW27	2500	273°	3000
		2500	272°	2500
				GP 3.00° TCH 55
	1.5 NM	4.6 NM	6.1 NM	
CATEGORY	A	B	C	D
LNAV/DA/VNAV	1048-2		579 (600-2)	
LNAV MDA	1000-1	531 (600-1)	1000-1½ 531 (600-1½)	1000-1¾ 531 (600-1¾)
C CIRCLING	1200-1	709 (800-1)	1200-2 709 (800-2)	1200-2½ 709 (800-2½)

NE-2, 13 JUN 2024 to 11 JUL 2024

NE-2, 13 JUN 2024 to 11 JUL 2024